

PLCG1 (Ab-771) Antibody
Purified Rabbit Polyclonal Antibody (Pab)
Catalog # AP50025**Specification**

PLCG1 (Ab-771) Antibody - Product Information

Application	WB, IHC
Primary Accession	P19174
Reactivity	Human, Mouse, Rat
Host	Rabbit
Clonality	Polyclonal
Calculated MW	149 KDa
Antigen Region	756-787

PLCG1 (Ab-771) Antibody - Additional Information**Gene ID** 5335**Other Names**

1-phosphatidylinositol 4, 5-bisphosphate phosphodiesterase gamma-1, PLC-148, Phosphoinositide phospholipase C-gamma-1, Phospholipase C-II, PLC-II, Phospholipase C-gamma-1, PLC-gamma-1, PLCG1, PLC1

Dilution

WB~~ 1:1000

IHC~~1:50-1:100

Format

Rabbit IgG in phosphate buffered saline (without Mg²⁺ and Ca²⁺), pH 7.4, 150mM NaCl, 0.09% (W/V) sodium azide and 50% glycerol.

Storage Conditions

-20°C

PLCG1 (Ab-771) Antibody - Protein Information**Name** PLCG1 ([HGNC:9065](#))**Synonyms** PLC1**Function**

Mediates the production of the second messenger molecules diacylglycerol (DAG) and inositol 1,4,5-trisphosphate (IP3). Plays an important role in the regulation of intracellular signaling cascades. Becomes activated in response to ligand-mediated activation of receptor-type tyrosine kinases, such as PDGFRA, PDGFRB, EGFR, FGFR1, FGFR2, FGFR3 and FGFR4 (By similarity). Plays a role in actin reorganization and cell migration (PubMed:17229814). Guanine nucleotide exchange factor that binds the GTPase DNMT1 and catalyzes the dissociation of GDP,

allowing a GTP molecule to bind in its place, therefore enhancing DNM1-dependent endocytosis (By similarity).

Cellular Location

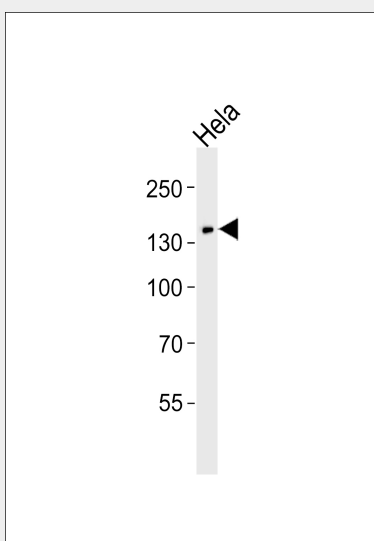
Cell projection, lamellipodium. Cell projection, ruffle. Note= Rapidly redistributed to ruffles and lamellipodia structures in response to epidermal growth factor (EGF) treatment.

PLCG1 (Ab-771) Antibody - Protocols

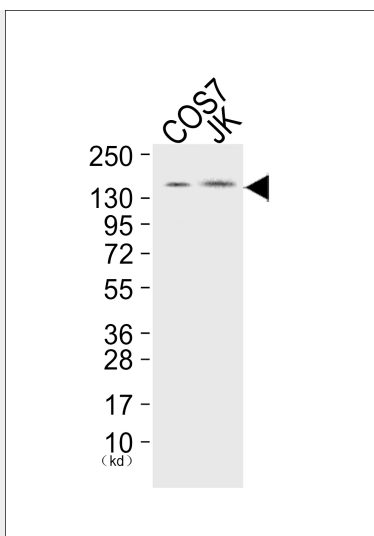
Provided below are standard protocols that you may find useful for product applications.

- [Western Blot](#)
- [Blocking Peptides](#)
- [Dot Blot](#)
- [Immunohistochemistry](#)
- [Immunofluorescence](#)
- [Immunoprecipitation](#)
- [Flow Cytometry](#)
- [Cell Culture](#)

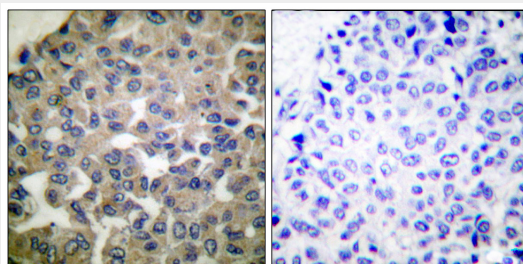
PLCG1 (Ab-771) Antibody - Images



Western blot analysis of lysates from HeLa cell line ,using PLCG1 (Ab-771) Antibody(B0079). B0079 was diluted at 1:1000. A goat anti-rabbit IgG H&L(HRP) at 1:5000 dilution was used as the secondary antibody.Lysates at 35ug.



Western blot analysis of extracts from COS7 cells (Lane 1), and JK cells (Lane 2), using PLCG1 (Ab-771) Antibody. The lane on the left is treated with synthesized peptide.



Immunohistochemical analysis of paraffin-embedded human breast carcinoma tissue using PLCG1 (Ab-771) antibody .

PLCG1 (Ab-771) Antibody - Background

Mediates the production of the second messenger molecules diacylglycerol (DAG) and inositol 1,4,5-trisphosphate (IP3). Plays an important role in the regulation of intracellular signaling cascades. Becomes activated in response to ligand- mediated activation of receptor-type tyrosine kinases, such as PDGFRA, PDGFRB, FGFR1, FGFR2, FGFR3 and FGFR4. Plays a role in actin reorganization and cell migration.

PLCG1 (Ab-771) Antibody - References

Burgess W.H.,et al.Mol. Cell. Biol. 10:4770-4777(1990).
Deloukas P.,et al.Nature 414:865-871(2001).
Mural R.J.,et al.Submitted (SEP-2005) to the EMBL/GenBank/DDBJ databases.
Mohammadi M.,et al.Mol. Cell. Biol. 11:5068-5078(1991).
Park D.J.,et al.J. Biol. Chem. 267:1496-1501(1992).