

KAPO Antibody
Purified Rabbit Polyclonal Antibody (Pab)
Catalog # AP50027**Specification**

KAPO Antibody - Product Information

Application	WB
Primary Accession	P10644
Reactivity	Human, Mouse, Rat
Host	Rabbit
Clonality	Polyclonal
Calculated MW	43 KDa
Antigen Region	288-317

KAPO Antibody - Additional Information**Gene ID** 5573**Other Names**

cAMP-dependent protein kinase type I-alpha regulatory subunit, Tissue-specific extinguisher 1, TSE1, cAMP-dependent protein kinase type I-alpha regulatory subunit, N-terminally processed, PRKAR1A, PKR1, PRKAR1, TSE1

Dilution

WB~~ 1:1000

Format

Rabbit IgG in phosphate buffered saline (without Mg²⁺ and Ca²⁺), pH 7.4, 150mM NaCl, 0.09% (W/V) sodium azide and 50% glycerol.

Storage Conditions

-20°C

KAPO Antibody - Protein Information**Name** PRKAR1A**Synonyms** PKR1, PRKAR1, TSE1**Function**

Regulatory subunit of the cAMP-dependent protein kinases involved in cAMP signaling in cells.

Cellular Location

Cell membrane.

Tissue Location

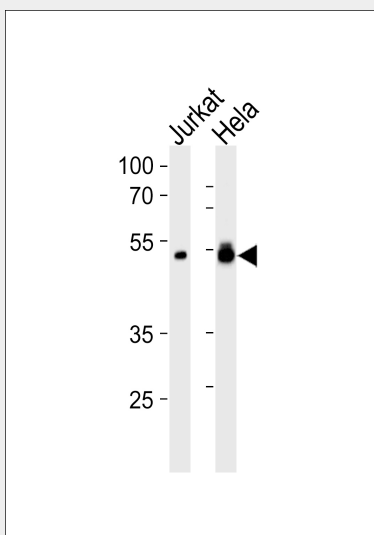
Four types of regulatory chains are found: I-alpha, I-beta, II-alpha, and II-beta. Their expression varies among tissues and is in some cases constitutive and in others inducible

KAPO Antibody - Protocols

Provided below are standard protocols that you may find useful for product applications.

- [Western Blot](#)
- [Blocking Peptides](#)
- [Dot Blot](#)
- [Immunohistochemistry](#)
- [Immunofluorescence](#)
- [Immunoprecipitation](#)
- [Flow Cytometry](#)
- [Cell Culture](#)

KAPO Antibody - Images



Western blot analysis of lysates from Jurkat, HeLa cell line (from left to right), using KAPO Antibody (C10337). C10337 was diluted at 1:1000 at each lane. A goat anti-rabbit IgG H&L (HRP) at 1:5000 dilution was used as the secondary antibody. Lysates at 35 µg per lane.

KAPO Antibody - Background

Regulatory subunit of the cAMP-dependent protein kinases involved in cAMP signaling in cells.

KAPO Antibody - References

- Sandberg M., et al. *Biochem. Biophys. Res. Commun.* 149:939-945(1987).
Sandberg M., et al. *Biochem. Biophys. Res. Commun.* 167:323-330(1990).
Jones K.W., et al. *Cell* 66:861-872(1991).
Solberg R., et al. *Endocrinology* 138:169-181(1997).
Gevaert K., et al. *Nat. Biotechnol.* 21:566-569(2003).