

**TCTP Antibody**  
**Purified Rabbit Polyclonal Antibody (Pab)**  
**Catalog # AP50028**

**Specification**

---

**TCTP Antibody - Product Information**

Application	WB, IHC
Primary Accession	<a href="#">P13693</a>
Reactivity	Human, Mouse, Rat
Host	Rabbit
Clonality	Polyclonal
Calculated MW	20,16 KDa
Antigen Region	85-115

**TCTP Antibody - Additional Information**

**Gene ID** 7178

**Other Names**

Translationally-controlled tumor protein, TCTP, Fortilin, Histamine-releasing factor, HRF, p23, TPT1

**Dilution**

WB~~ 1:1000

IHC~~1:50-1:100

**Format**

Rabbit IgG in phosphate buffered saline (without Mg<sup>2+</sup> and Ca<sup>2+</sup>), pH 7.4, 150mM NaCl, 0.09% (W/V) sodium azide and 50% glycerol.

**Storage Conditions**

-20°C

**TCTP Antibody - Protein Information**

**Name** TPT1

**Function**

Involved in calcium binding and microtubule stabilization (PubMed:<a href="http://www.uniprot.org/citations/12167714" target="\_blank">12167714</a>, PubMed:<a href="http://www.uniprot.org/citations/15162379" target="\_blank">15162379</a>, PubMed:<a href="http://www.uniprot.org/citations/15958728" target="\_blank">15958728</a>). Acts as a negative regulator of TSC22D1-mediated apoptosis, via interaction with and destabilization of TSC22D1 protein (PubMed:<a href="http://www.uniprot.org/citations/18325344" target="\_blank">18325344</a>).

**Cellular Location**

Cytoplasm.

### Tissue Location

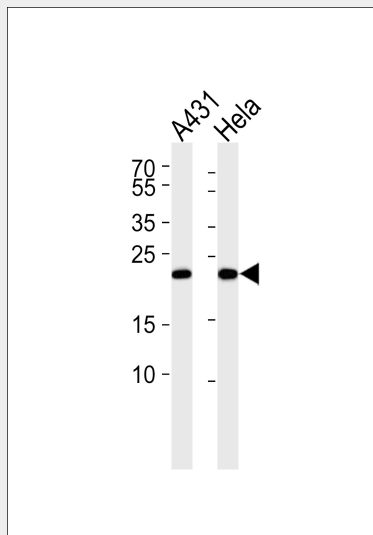
Found in several healthy and tumoral cells including erythrocytes, hepatocytes, macrophages, platelets, keratinocytes, erythroleukemia cells, gliomas, melanomas, hepatoblastomas, and lymphomas. It cannot be detected in kidney and renal cell carcinoma (RCC). Expressed in placenta and prostate

### TCTP Antibody - Protocols

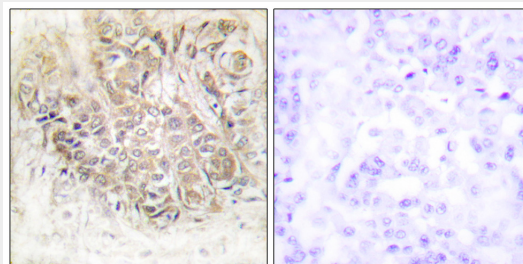
Provided below are standard protocols that you may find useful for product applications.

- [Western Blot](#)
- [Blocking Peptides](#)
- [Dot Blot](#)
- [Immunohistochemistry](#)
- [Immunofluorescence](#)
- [Immunoprecipitation](#)
- [Flow Cytometry](#)
- [Cell Culture](#)

### TCTP Antibody - Images



Western blot analysis of lysates from A431, HeLa cell line (from left to right), using TCTP Antibody (C10362). C10362 was diluted at 1:1000 at each lane. A goat anti-rabbit IgG H&L (HRP) at 1:5000 dilution was used as the secondary antibody. Lysates at 35 µg per lane.



Immunohistochemistry analysis of paraffin-embedded human breast carcinoma tissue using TCTP antibody.

**TCTP Antibody - Background**

Involved in calcium binding and microtubule stabilization.

**TCTP Antibody - References**

Gross B.,et al.Nucleic Acids Res. 17:8367-8367(1989).  
Thiele H.,et al.Thesis (2000), Humboldt-University Berlin, Germany.  
Gnanasekar M.,et al.Submitted (JUL-2003) to the EMBL/GenBank/DDBJ databases.  
Gao T.H.,et al.Submitted (JUN-2002) to the EMBL/GenBank/DDBJ databases.  
Ebert L.,et al.Submitted (JUN-2004) to the EMBL/GenBank/DDBJ databases.