

P2RY13 Antibody
Purified Rabbit Polyclonal Antibody (Pab)
Catalog # AP50032

Specification

P2RY13 Antibody - Product Information

Application	WB
Primary Accession	O9BPV8
Reactivity	Human, Rat
Host	Rabbit
Clonality	Polyclonal
Calculated MW	41,38 KDa
Antigen Region	215-243

P2RY13 Antibody - Additional Information

Gene ID 53829

Other Names

P2Y purinoceptor 13, P2Y13, G-protein coupled receptor 86, G-protein coupled receptor 94, P2RY13, GPR86, GPR94

Dilution

WB~~ 1:1000

Format

Rabbit IgG in phosphate buffered saline (without Mg²⁺ and Ca²⁺), pH 7.4, 150mM NaCl, 0.09% (W/V) sodium azide and 50% glycerol.

Storage Conditions

-20°C

P2RY13 Antibody - Protein Information

Name P2RY13

Synonyms GPR86, GPR94

Function

Receptor for ADP. Coupled to G(i)-proteins. May play a role in hematopoiesis and the immune system.

Cellular Location

Cell membrane; Multi-pass membrane protein.

Tissue Location

Strong expression in spleen and adult brain. Lower expression in placenta, lung, liver, spinal cord, thymus, small intestine, uterus, stomach, testis, fetal brain, and adrenal gland. Not detected in

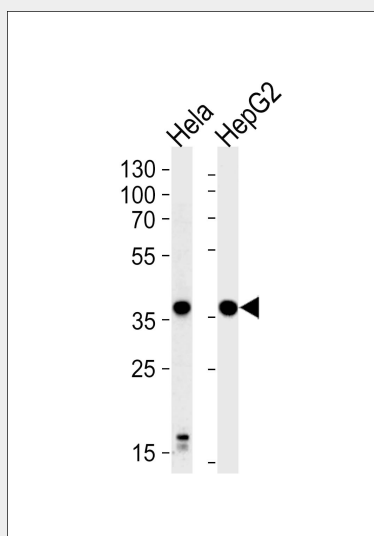
pancreas, heart, kidney, skeletal muscle, ovary or fetal aorta. Clearly detected in lymph node and bone marrow, weakly detected in peripheral blood mononuclear cells (PBMC) and in peripheral blood leukocytes (PBL), but not detected in polymorphonuclear cells (PMN). In the brain, detected in all brain regions examined

P2RY13 Antibody - Protocols

Provided below are standard protocols that you may find useful for product applications.

- [Western Blot](#)
- [Blocking Peptides](#)
- [Dot Blot](#)
- [Immunohistochemistry](#)
- [Immunofluorescence](#)
- [Immunoprecipitation](#)
- [Flow Cytometry](#)
- [Cell Culture](#)

P2RY13 Antibody - Images



Western blot analysis of lysates from HeLa, HepG2 cell line, using P2RY13 Antibody (G716). G716 was diluted at 1:1000. A goat anti-rabbit IgG H&L (HRP) at 1:5000 dilution was used as the secondary antibody. Lysates at 35ug.

P2RY13 Antibody - Background

Receptor for ADP. Coupled to G(i)-proteins. May play a role in hematopoiesis and the immune system.

P2RY13 Antibody - References

- Lee D.K., et al. Gene 275:83-91(2001).
Communi D., et al. J. Biol. Chem. 276:41479-41485(2001).
Wittenberger T., et al. J. Mol. Biol. 307:799-813(2001).
Wang Y.-G., et al. Submitted (FEB-2001) to the EMBL/GenBank/DDBJ databases.
Takeda S., et al. FEBS Lett. 520:97-101(2002).