

FEN1 Antibody
Purified Rabbit Polyclonal Antibody (Pab)
Catalog # AP50042**Specification**

FEN1 Antibody - Product Information

Application	WB, IF, IHC
Primary Accession	P39748
Reactivity	Human, Mouse, Rat
Host	Rabbit
Clonality	Polyclonal
Calculated MW	43,36 KDa
Antigen Region	107-132

FEN1 Antibody - Additional Information**Gene ID** 2237**Other Names**

Flap endonuclease 1 {ECO:0000255|HAMAP-Rule:MF_03140}, FEN-1 {ECO:0000255|HAMAP-Rule:MF_03140}, 31-- {ECO:0000255|HAMAP-Rule:MF_03140}, DNase IV, Flap structure-specific endonuclease 1 {ECO:0000255|HAMAP-Rule:MF_03140}, Maturation factor 1, MF1, hFEN-1, FEN1 {ECO:0000255|HAMAP-Rule:MF_03140}, RAD2

Dilution

WB~~ 1:1000
IF~~1:100
IHC~~1:50-1:100

Format

Rabbit IgG in phosphate buffered saline (without Mg²⁺ and Ca²⁺), pH 7.4, 150mM NaCl, 0.09% (W/V) sodium azide and 50% glycerol.

Storage Conditions

-20°C

FEN1 Antibody - Protein Information**Name** FEN1 {ECO:0000255|HAMAP-Rule:MF_03140}**Synonyms** RAD2**Function**

Structure-specific nuclease with 5'-flap endonuclease and 5'- 3' exonuclease activities involved in DNA replication and repair. During DNA replication, cleaves the 5'-overhanging flap structure that is generated by displacement synthesis when DNA polymerase encounters the 5'-end of a downstream Okazaki fragment. It enters the flap from the 5'-end and then tracks to cleave the flap base, leaving a nick for ligation. Also involved in the long patch base excision repair (LP-BER)

pathway, by cleaving within the apurinic/aprimidinic (AP) site- terminated flap. Acts as a genome stabilization factor that prevents flaps from equilibrating into structures that lead to duplications and deletions. Also possesses 5'-3' exonuclease activity on nicked or gapped double-stranded DNA, and exhibits RNase H activity. Also involved in replication and repair of rDNA and in repairing mitochondrial DNA.

Cellular Location

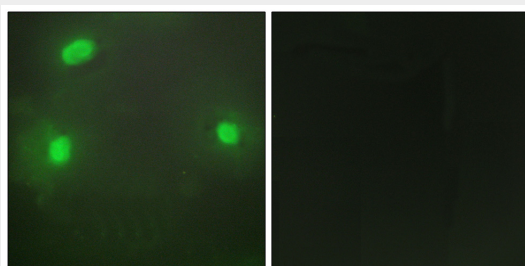
[Isoform 1]: Nucleus, nucleolus. Nucleus, nucleoplasm. Note=Resides mostly in the nucleoli and relocalizes to the nucleoplasm upon DNA damage

FEN1 Antibody - Protocols

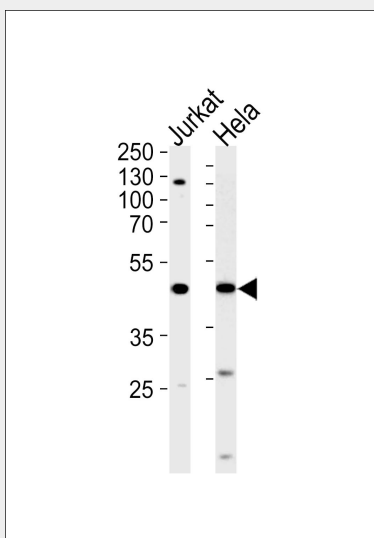
Provided below are standard protocols that you may find useful for product applications.

- [Western Blot](#)
- [Blocking Peptides](#)
- [Dot Blot](#)
- [Immunohistochemistry](#)
- [Immunofluorescence](#)
- [Immunoprecipitation](#)
- [Flow Cytometry](#)
- [Cell Culture](#)

FEN1 Antibody - Images

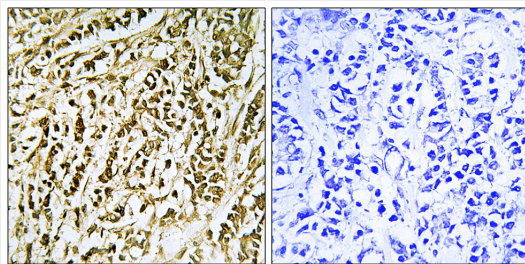


Immunofluorescence analysis of HeLa cells, using FEN1 antibody.



Western blot analysis of lysates from Jurkat, HeLa cell line (from left to right), using FEN1

Antibody(C10585). C10585 was diluted at 1:1000 at each lane. A goat anti-rabbit IgG H&L(HRP) at 1:5000 dilution was used as the secondary antibody. Lysates at 35ug per lane.



Immunohistochemistry analysis of paraffin-embedded human breast carcinoma tissue using FEN1 antibody.

FEN1 Antibody - Background

Structure-specific nuclease with 5'-flap endonuclease and 5'-3' exonuclease activities involved in DNA replication and repair. During DNA replication, cleaves the 5'-overhanging flap structure that is generated by displacement synthesis when DNA polymerase encounters the 5'-end of a downstream Okazaki fragment. It enters the flap from the 5'-end and then tracks to cleave the flap base, leaving a nick for ligation. Also involved in the long patch base excision repair (LP-BER) pathway, by cleaving within the apurinic/apyrimidinic (AP) site-terminated flap. Acts as a genome stabilization factor that prevents flaps from equilibrating into structures that lead to duplications and deletions. Also possesses 5'-3' exonuclease activity on nicked or gapped double-stranded DNA, and exhibits RNase H activity. Also involved in replication and repair of rDNA and in repairing mitochondrial DNA.

FEN1 Antibody - References

Murray J.M., et al. Mol. Cell. Biol. 14:4878-4888(1994).
Hiraoka L.R., et al. Genomics 25:220-225(1995).
Taylor T.D., et al. Nature 440:497-500(2006).
Robins P., et al. J. Biol. Chem. 269:28535-28538(1994).
Shen B., et al. J. Biol. Chem. 271:9173-9176(1996).