

C1S Antibody
Purified Rabbit Polyclonal Antibody (Pab)
Catalog # AP50057**Specification**

C1S Antibody - Product Information

Application	WB, IHC
Primary Accession	P09871
Reactivity	Human
Host	Rabbit
Clonality	Polyclonal
Calculated MW	77 KDa
Antigen Region	560-589

C1S Antibody - Additional Information**Gene ID** 716**Other Names**

Complement C1s subcomponent, C1 esterase, Complement component 1 subcomponent s, Complement C1s subcomponent heavy chain, Complement C1s subcomponent light chain, C1S

Dilution

WB~~ 1:500-1:1000

IHC~~1:50-1:100

Format

Rabbit IgG in phosphate buffered saline (without Mg²⁺ and Ca²⁺), pH 7.4, 150mM NaCl, 0.09% (W/V) sodium azide and 50% glycerol.

Storage Conditions

-20°C

C1S Antibody - Protein Information**Name** C1S {ECO:0000303|PubMed:3500856, ECO:0000312|HGNC:HGNC:1247}**Function**

Component of the complement C1 complex, a multiprotein complex that initiates the classical pathway of the complement system, a cascade of proteins that leads to phagocytosis and breakdown of pathogens and signaling that strengthens the adaptive immune system (PubMed:11445589, PubMed:16169853, PubMed:417728, PubMed:467643, PubMed:6271784, PubMed:6282646, PubMed:6319179, PubMed:70787, PubMed:9422791). C1S is activated following association of the C1 complex with immunoglobulins (IgG or IgM) complexed with antigens to form antigen-antibody complexes on the surface of pathogens (PubMed:34155115). C1S is cleaved and activated by C1R to generate C1s subcomponent heavy and light chains (PubMed:11445589, PubMed:6271784). C1s subcomponent light chain then cleaves and activates C2 and C4, the next components of the classical complement pathway (PubMed:16169853, PubMed:467643, PubMed:6282646, PubMed:6319179, PubMed:6906228, PubMed:70787, PubMed:9422791).

Cellular Location

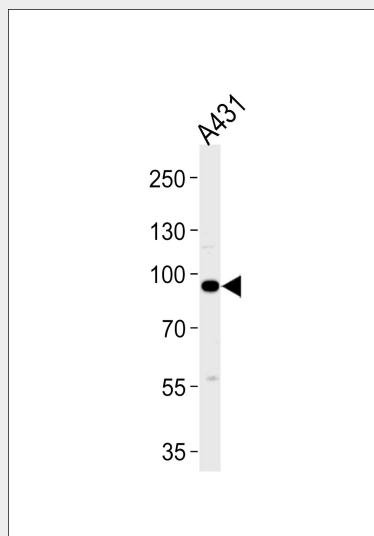
Secreted. Cell surface. Note=Recruited to the surface of pathogens by the C1Q subcomplex.

C1S Antibody - Protocols

Provided below are standard protocols that you may find useful for product applications.

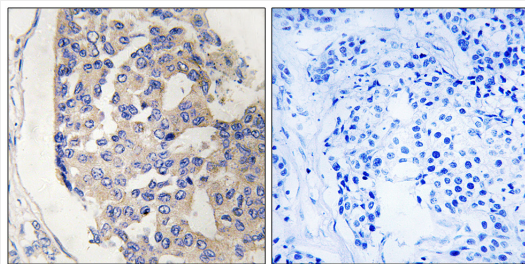
- [Western Blot](#)
- [Blocking Peptides](#)
- [Dot Blot](#)
- [Immunohistochemistry](#)
- [Immunofluorescence](#)
- [Immunoprecipitation](#)
- [Flow Cytometry](#)
- [Cell Culture](#)

C1S Antibody - Images



Western blot analysis of lysates from A431 cell line ,using C1S Antibody(C15211). C15211 was

diluted at 1:1000. A goat anti-rabbit IgG H&L(HRP) at 1:5000 dilution was used as the secondary antibody. Lysates at 35ug.



Immunohistochemistry analysis of paraffin-embedded human breast carcinoma tissue, using C1S antibody.

C1S Antibody - Background

C1s B chain is a serine protease that combines with C1q and C1r to form C1, the first component of the classical pathway of the complement system. C1r activates C1s so that it can, in turn, activate C2 and C4.

C1S Antibody - References

McKinnon C.M., et al. Eur. J. Biochem. 169:547-553(1987).
Tosi M., et al. Biochemistry 26:8516-8524(1987).
Kusumoto H., et al. Proc. Natl. Acad. Sci. U.S.A. 85:7307-7311(1988).
Mural R.J., et al. Submitted (SEP-2005) to the EMBL/GenBank/DDBJ databases.
Endo Y., et al. J. Immunol. 161:4924-4930(1998).