

SHC3 HUMAN
Affinity-Purified Rabbit Polyclonal Antibody (Pab)
Catalog # AP50058**Specification**

SHC3 HUMAN - Product Information

Application	WB, IHC
Primary Accession	Q92529
Reactivity	Human, Mouse, Rat
Host	Rabbit
Clonality	Polyclonal
Calculated MW	64.06 KDa
Antigen Region	305-330

SHC3 HUMAN - Additional Information**Gene ID** 53358**Other Names**

SHC-transforming protein 3, Neuronal Shc, N-Shc, Protein Rai, SHC-transforming protein C, Src homology 2 domain-containing-transforming protein C3, SH2 domain protein C3, SHC3, NSHC, SHCC

Dilution

WB~~ 1:1000

IHC~~1:50-1:100

Format

Rabbit IgG in phosphate buffered saline (without Mg²⁺ and Ca²⁺), pH 7.4, 150mM NaCl, 0.09% (W/V) sodium azide and 50% glycerol.

Storage Conditions

-20°C

SHC3 HUMAN - Protein Information**Name** SHC3**Synonyms** NSHC, SHCC**Function**

Signaling adapter that couples activated growth factor receptors to signaling pathway in neurons. Involved in the signal transduction pathways of neurotrophin-activated Trk receptors in cortical neurons.

Tissue Location

Mainly expressed in brain. Hardly detectable in other tissues, except in pancreas. Highly expressed in the cerebral cortex, frontal and temporal lobes, occipital pole, hippocampus, caudate

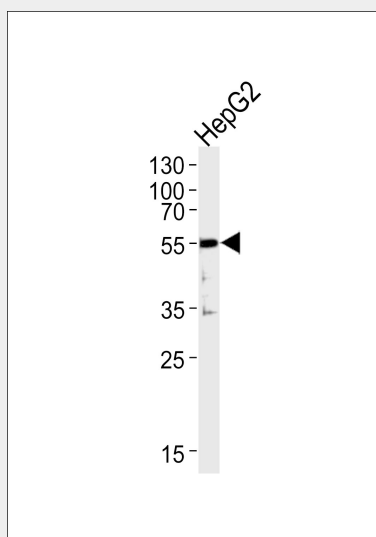
nucleus and amygdala. Expressed at low level in the cerebellum, medulla and spinal cord.

SHC3 HUMAN - Protocols

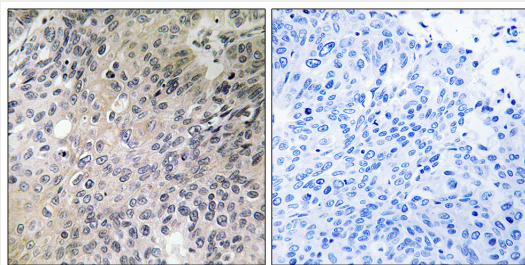
Provided below are standard protocols that you may find useful for product applications.

- [Western Blot](#)
- [Blocking Peptides](#)
- [Dot Blot](#)
- [Immunohistochemistry](#)
- [Immunofluorescence](#)
- [Immunoprecipitation](#)
- [Flow Cytometry](#)
- [Cell Culture](#)

SHC3 HUMAN - Images



Western blot analysis of lysates from HepG2 cell line, using SHC3_HUMAN(C18734). C18734 was diluted at 1:1000. A goat anti-rabbit IgG H&L(HRP) at 1:5000 dilution was used as the secondary antibody. Lysates at 35ug.



Immunohistochemistry analysis of paraffin-embedded human lung tissue using SHC3 antibody.

SHC3 HUMAN - Background

Signaling adapter that couples activated growth factor receptors to signaling pathway in neurons. Involved in the signal transduction pathways of neurotrophin-activated Trk receptors in cortical neurons.

SHC3 HUMAN - References

Nakamura T.,et al.Oncogene 13:1111-1121(1996).
Pelicci G.,et al.Oncogene 13:633-641(1996).
Humphray S.J.,et al.Nature 429:369-374(2004).
Liu H.Y.,et al.J. Biol. Chem. 277:26046-26056(2002).