

**FA13A (Cleaved-Gly39) Antibody**  
**Purified Rabbit Polyclonal Antibody (Pab)**  
**Catalog # AP50064**

**Specification**

---

**FA13A (Cleaved-Gly39) Antibody - Product Information**

Application	<b>WB</b>
Primary Accession	<a href="#">P00488</a>
Reactivity	<b>Human</b>
Host	<b>Rabbit</b>
Clonality	<b>Polyclonal</b>
Calculated MW	<b>83 KDa</b>
Antigen Region	<b>30-59</b>

**FA13A (Cleaved-Gly39) Antibody - Additional Information**

**Gene ID** 2162

**Other Names**

Coagulation factor XIII A chain, Coagulation factor XIIIa, Protein-glutamine gamma-glutamyltransferase A chain, Transglutaminase A chain, F13A1, F13A

**Dilution**

WB~~1:500- 1:1000

**Format**

Rabbit IgG in phosphate buffered saline (without Mg<sup>2+</sup> and Ca<sup>2+</sup>), pH 7.4, 150mM NaCl, 0.09% (W/V) sodium azide and 50% glycerol.

**Storage Conditions**

-20°C

**FA13A (Cleaved-Gly39) Antibody - Protein Information**

**Name** F13A1

**Synonyms** F13A

**Function**

Factor XIII is activated by thrombin and calcium ion to a transglutaminase that catalyzes the formation of gamma-glutamyl- epsilon-lysine cross-links between fibrin chains, thus stabilizing the fibrin clot. Also cross-link alpha-2-plasmin inhibitor, or fibronectin, to the alpha chains of fibrin.

**Cellular Location**

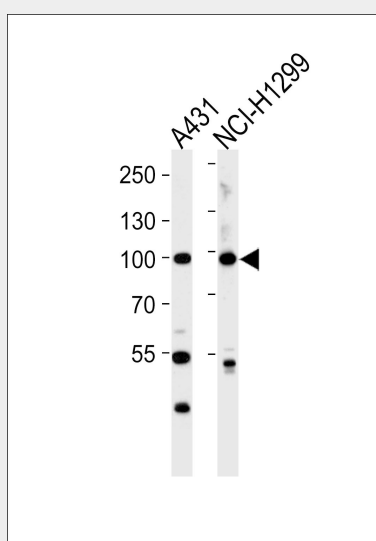
Cytoplasm. Secreted. Note=Secreted into the blood plasma. Cytoplasmic in most tissues, but also secreted in the blood plasma

## FA13A (Cleaved-Gly39) Antibody - Protocols

Provided below are standard protocols that you may find useful for product applications.

- [Western Blot](#)
- [Blocking Peptides](#)
- [Dot Blot](#)
- [Immunohistochemistry](#)
- [Immunofluorescence](#)
- [Immunoprecipitation](#)
- [Flow Cytometry](#)
- [Cell Culture](#)

## FA13A (Cleaved-Gly39) Antibody - Images



Western blot analysis of lysates from A431, NCI-H1299 cell line (from left to right), using FA13A (Cleaved-Gly39) Antibody (L0206). L0206 was diluted at 1:1000 at each lane. A goat anti-rabbit IgG H&L (HRP) at 1:5000 dilution was used as the secondary antibody. Lysates at 35 µg per lane.

## FA13A (Cleaved-Gly39) Antibody - Background

Factor XIII is activated by thrombin and calcium ion to a transglutaminase that catalyzes the formation of gamma-glutamyl-epsilon-lysine cross-links between fibrin chains, thus stabilizing the fibrin clot. Also cross-link alpha-2-plasmin inhibitor, or fibronectin, to the alpha chains of fibrin.

## FA13A (Cleaved-Gly39) Antibody - References

- Ichinose A., et al. *Biochemistry* 25:6900-6906(1986).  
Grundmann U., et al. *Proc. Natl. Acad. Sci. U.S.A.* 83:8024-8028(1986).  
Ichinose A., et al. *Proc. Natl. Acad. Sci. U.S.A.* 85:5829-5833(1988).  
Totoki Y., et al. Submitted (MAR-2005) to the EMBL/GenBank/DBJ databases.  
Mungall A.J., et al. *Nature* 425:805-811(2003).