

**Keratin 17 Antibody**  
**Purified Rabbit Polyclonal Antibody (Pab)**  
**Catalog # AP50190****Specification**

---

**Keratin 17 Antibody - Product Information**

Application	WB, IF, IHC
Primary Accession	<a href="#">Q04695</a>
Reactivity	Human, Mouse, Rat
Host	Rabbit
Clonality	Polyclonal
Calculated MW	48 KDa
Antigen Region	400-430

**Keratin 17 Antibody - Additional Information****Gene ID** 3872**Other Names**

Keratin, type I cytoskeletal 17, Cytokeratin-17, CK-17, Keratin-17, K17, KRT17

**Dilution**

WB~~ 1:1000

IF~~1:100

IHC~~1:50-1:100

**Format**Rabbit IgG in phosphate buffered saline (without Mg<sup>2+</sup> and Ca<sup>2+</sup>), pH 7.4, 150mM NaCl, 0.09% (W/V) sodium azide and 50% glycerol.**Storage Conditions**

-20°C

**Keratin 17 Antibody - Protein Information****Name** KRT17**Function**

Type I keratin involved in the formation and maintenance of various skin appendages, specifically in determining shape and orientation of hair (By similarity). Required for the correct growth of hair follicles, in particular for the persistence of the anagen (growth) state (By similarity). Modulates the function of TNF-alpha in the specific context of hair cycling. Regulates protein synthesis and epithelial cell growth through binding to the adapter protein SFN and by stimulating Akt/mTOR pathway (By similarity). Involved in tissue repair. May be a marker of basal cell differentiation in complex epithelia and therefore indicative of a certain type of epithelial 'stem cells'. Acts as a promoter of epithelial proliferation by acting a regulator of immune response in skin: promotes Th1/Th17-dominated immune environment contributing to the development of basaloid skin tumors (By similarity). May act as an autoantigen in the immunopathogenesis of psoriasis, with

certain peptide regions being a major target for autoreactive T-cells and hence causing their proliferation.

**Cellular Location**

Cytoplasm {ECO:0000250|UniProtKB:Q9QWL7}.

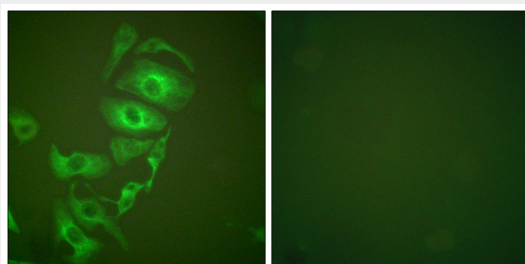
**Tissue Location**

Expressed in the outer root sheath and medulla region of hair follicle specifically from eyebrow and beard, digital pulp, nail matrix and nail bed epithelium, mucosal stratified squamous epithelia and in basal cells of oral epithelium, palmoplantar epidermis and sweat and mammary glands. Also expressed in myoepithelium of prostate, basal layer of urinary bladder, cambial cells of sebaceous gland and in exocervix (at protein level)

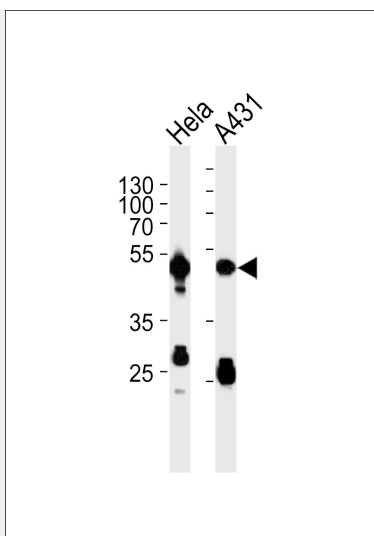
**Keratin 17 Antibody - Protocols**

Provided below are standard protocols that you may find useful for product applications.

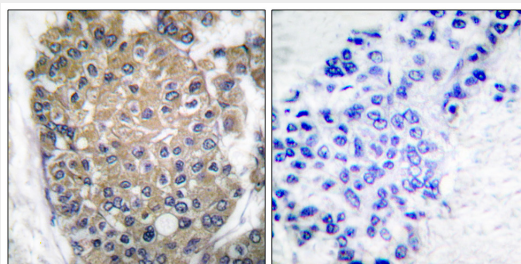
- [Western Blot](#)
- [Blocking Peptides](#)
- [Dot Blot](#)
- [Immunohistochemistry](#)
- [Immunofluorescence](#)
- [Immunoprecipitation](#)
- [Flow Cytometry](#)
- [Cell Culture](#)

**Keratin 17 Antibody - Images**

Immunofluorescence analysis of HepG2 cells, using keratin 17 antibody. The negative controls in the ICC image is produced with the immunizing peptide.



Western blot analysis of lysates from HeLa, A431 cell line (from left to right), using Keratin 17 Antibody (C0242). C0242 was diluted at 1:1000 at each lane. A goat anti-rabbit IgG H&L (HRP) at 1:5000 dilution was used as the secondary antibody. Lysates at 35 µg per lane.



Immunohistochemical analysis of paraffin-embedded human breast carcinoma tissue using keratin 17 antibody. The negative controls in the IHC image is produced with the immunizing peptide.

### Keratin 17 Antibody - Background

May play a role in the formation and maintenance of various skin appendages, specifically in determining shape and orientation of hair. May be a marker of basal cell differentiation in complex epithelia and therefore indicative of a certain type of epithelial "stem cells". May act as an autoantigen in the immunopathogenesis of psoriasis, with certain peptide regions being a major target for autoreactive T-cells and hence causing their proliferation. Required for the correct growth of hair follicles, in particular for the persistence of the anagen (growth) state. Modulates the function of TNF-α in the specific context of hair cycling. Regulates protein synthesis and epithelial cell growth through binding to the adapter protein SFN and by stimulating Akt/mTOR pathway. Involved in tissue repair (By similarity).

### Keratin 17 Antibody - References

Troyanovsky S.M., et al. Eur. J. Cell Biol. 59:127-137(1992).  
Flohr T., et al. Eur. J. Immunol. 22:975-979(1992).  
Ota T., et al. Nat. Genet. 36:40-45(2004).  
Zody M.C., et al. Nature 440:1045-1049(2006).  
McLean W.H.I., et al. Nat. Genet. 9:273-278(1995).