

FOLR1 Antibody
Purified Rabbit Polyclonal Antibody (Pab)
Catalog # AP50196**Specification**

FOLR1 Antibody - Product Information

Application	WB
Primary Accession	P15328
Reactivity	Human, Mouse, Rat
Host	Rabbit
Clonality	Polyclonal
Calculated MW	30 KDa
Antigen Region	61-89

FOLR1 Antibody - Additional Information**Gene ID** 2348**Other Names**

Folate receptor alpha, FR-alpha, Adult folate-binding protein, FBP, Folate receptor 1, Folate receptor, adult, KB cells FBP, Ovarian tumor-associated antigen MOv18, FOLR1, FOLR

Dilution

WB~~ 1:1000

Format

Rabbit IgG in phosphate buffered saline (without Mg²⁺ and Ca²⁺), pH 7.4, 150mM NaCl, 0.09% (W/V) sodium azide and 50% glycerol.

Storage Conditions

-20°C

FOLR1 Antibody - Protein Information**Name** FOLR1**Synonyms** FOLR**Function**

Binds to folate and reduced folic acid derivatives and mediates delivery of 5-methyltetrahydrofolate and folate analogs into the interior of cells (PubMed:[19074442](http://www.uniprot.org/citations/19074442), PubMed:[23851396](http://www.uniprot.org/citations/23851396), PubMed:[23934049](http://www.uniprot.org/citations/23934049), PubMed:[2527252](http://www.uniprot.org/citations/2527252), PubMed:[8033114](http://www.uniprot.org/citations/8033114), PubMed:[8567728](http://www.uniprot.org/citations/8567728)). Has high affinity for folate and folic acid analogs at neutral pH (PubMed:[8567728](http://www.uniprot.org/citations/8567728)).

href="http://www.uniprot.org/citations/23851396" target="_blank">23851396, PubMed:23934049, PubMed:2527252, PubMed:8033114, PubMed:8567728). Exposure to slightly acidic pH after receptor endocytosis triggers a conformation change that strongly reduces its affinity for folates and mediates their release (PubMed:8567728). Required for normal embryonic development and normal cell proliferation (By similarity).

Cellular Location

Cell membrane; Lipid-anchor, GPI-anchor Apical cell membrane; Lipid-anchor, GPI- anchor Basolateral cell membrane; Lipid-anchor, GPI-like-anchor. Secreted Cytoplasmic vesicle. Cytoplasmic vesicle, clathrin-coated vesicle. Endosome. Note=Endocytosed into cytoplasmic vesicles and then recycled to the cell membrane

Tissue Location

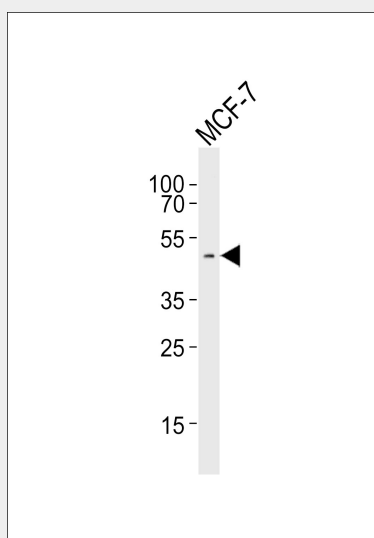
Primarily expressed in tissues of epithelial origin. Expression is increased in malignant tissues. Expressed in kidney, lung and cerebellum. Detected in placenta and thymus epithelium.

FOLR1 Antibody - Protocols

Provided below are standard protocols that you may find useful for product applications.

- [Western Blot](#)
- [Blocking Peptides](#)
- [Dot Blot](#)
- [Immunohistochemistry](#)
- [Immunofluorescence](#)
- [Immunoprecipitation](#)
- [Flow Cytometry](#)
- [Cell Culture](#)

FOLR1 Antibody - Images



Western blot analysis of lysate from MCF-7 cell line, using FOLR1 Antibody (C15761). C15761 was diluted at 1:1000. A goat anti-rabbit IgG H&L (HRP) at 1:5000 dilution was used as the secondary

antibody.Lysate at 35ug.

FOLR1 Antibody - Background

Binds to folate and reduced folic acid derivatives and mediates delivery of 5-methyltetrahydrofolate and folate analogs into the interior of cells. Has high affinity for folate and folic acid analogs at neutral pH. Exposure to slightly acidic pH after receptor endocytosis triggers a conformation change that strongly reduces its affinity for folates and mediates their release. Required for normal embryonic development and normal cell proliferation.

FOLR1 Antibody - References

Elwood P.C.,et al.J. Biol. Chem. 264:14893-14901(1989).
Lacey S.W.,et al.J. Clin. Invest. 84:715-720(1989).
Campbell I.G.,et al.Cancer Res. 51:5329-5338(1991).
Coney L.R.,et al.Cancer Res. 51:6125-6132(1991).
Sadasivan E.,et al.Biochim. Biophys. Acta 1131:91-94(1992).