

CCDC42 Antibody (Center)
Affinity Purified Rabbit Polyclonal Antibody (Pab)
Catalog # AP5019c**Specification**

CCDC42 Antibody (Center) - Product Information

Application	IHC-P, WB,E
Primary Accession	Q96M95
Reactivity	Human, Mouse
Host	Rabbit
Clonality	Polyclonal
Isotype	Rabbit IgG
Calculated MW	38019
Antigen Region	121-150

CCDC42 Antibody (Center) - Additional Information**Gene ID** 146849**Other Names**

Coiled-coil domain-containing protein 42A, CCDC42, CCDC42A

Target/Specificity

This CCDC42 antibody is generated from rabbits immunized with a KLH conjugated synthetic peptide between 121-150 amino acids from the Central region of human CCDC42.

Dilution

IHC-P~~1:50~100

WB~~1:1000

E~~Use at an assay dependent concentration.

Format

Purified polyclonal antibody supplied in PBS with 0.09% (W/V) sodium azide. This antibody is purified through a protein A column, followed by peptide affinity purification.

Storage

Maintain refrigerated at 2-8°C for up to 2 weeks. For long term storage store at -20°C in small aliquots to prevent freeze-thaw cycles.

Precautions

CCDC42 Antibody (Center) is for research use only and not for use in diagnostic or therapeutic procedures.

CCDC42 Antibody (Center) - Protein Information**Name** CCDC42 ([HGNC:26528](#))**Function** Essential for male fertility. Required for sperm development.

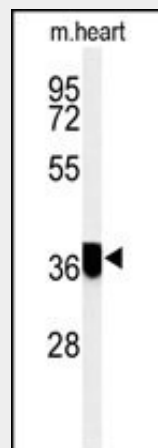
Cellular Location

Cytoplasm, perinuclear region {ECO:0000250|UniProtKB:Q5SV66}. Cytoplasm, cytoskeleton {ECO:0000250|UniProtKB:Q5SV66}. Cell projection, cilium, flagellum {ECO:0000250|UniProtKB:Q5SV66}. Cytoplasm, cytoskeleton, microtubule organizing center, centrosome {ECO:0000250|UniProtKB:Q5SV66} Note=Weakly expressed in the cytoplasm of round spermatids. In elongating spermatids, localizes to the manchette microtubules and the perinuclear ring. In the sperm flagellum, strongly expressed in the principle piece and also located to the connecting piece and weakly to the midpiece. Localizes to the centrosome in somatic cells {ECO:0000250|UniProtKB:Q5SV66}

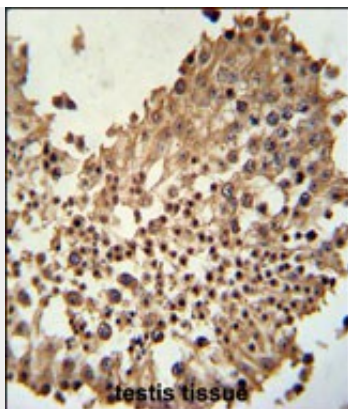
CCDC42 Antibody (Center) - Protocols

Provided below are standard protocols that you may find useful for product applications.

- [Western Blot](#)
- [Blocking Peptides](#)
- [Dot Blot](#)
- [Immunohistochemistry](#)
- [Immunofluorescence](#)
- [Immunoprecipitation](#)
- [Flow Cytometry](#)
- [Cell Culture](#)

CCDC42 Antibody (Center) - Images

Western blot analysis of CCDC42 Antibody (Center) (Cat. #AP5019c) in mouse heart tissue lysates (35ug/lane).CCDC42 (arrow) was detected using the purified Pab.



CCDC42 Antibody (Center) (Cat. #AP5019c) immunohistochemistry analysis in formalin fixed and paraffin embedded human testis tissue followed by peroxidase conjugation of the secondary antibody and DAB staining. This data demonstrates the use of the CCDC42 Antibody (Center) for immunohistochemistry. Clinical relevance has not been evaluated.

CCDC42 Antibody (Center) - References

Rual, J.F., et al. Genome Res. 14 (10B), 2128-2135 (2004)