

TTF2 Antibody
Purified Rabbit Polyclonal Antibody (Pab)
Catalog # AP50207**Specification**

TTF2 Antibody - Product Information

| | |
|-------------------|------------------------|
| Application | WB |
| Primary Accession | O00358 |
| Reactivity | Human, Mouse, Rat |
| Host | Rabbit |
| Clonality | Polyclonal |
| Calculated MW | 38 KDa |
| Antigen Region | 2-32 |

TTF2 Antibody - Additional Information**Gene ID** 2304**Other Names**

Forkhead box protein E1, Forkhead box protein E2, Forkhead-related protein FKHL15, HFKH4, HNF-3/fork head-like protein 5, HFKL5, Thyroid transcription factor 2, TTF-2, FOXE1, FKHL15, FOXE2, TITF2, TTF2

Dilution

WB~~1:500-1:1000

Format

Rabbit IgG in phosphate buffered saline (without Mg²⁺ and Ca²⁺), pH 7.4, 150mM NaCl, 0.09% (W/V) sodium azide and 50% glycerol.

Storage Conditions

-20°C

TTF2 Antibody - Protein Information**Name** FOXE1**Synonyms** FKHL15, FOXE2, TITF2, TTF2**Function**

Transcription factor that binds consensus sites on a variety of gene promoters and activate their transcription. Involved in proper palate formation, most probably through the expression of MSX1 and TGFB3 genes which are direct targets of this transcription factor. Also implicated in thyroid gland morphogenesis. May indirectly play a role in cell growth and migration through the regulation of WNT5A expression.

Cellular Location

Nucleus.

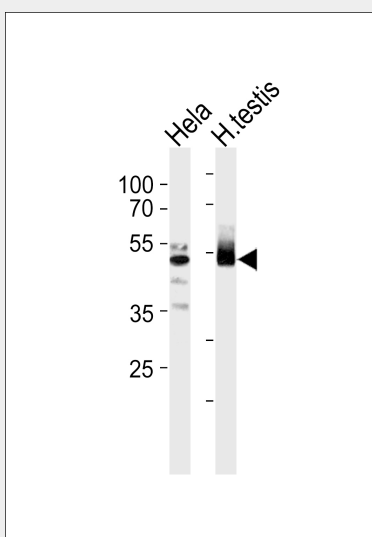
Tissue Location

Detected in adult brain, placenta, lung, liver, skeletal muscle, kidney, pancreas, heart, colon, small intestine testis and thymus. Expression was strongest in heart and pancreas

TTF2 Antibody - Protocols

Provided below are standard protocols that you may find useful for product applications.

- [Western Blot](#)
- [Blocking Peptides](#)
- [Dot Blot](#)
- [Immunohistochemistry](#)
- [Immunofluorescence](#)
- [Immunoprecipitation](#)
- [Flow Cytometry](#)
- [Cell Culture](#)

TTF2 Antibody - Images

Western blot analysis of lysates from HeLa cell line and human testis tissue lysate (from left to right), using TTF2 Antibody (C10022). C10022 was diluted at 1:1000 at each lane. A goat anti-rabbit IgG H&L (HRP) at 1:5000 dilution was used as the secondary antibody. Lysates at 35 µg per lane.

TTF2 Antibody - Background

Probable transcription factor. Could be involved in thyroid gland organogenesis.

TTF2 Antibody - References

Wiese S., et al. *DNA Cell Biol.* 16:165-171 (1997).
Chadwick B.P., et al. *Genomics* 41:390-396 (1997).
Macchia P.E., et al. *Biochimie* 81:433-440 (1999).
Humphray S.J., et al. *Nature* 429:369-374 (2004).
Mural R.J., et al. Submitted (JUL-2005) to the EMBL/GenBank/DDBJ databases.