

KRT82 Antibody (Center)
Affinity Purified Rabbit Polyclonal Antibody (Pab)
Catalog # AP5049c**Specification**

KRT82 Antibody (Center) - Product Information

Application	IHC-P, WB,E
Primary Accession	Q9NSB4
Other Accession	Q99M74
Reactivity	Human, Mouse
Host	Rabbit
Clonality	Polyclonal
Isotype	Rabbit IgG
Antigen Region	312-341

KRT82 Antibody (Center) - Additional Information**Gene ID** 3888**Other Names**

Keratin, type II cuticular Hb2, Keratin-82, K82, Type II hair keratin Hb2, Type-II keratin Kb22, KRT82, KRTHB2

Target/Specificity

This KRT82 antibody is generated from rabbits immunized with a KLH conjugated synthetic peptide between 312-341 amino acids from the Central region of human KRT82.

Dilution

IHC-P~~1:50~100

WB~~1:1000

E~~Use at an assay dependent concentration.

Format

Purified polyclonal antibody supplied in PBS with 0.09% (W/V) sodium azide. This antibody is purified through a protein A column, followed by peptide affinity purification.

Storage

Maintain refrigerated at 2-8°C for up to 2 weeks. For long term storage store at -20°C in small aliquots to prevent freeze-thaw cycles.

Precautions

KRT82 Antibody (Center) is for research use only and not for use in diagnostic or therapeutic procedures.

KRT82 Antibody (Center) - Protein Information**Name** KRT82

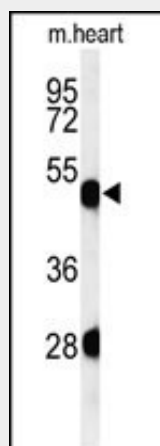
Synonyms KRTHB2

KRT82 Antibody (Center) - Protocols

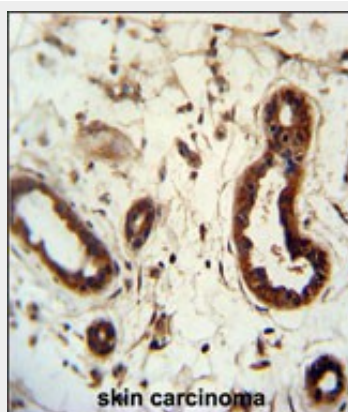
Provided below are standard protocols that you may find useful for product applications.

- [Western Blot](#)
- [Blocking Peptides](#)
- [Dot Blot](#)
- [Immunohistochemistry](#)
- [Immunofluorescence](#)
- [Immunoprecipitation](#)
- [Flow Cytometry](#)
- [Cell Culture](#)

KRT82 Antibody (Center) - Images



Western blot analysis of KRT82 Antibody (Center) (Cat. #AP5049c) in mouse heart tissue lysates (35ug/lane). KRT82 (arrow) was detected using the purified Pab.



KRT82 Antibody (Center) (Cat. #AP5049c) immunohistochemistry analysis in formalin fixed and paraffin embedded human skin carcinoma followed by peroxidase conjugation of the secondary antibody and DAB staining. This data demonstrates the use of the KRT82 Antibody (Center) for immunohistochemistry. Clinical relevance has not been evaluated.

KRT82 Antibody (Center) - Background

KRT82 is a member of the keratin gene family. As a type II hair keratin, it is a basic protein which heterodimerizes with type I keratins to form hair and nails. The type II hair keratins are clustered in a region of chromosome 12q13 and are grouped into two distinct subfamilies based on structure similarity. One subfamily, consisting of KRTHB1, KRTHB3, and KRTHB6, is highly related. The other less-related subfamily includes KRTHB2, KRTHB4, and KRTHB5. All hair keratins are expressed in the hair follicle; this keratin appears to be a hair cuticle-specific keratin.

KRT82 Antibody (Center) - References

Ewing, R.M., et al. Mol. Syst. Biol. 3, 89 (2007) Schweizer, J., et al. J. Cell Biol. 174(2):169-174(2006)
Rogers, M.A., et al. J. Invest. Dermatol. 124(3):536-544(2005)