

GIMAP4 Antibody
Purified Rabbit Polyclonal Antibody (Pab)
Catalog # AP50581**Specification**

GIMAP4 Antibody - Product Information

Application	WB
Primary Accession	O9NUV9
Reactivity	Human
Host	Rabbit
Clonality	Polyclonal
Calculated MW	38 KDa
Antigen Region	151-182

GIMAP4 Antibody - Additional Information**Gene ID** 55303**Other Names**

GTPase IMAP family member 4, Immunity-associated nucleotide 1 protein, IAN-1, hIAN1, Immunity-associated protein 4, GIMAP4, IAN1, IMAP4

Dilution

WB~~1:500-1:1000

FormatRabbit IgG in phosphate buffered saline (without Mg²⁺ and Ca²⁺), pH 7.4, 150mM NaCl, 0.09% (W/V) sodium azide and 50% glycerol.**Storage Conditions**

-20°C

GIMAP4 Antibody - Protein Information**Name** GIMAP4**Synonyms** IAN1, IMAP4**Function**

During thymocyte development, may play a role in the regulation of apoptosis (By similarity). GTPase which exhibits a higher affinity for GDP than for GTP.

Cellular Location

Cytoplasm, cytosol.

Tissue Location

Highly expressed in spleen and peripheral blood leukocytes that contain mostly T- and B-lymphocytes. Expressed specifically in resting T- and B-lymphocytes and expression significantly

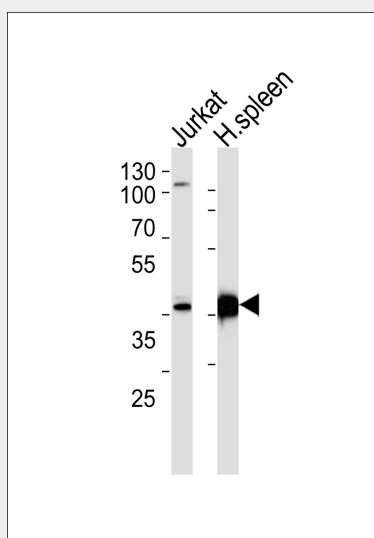
decreases during B- or T-lymphocyte activation. Expressed at lower levels in thymus, ovary, colon and small intestine

GIMAP4 Antibody - Protocols

Provided below are standard protocols that you may find useful for product applications.

- [Western Blot](#)
- [Blocking Peptides](#)
- [Dot Blot](#)
- [Immunohistochemistry](#)
- [Immunofluorescence](#)
- [Immunoprecipitation](#)
- [Flow Cytometry](#)
- [Cell Culture](#)

GIMAP4 Antibody - Images



Western blot analysis of lysates from Jurkat cell line and human spleen tissue lysate (from left to right), using GIMAP4 Antibody (AP50581). AP50581 was diluted at 1:1000 at each lane. A goat anti-rabbit IgG H&L (HRP) at 1:5000 dilution was used as the secondary antibody. Lysates at 35 µg per lane.

GIMAP4 Antibody - Background

May play a role in regulating lymphocyte apoptosis (By similarity). Exhibits intrinsic GTPase activity. Shows a higher affinity for GDP over GTP (about 12-fold higher), and binding shows an absolute requirement for magnesium.

GIMAP4 Antibody - References

- Cambot M., et al. Blood 99:3293-3301 (2002).
Liu Y.Q., et al. Submitted (DEC-1998) to the EMBL/GenBank/DDBJ databases.
Ota T., et al. Nat. Genet. 36:40-45 (2004).
Schwefel D., et al. Structure 21:550-559 (2013).