

MAP9 Antibody (C-term)
Affinity Purified Rabbit Polyclonal Antibody (Pab)
Catalog # AP5058b

Specification

MAP9 Antibody (C-term) - Product Information

Application	WB, FC,E
Primary Accession	Q49MG5
Reactivity	Human
Host	Rabbit
Clonality	Polyclonal
Isotype	Rabbit IgG
Antigen Region	511-539

MAP9 Antibody (C-term) - Additional Information

Gene ID 79884

Other Names

Microtubule-associated protein 9, Aster-associated protein, MAP9, ASAP

Target/Specificity

This MAP9 antibody is generated from rabbits immunized with a KLH conjugated synthetic peptide between 511-539 amino acids from the C-terminal region of human MAP9.

Dilution

WB~~1:1000

FC~~1:10~50

Format

Purified polyclonal antibody supplied in PBS with 0.09% (W/V) sodium azide. This antibody is purified through a protein A column, followed by peptide affinity purification.

Storage

Maintain refrigerated at 2-8°C for up to 2 weeks. For long term storage store at -20°C in small aliquots to prevent freeze-thaw cycles.

Precautions

MAP9 Antibody (C-term) is for research use only and not for use in diagnostic or therapeutic procedures.

MAP9 Antibody (C-term) - Protein Information

Name MAP9

Synonyms ASAP

Function Involved in organization of the bipolar mitotic spindle. Required for bipolar spindle

assembly, mitosis progression and cytokinesis. May act by stabilizing interphase microtubules.

Cellular Location

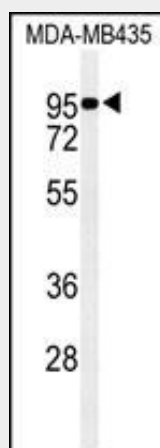
Cytoplasm. Cytoplasm, cytoskeleton. Cytoplasm, cytoskeleton, spindle. Note=Localizes to microtubules in interphase, associates with the mitotic spindle during mitosis, localizes to the central body during cytokinesis

MAP9 Antibody (C-term) - Protocols

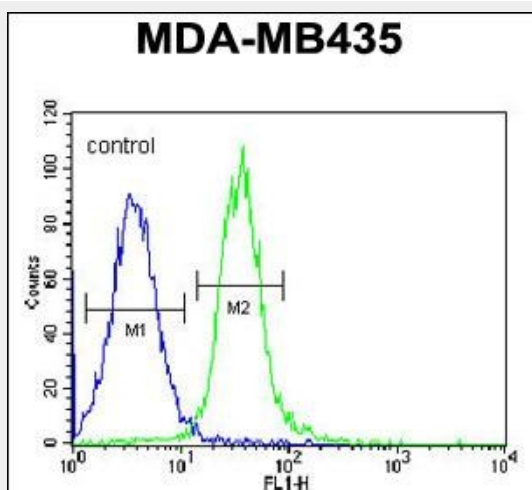
Provided below are standard protocols that you may find useful for product applications.

- [Western Blot](#)
- [Blocking Peptides](#)
- [Dot Blot](#)
- [Immunohistochemistry](#)
- [Immunofluorescence](#)
- [Immunoprecipitation](#)
- [Flow Cytometry](#)
- [Cell Culture](#)

MAP9 Antibody (C-term) - Images



Western blot analysis of MAP9 Antibody (C-term) (Cat. #AP5058b) in MDA-MB435 cell line lysates (35ug/lane). MAP9 (arrow) was detected using the purified Pab.



MAP9 Antibody (C-term) (Cat. #AP5058b) flow cytometric analysis of MDA-MB435 cells (right histogram) compared to a negative control cell (left histogram). FITC-conjugated goat-anti-rabbit secondary antibodies were used for the analysis.

MAP9 Antibody (C-term) - Background

MAP9 is a microtubule-associated protein required for spindle function, mitotic progression, and cytokinesis.

MAP9 Antibody (C-term) - References

Venoux, M., et al. Hum. Mol. Genet. 17(2):215-224(2008)

Matsuoka, S., et al. Science 316(5828):1160-1166(2007)

Saffin, J.M., et al. Proc. Natl. Acad. Sci. U.S.A. 102(32):11302-11307(2005)