

CREBZF Antibody
Purified Rabbit Polyclonal Antibody (Pab)
Catalog # AP50597**Specification**

CREBZF Antibody - Product Information

Application	IF, WB
Primary Accession	Q9NS37
Reactivity	Human, Mouse
Host	Rabbit
Clonality	Polyclonal
Calculated MW	37 KDa
Antigen Region	232-264

CREBZF Antibody - Additional Information**Gene ID** 58487**Other Names**

CREB/ATF bZIP transcription factor, Host cell factor-binding transcription factor Zhangfei, HCF-binding transcription factor Zhangfei, CREBZF, ZF

Dilution

IF~~1:100

WB~~ 1:1000

Format

Rabbit IgG in phosphate buffered saline (without Mg²⁺ and Ca²⁺), pH 7.4, 150mM NaCl, 0.09% (W/V) sodium azide and 50% glycerol.

Storage Conditions

-20°C

CREBZF Antibody - Protein Information**Name** CREBZF**Synonyms** ZF**Function**

Strongly activates transcription when bound to HCFC1. Suppresses the expression of HSV proteins in cells infected with the virus in a HCFC1-dependent manner. Also suppresses the HCFC1-dependent transcriptional activation by CREB3 and reduces the amount of CREB3 in the cell. Able to down-regulate expression of some cellular genes in CREBZF-expressing cells.

Cellular Location

Nucleus. Note=Colocalizes in promyelocytic leukemia protein nuclear bodies (PML- NB) with CREB3 and HCFC1

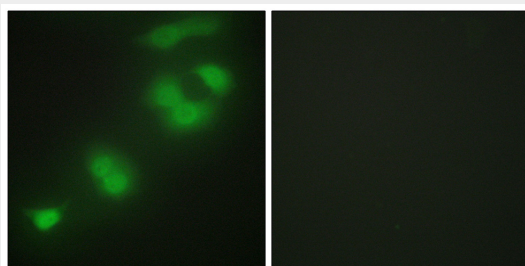
Tissue Location

In adults, expressed most abundantly in heart, liver and skeletal muscle, moderately abundant in kidney and pancreas, and barely detectable in lung. In fetal tissues, expressed most abundantly in kidney and very low amounts in heart, lung and liver

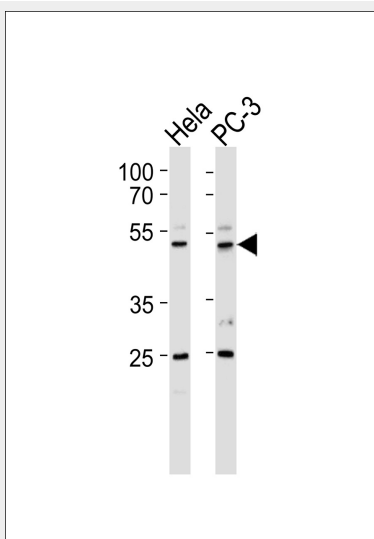
CREBZF Antibody - Protocols

Provided below are standard protocols that you may find useful for product applications.

- [Western Blot](#)
- [Blocking Peptides](#)
- [Dot Blot](#)
- [Immunohistochemistry](#)
- [Immunofluorescence](#)
- [Immunoprecipitation](#)
- [Flow Cytometry](#)
- [Cell Culture](#)

CREBZF Antibody - Images

Immunofluorescence analysis of HepG2 cells, using CREBZF antibody.



Western blot analysis of lysates from HeLa, PC-3 cell line (from left to right), using CREBZF Antibody (AP50597). AP50597 was diluted at 1:1000 at each lane. A goat anti-rabbit IgG H&L (HRP) at 1:5000 dilution was used as the secondary antibody. Lysates at 35 µg per lane.

CREBZF Antibody - Background

Strongly activates transcription when bound to HCFC1. Suppresses the expression of HSV proteins in cells infected with the virus in a HCFC1-dependent manner. Also suppresses the HCFC1-dependent transcriptional activation by CREB3 and reduces the amount of CREB3 in the cell. Able to down-regulate expression of some cellular genes in CREBZF-expressing cells.

CREBZF Antibody - References

Lu R.,et al.Nucleic Acids Res. 28:2446-2454(2000).
Taylor T.D.,et al.Nature 440:497-500(2006).
Ota T.,et al.Nat. Genet. 36:40-45(2004).
Zhang J.W.,et al.Submitted (JUL-2005) to the EMBL/GenBank/DDBJ databases.
Misra V.,et al.J. Biol. Chem. 280:15257-15266(2005).