

DDX24 Antibody
Purified Rabbit Polyclonal Antibody (Pab)
Catalog # AP50610**Specification**

DDX24 Antibody - Product Information

Application	WB, IHC
Primary Accession	O9GZR7
Reactivity	Human
Host	Rabbit
Clonality	Polyclonal
Calculated MW	96,90 KDa
Antigen Region	60-89

DDX24 Antibody - Additional Information**Gene ID** 57062**Other Names**

ATP-dependent RNA helicase DDX24, DEAD box protein 24, DDX24

Dilution

WB~~ 1:1000

IHC~~1:50-1:100

FormatRabbit IgG in phosphate buffered saline (without Mg²⁺ and Ca²⁺), pH 7.4, 150mM NaCl, 0.09% (W/V) sodium azide and 50% glycerol.**Storage Conditions**

-20°C

DDX24 Antibody - Protein Information**Name** DDX24**Function**

ATP-dependent RNA helicase that plays a role in various aspects of RNA metabolism including pre-mRNA splicing and is thereby involved in different biological processes such as cell cycle regulation or innate immunity (PubMed:24204270, PubMed:24980433). Plays an inhibitory role in TP53 transcriptional activity and subsequently in TP53 controlled cell growth arrest and senescence by inhibiting its EP300 mediated acetylation (PubMed:25867071). Negatively regulates cytosolic RNA-mediated innate immune signaling at least in part by affecting RIPK1/IRF7 interactions. Alternatively, possesses antiviral activity by recognizing gammaherpesvirus transcripts in the context of lytic reactivation (PubMed:36298642).

Plays an essential role in cell cycle regulation in vascular smooth muscle cells by interacting with and regulating FANCA (Fanconi anemia complementation group A) mRNA (By similarity).

Cellular Location

Cytoplasm. Nucleus

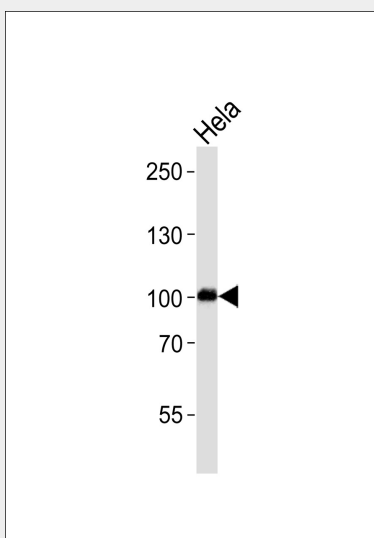
Tissue Location

Ubiquitous. Most abundant in heart and brain, but with lowest levels in thymus and small intestine

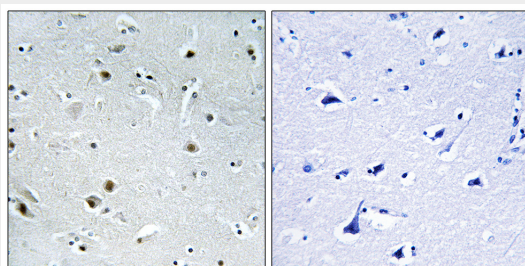
DDX24 Antibody - Protocols

Provided below are standard protocols that you may find useful for product applications.

- [Western Blot](#)
- [Blocking Peptides](#)
- [Dot Blot](#)
- [Immunohistochemistry](#)
- [Immunofluorescence](#)
- [Immunoprecipitation](#)
- [Flow Cytometry](#)
- [Cell Culture](#)

DDX24 Antibody - Images

Western blot analysis of lysate from Hela cell line, using DDX24 Antibody (AP50610). AP50610 was diluted at 1:1000. A goat anti-rabbit IgG H&L (HRP) at 1:5000 dilution was used as the secondary antibody. Lysate at 35 µg.



Immunohistochemistry analysis of paraffin-embedded human brain tissue using DDX24 antibody.

DDX24 Antibody - Background

ATP-dependent RNA helicase (Potential).

DDX24 Antibody - References

Zhao Y.,et al.Genomics 67:351-355(2000).
Wiemann S.,et al.Genome Res. 11:422-435(2001).
Ota T.,et al.Nat. Genet. 36:40-45(2004).
Olsen J.V.,et al.Cell 127:635-648(2006).
Beausoleil S.A.,et al.Nat. Biotechnol. 24:1285-1292(2006).