

CLIC3 Antibody
Purified Rabbit Polyclonal Antibody (Pab)
Catalog # AP50638**Specification**

CLIC3 Antibody - Product Information

Application	WB
Primary Accession	O95833
Reactivity	Human
Host	Rabbit
Clonality	Polyclonal
Calculated MW	27 KDa
Antigen Region	41-69

CLIC3 Antibody - Additional Information**Gene ID** 9022**Other Names**

Chloride intracellular channel protein 3, CLIC3

Dilution

WB~~1:1000

FormatRabbit IgG in phosphate buffered saline (without Mg²⁺ and Ca²⁺), pH 7.4, 150mM NaCl, 0.09% (W/V) sodium azide and 50% glycerol.**Storage Conditions**

-20°C

CLIC3 Antibody - Protein Information**Name** CLIC3 {ECO:0000303|PubMed:32066374, ECO:0000312|HGNC:HGNC:2064}**Function**

In the soluble state, catalyzes glutaredoxin-like thiol disulfide exchange reactions with reduced glutathione as electron donor (PubMed:28198360, PubMed:37759794). Reduced in a glutathione-dependent way and secreted into the extracellular matrix where it activates TGM2 and promotes blood vessel growth during tissue remodeling as occurs in tumorigenesis. Can reduce specific cysteines in TGM2 and regulate cofactor binding (PubMed:28198360). Can insert into membranes and form outwardly rectifying chloride ion channels. May participate in cellular growth control.

Cellular Location

Nucleus. Membrane; Single-pass membrane protein. Cell membrane; Single-pass membrane

protein. Cytoplasm. Secreted, extracellular space, extracellular matrix. Note=Predominantly nuclear. Some protein was found in the cytoplasm. Exists both as soluble cytoplasmic protein and as membrane protein with probably a single transmembrane domain (By similarity). Secreted into the extracellular matrix by activated fibroblasts. {ECO:0000250, ECO:0000269|PubMed:28198360}

Tissue Location

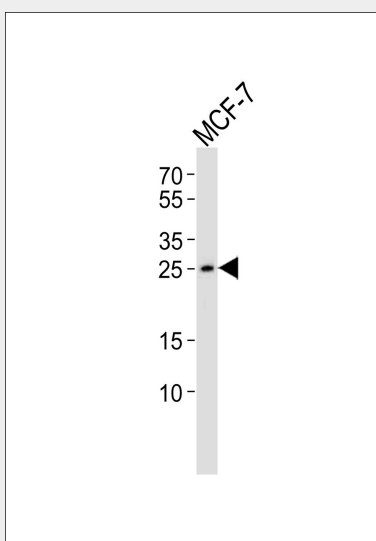
Detected in placenta (at protein level). Widely expressed. High expression is found in placenta followed by lung and heart. Low expression in skeletal muscle, kidney and pancreas

CLIC3 Antibody - Protocols

Provided below are standard protocols that you may find useful for product applications.

- [Western Blot](#)
- [Blocking Peptides](#)
- [Dot Blot](#)
- [Immunohistochemistry](#)
- [Immunofluorescence](#)
- [Immunoprecipitation](#)
- [Flow Cytometry](#)
- [Cell Culture](#)

CLIC3 Antibody - Images



Western blot analysis of lysate from MCF-7 cell line, using CLIC3 Antibody (AP50638). AP50638 was diluted at 1:1000. A goat anti-rabbit IgG H&L (HRP) at 1:5000 dilution was used as the secondary antibody. Lysate at 35 µg.

CLIC3 Antibody - Background

Can insert into membranes and form chloride ion channels. May participate in cellular growth control.

CLIC3 Antibody - References

Humphray S.J., et al. Nature 429:369-374 (2004).

Mural R.J.,et al.Submitted (JUL-2005) to the EMBL/GenBank/DDBJ databases.
Qian Z.,et al.J. Biol. Chem. 274:1621-1627(1999).
Money T.T.,et al.Placenta 28:429-436(2007).
Littler D.R.,et al.Proteins 78:1594-1600(2010).