

THRB Antibody (AP2, Cleaved-Arg327)
Purified Rabbit Polyclonal Antibody (Pab)
Catalog # AP50644**Specification**

THRB Antibody (AP2, Cleaved-Arg327) - Product Information

Application	WB
Primary Accession	P00734
Reactivity	Human
Host	Rabbit
Clonality	Polyclonal
Calculated MW	70 KDa
Antigen Region	305-332

THRB Antibody (AP2, Cleaved-Arg327) - Additional Information**Gene ID** 2147**Other Names**

Prothrombin, Coagulation factor II, Activation peptide fragment 1, Activation peptide fragment 2, Thrombin light chain, Thrombin heavy chain, F2

Dilution

WB~~1:1000

Format

Rabbit IgG in phosphate buffered saline (without Mg²⁺ and Ca²⁺), pH 7.4, 150mM NaCl, 0.09% (W/V) sodium azide and 50% glycerol.

Storage Conditions

-20°C

THRB Antibody (AP2, Cleaved-Arg327) - Protein Information**Name** F2**Function**

Thrombin, which cleaves bonds after Arg and Lys, converts fibrinogen to fibrin and activates factors V, VII, VIII, XIII, and, in complex with thrombomodulin, protein C. Functions in blood homeostasis, inflammation and wound healing. Activates coagulation factor XI (F11); activation is promoted by the contact with negatively charged surfaces (PubMed:2019570, PubMed:21976677). Triggers the production of pro- inflammatory cytokines, such as MCP-1/CCL2 and IL8/CXCL8, in endothelial cells (PubMed:30568593, PubMed:9780208).

Cellular Location

Secreted, extracellular space.

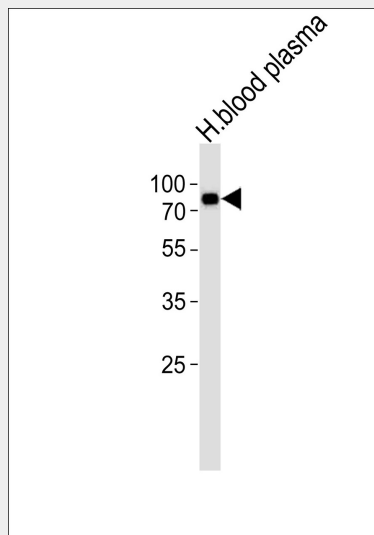
Tissue Location

Expressed by the liver and secreted in plasma.

THRB Antibody (AP2, Cleaved-Arg327) - Protocols

Provided below are standard protocols that you may find useful for product applications.

- [Western Blot](#)
- [Blocking Peptides](#)
- [Dot Blot](#)
- [Immunohistochemistry](#)
- [Immunofluorescence](#)
- [Immunoprecipitation](#)
- [Flow Cytometry](#)
- [Cell Culture](#)

THRB Antibody (AP2, Cleaved-Arg327) - Images

Western blot analysis of lysate from human blood plasma tissue lysate, using THRB Antibody (AP2, Cleaved-Arg327) (AP50644). AP50644 was diluted at 1:1000. A goat anti-rabbit IgG H&L (HRP) at 1:5000 dilution was used as the secondary antibody. Lysate at 35ug.

THRB Antibody (AP2, Cleaved-Arg327) - Background

Thrombin, which cleaves bonds after Arg and Lys, converts fibrinogen to fibrin and activates factors V, VII, VIII, XIII, and, in complex with thrombomodulin, protein C. Functions in blood homeostasis, inflammation and wound healing.

THRB Antibody (AP2, Cleaved-Arg327) - References

- Degen S.J.F., et al. *Biochemistry* 26:6165-6177 (1987).
Wang W., et al. *Haemophilia* 10:94-97 (2004).
Ota T., et al. *Nat. Genet.* 36:40-45 (2004).
Suzuki Y., et al. Submitted (APR-2005) to the EMBL/GenBank/DDBJ databases.
Degen S.J.F., et al. *Biochemistry* 22:2087-2097 (1983).

