

C1S Antibody (heavy chain, Cleaved-Arg437)
Purified Rabbit Polyclonal Antibody (Pab)
Catalog # AP50647**Specification**

C1S Antibody (heavy chain, Cleaved-Arg437) - Product Information

Application	WB
Primary Accession	P09871
Reactivity	Human
Host	Rabbit
Clonality	Polyclonal
Calculated MW	77 KDa
Antigen Region	425-452

C1S Antibody (heavy chain, Cleaved-Arg437) - Additional Information**Gene ID** 716**Other Names**

Complement C1s subcomponent, C1 esterase, Complement component 1 subcomponent s, Complement C1s subcomponent heavy chain, Complement C1s subcomponent light chain, C1S

Dilution

WB~~1:500

Format

Rabbit IgG in phosphate buffered saline (without Mg²⁺ and Ca²⁺), pH 7.4, 150mM NaCl, 0.09% (W/V) sodium azide and 50% glycerol.

Storage Conditions

-20°C

C1S Antibody (heavy chain, Cleaved-Arg437) - Protein Information**Name** C1S**Function**

C1s B chain is a serine protease that combines with C1q and C1r to form C1, the first component of the classical pathway of the complement system. C1r activates C1s so that it can, in turn, activate C2 and C4.

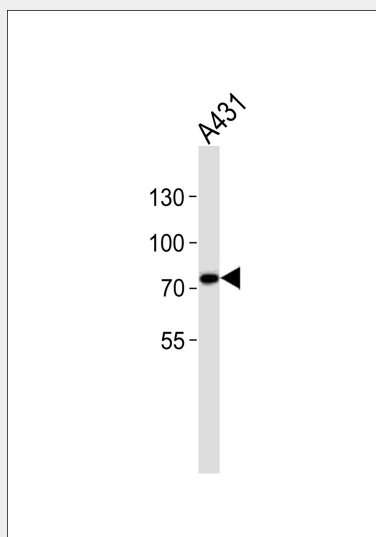
C1S Antibody (heavy chain, Cleaved-Arg437) - Protocols

Provided below are standard protocols that you may find useful for product applications.

- [Western Blot](#)

- [Blocking Peptides](#)
- [Dot Blot](#)
- [Immunohistochemistry](#)
- [Immunofluorescence](#)
- [Immunoprecipitation](#)
- [Flow Cytometry](#)
- [Cell Culture](#)

C1S Antibody (heavy chain, Cleaved-Arg437) - Images



Western blot analysis of lysate from A431 cell line, using C1S Antibody (heavy chain, Cleaved-Arg437)(AP50647). AP50647 was diluted at 1:500. A goat anti-rabbit IgG H&L(HRP) at 1:5000 dilution was used as the secondary antibody. Lysate at 35ug.

C1S Antibody (heavy chain, Cleaved-Arg437) - Background

C1s B chain is a serine protease that combines with C1q and C1r to form C1, the first component of the classical pathway of the complement system. C1r activates C1s so that it can, in turn, activate C2 and C4.

C1S Antibody (heavy chain, Cleaved-Arg437) - References

McKinnon C.M., et al. Eur. J. Biochem. 169:547-553(1987).
Tosi M., et al. Biochemistry 26:8516-8524(1987).
Kusumoto H., et al. Proc. Natl. Acad. Sci. U.S.A. 85:7307-7311(1988).
Mural R.J., et al. Submitted (SEP-2005) to the EMBL/GenBank/DBJ databases.
Endo Y., et al. J. Immunol. 161:4924-4930(1998).