

TAF15 Antibody
Purified Rabbit Polyclonal Antibody (Pab)
Catalog # AP50655

Specification

TAF15 Antibody - Product Information

Application	WB, IHC
Primary Accession	O92804
Reactivity	Human, Mouse
Host	Rabbit
Clonality	Polyclonal
Calculated MW	62 KDa
Antigen Region	371-400

TAF15 Antibody - Additional Information

Gene ID 8148

Other Names

TATA-binding protein-associated factor 2N, 68 kDa TATA-binding protein-associated factor, TAF(II)68, TAFII68, RNA-binding protein 56, TAF15, RBP56, TAF2N

Dilution

WB~~1:1000
IHC~~1:50-1:100

Format

Rabbit IgG in phosphate buffered saline (without Mg²⁺ and Ca²⁺), pH 7.4, 150mM NaCl, 0.09% (W/V) sodium azide and 50% glycerol.

Storage Conditions

-20°C

TAF15 Antibody - Protein Information

Name TAF15

Synonyms RBP56, TAF2N

Function

RNA and ssDNA-binding protein that may play specific roles during transcription initiation at distinct promoters. Can enter the preinitiation complex together with the RNA polymerase II (Pol II).

Cellular Location

Nucleus. Cytoplasm. Note=Shuttles from the nucleus to the cytoplasm

Tissue Location

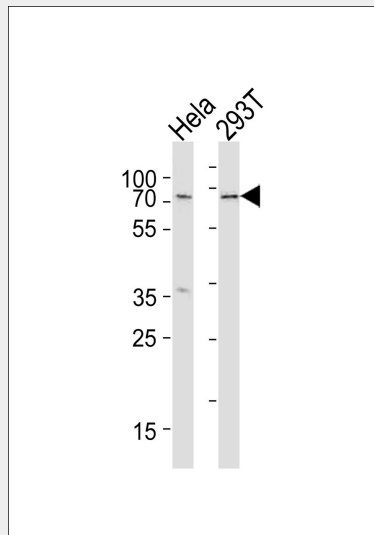
Ubiquitous. Observed in all fetal and adult tissues

TAF15 Antibody - Protocols

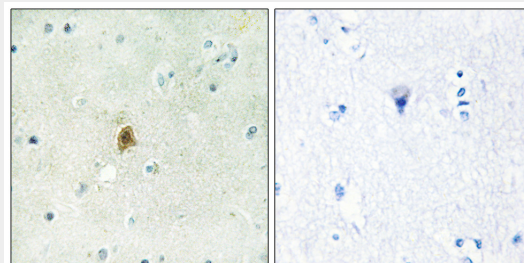
Provided below are standard protocols that you may find useful for product applications.

- [Western Blot](#)
- [Blocking Peptides](#)
- [Dot Blot](#)
- [Immunohistochemistry](#)
- [Immunofluorescence](#)
- [Immunoprecipitation](#)
- [Flow Cytometry](#)
- [Cell Culture](#)

TAF15 Antibody - Images



Western blot analysis of lysates from HeLa,293T cell line (from left to right),using TAF15 Antibody(AP50655). AP50655 was diluted at 1:1000 at each lane. A goat anti-rabbit IgG H&L(HRP) at 1:5000 dilution was used as the secondary antibody.Lysates at 35µg per lane.



Immunohistochemistry analysis of paraffin-embedded human brain tissue using TAF15 antibody.

TAF15 Antibody - Background

RNA and ssDNA-binding protein that may play specific roles during transcription initiation at distinct promoters. Can enter the preinitiation complex together with the RNA polymerase II (Pol II).

TAF15 Antibody - References

- Morohoshi F., et al. *Genomics* 38:51-57(1996).
Bertolotti A., et al. *EMBO J.* 15:5022-5031(1996).
Morohoshi F., et al. *Gene* 221:191-198(1998).
Ota T., et al. *Nat. Genet.* 36:40-45(2004).
Zody M.C., et al. *Nature* 440:1045-1049(2006).