

14-3-3 θ Antibody
Purified Rabbit Polyclonal Antibody (Pab)
Catalog # AP50665**Specification**

14-3-3 θ Antibody - Product Information

Application	WB
Primary Accession	P27348
Reactivity	Human, Mouse, Rat
Host	Rabbit
Clonality	Polyclonal
Calculated MW	28 KDa
Antigen Region	60-89

14-3-3 θ Antibody - Additional Information**Gene ID** 10971**Other Names**

14-3-3 protein theta, 14-3-3 protein T-cell, 14-3-3 protein tau, Protein HS1, YWHAQ

Dilution

WB~~1:1000

FormatRabbit IgG in phosphate buffered saline (without Mg²⁺ and Ca²⁺), pH 7.4, 150mM NaCl, 0.09% (W/V) sodium azide and 50% glycerol.**Storage Conditions**

-20°C

14-3-3 θ Antibody - Protein Information**Name** YWHAQ**Function**

Adapter protein implicated in the regulation of a large spectrum of both general and specialized signaling pathways. Binds to a large number of partners, usually by recognition of a phosphoserine or phosphothreonine motif. Binding generally results in the modulation of the activity of the binding partner. Negatively regulates the kinase activity of PDPK1.

Cellular Location

Cytoplasm. Note=In neurons, axonally transported to the nerve terminals

Tissue Location

Abundantly expressed in brain, heart and pancreas, and at lower levels in kidney and placenta. Up-regulated in the lumbar spinal cord from patients with sporadic amyotrophic lateral sclerosis (ALS) compared with controls, with highest levels of expression in individuals with predominant

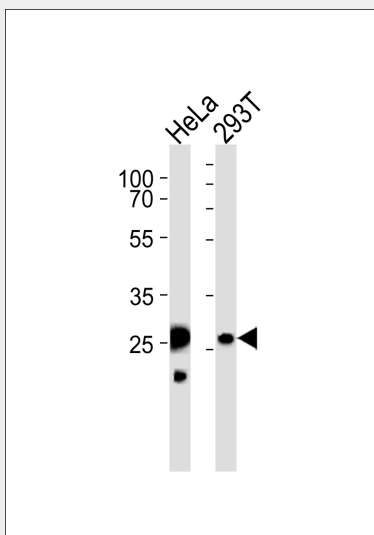
lower motor neuron involvement

14-3-3 θ Antibody - Protocols

Provided below are standard protocols that you may find useful for product applications.

- [Western Blot](#)
- [Blocking Peptides](#)
- [Dot Blot](#)
- [Immunohistochemistry](#)
- [Immunofluorescence](#)
- [Immunoprecipitation](#)
- [Flow Cytometry](#)
- [Cell Culture](#)

14-3-3 θ Antibody - Images



Western blot analysis of lysates from HeLa, 293T cell line (from left to right), using 14-3-3 θ Antibody (AP50665). AP50665 was diluted at 1:1000 at each lane. A goat anti-rabbit IgG H&L (HRP) at 1:5000 dilution was used as the secondary antibody. Lysates at 35 μ g per lane.

14-3-3 θ Antibody - Background

Adapter protein implicated in the regulation of a large spectrum of both general and specialized signaling pathways. Binds to a large number of partners, usually by recognition of a phosphoserine or phosphothreonine motif. Binding generally results in the modulation of the activity of the binding partner. Negatively regulates the kinase activity of PDPK1.

14-3-3 θ Antibody - References

Nielsen P.J., et al. Biochim. Biophys. Acta 1088:425-428 (1991).
Leffers H., et al. J. Mol. Biol. 231:982-998 (1993).
Kalline N., et al. Submitted (OCT-2004) to the EMBL/GenBank/DDBJ databases.
Mural R.J., et al. Submitted (SEP-2005) to the EMBL/GenBank/DDBJ databases.
Gevaert K., et al. Nat. Biotechnol. 21:566-569 (2003).