

**MX2 Antibody**  
**Purified Rabbit Polyclonal Antibody (Pab)**  
**Catalog # AP50672****Specification**

---

**MX2 Antibody - Product Information**

Application	<b>WB</b>
Primary Accession	<a href="#">P20592</a>
Reactivity	<b>Human</b>
Host	<b>Rabbit</b>
Clonality	<b>Polyclonal</b>
Calculated MW	<b>82 KDa</b>
Antigen Region	<b>380-411</b>

**MX2 Antibody - Additional Information****Gene ID** 4600**Other Names**

Interferon-induced GTP-binding protein Mx2, Interferon-regulated resistance GTP-binding protein MxB, Myxovirus resistance protein 2, p78-related protein, MX2

**Dilution**

WB~~1:1000

**Format**

Rabbit IgG in phosphate buffered saline (without Mg<sup>2+</sup> and Ca<sup>2+</sup>), pH 7.4, 150mM NaCl, 0.09% (W/V) sodium azide and 50% glycerol.

**Storage Conditions**

-20°C

**MX2 Antibody - Protein Information****Name** MX2**Function**

Interferon-induced dynamin-like GTPase with potent antiviral activity against human immunodeficiency virus type 1 (HIV-1). Acts by targeting the viral capsid and affects the nuclear uptake and/or stability of the HIV-1 replication complex and the subsequent chromosomal integration of the proviral DNA. Exhibits antiviral activity also against simian immunodeficiency virus (SIV-mnd). May play a role in regulating nucleocytoplasmic transport and cell-cycle progression.

**Cellular Location**

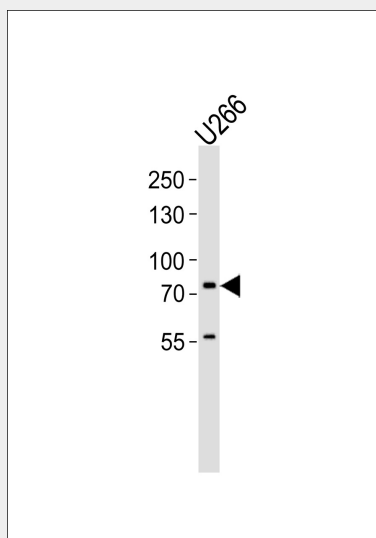
Cytoplasm. Nucleus. Nucleus, nuclear pore complex. Note=Localization to nuclear pores requires GTP-binding

## MX2 Antibody - Protocols

Provided below are standard protocols that you may find useful for product applications.

- [Western Blot](#)
- [Blocking Peptides](#)
- [Dot Blot](#)
- [Immunohistochemistry](#)
- [Immunofluorescence](#)
- [Immunoprecipitation](#)
- [Flow Cytometry](#)
- [Cell Culture](#)

## MX2 Antibody - Images



Western blot analysis of lysate from U266 cell line, using MX2 Antibody (AP50672). AP50672 was diluted at 1:1000. A goat anti-rabbit IgG H&L (HRP) at 1:5000 dilution was used as the secondary antibody. Lysate at 35 µg.

## MX2 Antibody - Background

Interferon-induced dynamin-like GTPase with potent antiviral activity against human immunodeficiency virus type 1 (HIV-1). Acts by targeting the viral capsid and affects the nuclear uptake and/or stability of the HIV-1 replication complex and the subsequent chromosomal integration of the proviral DNA. Exhibits antiviral activity also against simian immunodeficiency virus (SIV-mnd). May play a role in regulating nucleocytoplasmic transport and cell-cycle progression.

## MX2 Antibody - References

Aebi M., et al. Mol. Cell. Biol. 9:5062-5072 (1989).  
Hattori M., et al. Nature 405:311-319 (2000).  
Mural R.J., et al. Submitted (SEP-2005) to the EMBL/GenBank/DBJ databases.  
Horisberger M.A., et al. J. Virol. 64:1171-1181 (1990).  
King M.C., et al. Proc. Natl. Acad. Sci. U.S.A. 101:8957-8962 (2004).