

**COMT Antibody**  
**Purified Rabbit Polyclonal Antibody (Pab)**  
**Catalog # AP50677****Specification**

---

**COMT Antibody - Product Information**

Application	<b>WB</b>
Primary Accession	<a href="#">P21964</a>
Host	<b>Rabbit</b>
Clonality	<b>Polyclonal</b>
Calculated MW	<b>30 24(R&amp;D 25 and 30 kDa) kDa</b>
Antigen Region	<b>84-110</b>

**COMT Antibody - Additional Information****Gene ID** 1312**Other Names**

Catechol O-methyltransferase, COMT

**Dilution**

WB~~1:1000

**Format**Rabbit IgG in phosphate buffered saline (without Mg<sup>2+</sup> and Ca<sup>2+</sup>), pH 7.4, 150mM NaCl, 0.09% (W/V) sodium azide and 50% glycerol.**Storage Conditions**

-20°C

**COMT Antibody - Protein Information****Name** COMT ([HGNC:2228](#))**Function**

Catalyzes the O-methylation, and thereby the inactivation, of catecholamine neurotransmitters and catechol hormones. Also shortens the biological half-lives of certain neuroactive drugs, like L-DOPA, alpha-methyl DOPA and isoproterenol.

**Cellular Location**

[Isoform Soluble]: Cytoplasm

**Tissue Location**

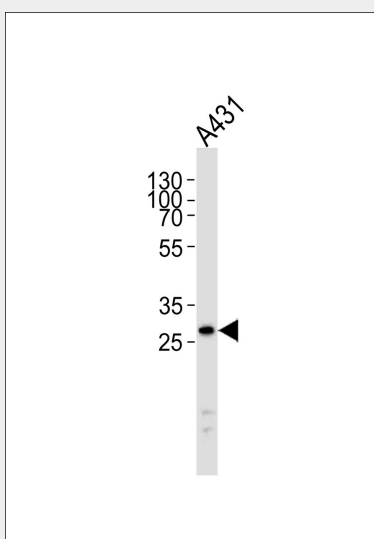
Brain, liver, placenta, lymphocytes and erythrocytes

**COMT Antibody - Protocols**

Provided below are standard protocols that you may find useful for product applications.

- [Western Blot](#)
- [Blocking Peptides](#)
- [Dot Blot](#)
- [Immunohistochemistry](#)
- [Immunofluorescence](#)
- [Immunoprecipitation](#)
- [Flow Cytometry](#)
- [Cell Culture](#)

### COMT Antibody - Images



Western blot analysis of lysate from A431 cell line, using COMT Antibody (AP50677). AP50677 was diluted at 1:1000. A goat anti-rabbit IgG H&L (HRP) at 1:5000 dilution was used as the secondary antibody. Lysate at 35 µg.

### COMT Antibody - Background

Catalyzes the O-methylation, and thereby the inactivation, of catecholamine neurotransmitters and catechol hormones. Also shortens the biological half-lives of certain neuroactive drugs, like L-DOPA, alpha-methyl DOPA and isoproterenol.

### COMT Antibody - References

- Lundstroem K., et al. *DNA Cell Biol.* 10:181-189(1991).  
Bertocci B., et al. *Proc. Natl. Acad. Sci. U.S.A.* 88:1416-1420(1991).  
Tenhunen J., et al. *Eur. J. Biochem.* 223:1049-1059(1994).  
Ota T., et al. *Nat. Genet.* 36:40-45(2004).  
Collins J.E., et al. *Genome Biol.* 5:R84.1-R84.11(2004).