

**MAT1 Antibody**  
**Purified Rabbit Polyclonal Antibody (Pab)**  
**Catalog # AP50692****Specification**

---

**MAT1 Antibody - Product Information**

Application	WB
Primary Accession	<a href="#">P51948</a>
Reactivity	Human, Mouse, Rat
Host	Rabbit
Clonality	Polyclonal
Calculated MW	36 31 KDa
Antigen Region	111-140

**MAT1 Antibody - Additional Information****Gene ID** 4331**Other Names**

CDK-activating kinase assembly factor MAT1, CDK7/cyclin-H assembly factor, Cyclin-G1-interacting protein, Menage a trois, RING finger protein 66, RING finger protein MAT1, p35, p36, MNAT1, CAP35, MAT1, RNF66

**Dilution**

WB~~1:1000

**Format**

Rabbit IgG in phosphate buffered saline (without Mg<sup>2+</sup> and Ca<sup>2+</sup>), pH 7.4, 150mM NaCl, 0.09% (W/V) sodium azide and 50% glycerol.

**Storage Conditions**

-20°C

**MAT1 Antibody - Protein Information****Name** MNAT1**Synonyms** CAP35, MAT1, RNF66**Function**

Stabilizes the cyclin H-CDK7 complex to form a functional CDK-activating kinase (CAK) enzymatic complex. CAK activates the cyclin-associated kinases CDK1, CDK2, CDK4 and CDK6 by threonine phosphorylation. CAK complexed to the core-TFIIF basal transcription factor activates RNA polymerase II by serine phosphorylation of the repetitive C-terminal domain (CTD) of its large subunit (POLR2A), allowing its escape from the promoter and elongation of the transcripts. Involved in cell cycle control and in RNA transcription by RNA polymerase II.

**Cellular Location**

Nucleus.

#### **Tissue Location**

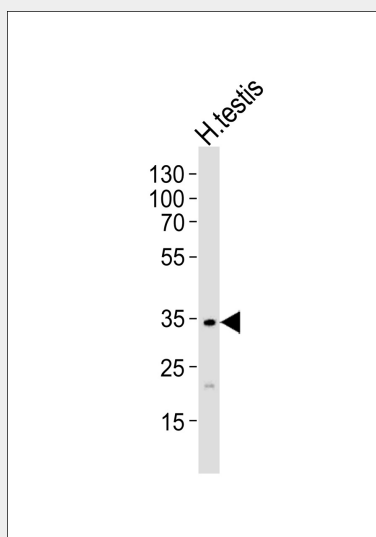
Highest levels in colon and testis. Moderate levels are present thymus, prostate, ovary, and small intestine. The lowest levels are found in spleen and leukocytes

#### **MAT1 Antibody - Protocols**

Provided below are standard protocols that you may find useful for product applications.

- [Western Blot](#)
- [Blocking Peptides](#)
- [Dot Blot](#)
- [Immunohistochemistry](#)
- [Immunofluorescence](#)
- [Immunoprecipitation](#)
- [Flow Cytometry](#)
- [Cell Culture](#)

#### **MAT1 Antibody - Images**



Western blot analysis of lysate from human testis tissue lysate, using MAT1 Antibody (AP50692). AP50692 was diluted at 1:1000. A goat anti-rabbit IgG H&L (HRP) at 1:5000 dilution was used as the secondary antibody. Lysate at 35ug.

#### **MAT1 Antibody - Background**

Stabilizes the cyclin H-CDK7 complex to form a functional CDK-activating kinase (CAK) enzymatic complex. CAK activates the cyclin-associated kinases CDK1, CDK2, CDK4 and CDK6 by threonine phosphorylation. CAK complexed to the core-TFIIF basal transcription factor activates RNA polymerase II by serine phosphorylation of the repetitive C-terminus domain (CTD) of its large subunit (POLR2A), allowing its escape from the promoter and elongation of the transcripts. Involved in cell cycle control and in RNA transcription by RNA polymerase II.

#### **MAT1 Antibody - References**

Tassan J.-P., et al. EMBO J. 14:5608-5617 (1995).

Yee A.,et al.Cancer Res. 55:6058-6062(1995).

Xu F.,et al.Submitted (JUN-1996) to the EMBL/GenBank/DDBJ databases.

Ebert L.,et al.Submitted (MAY-2004) to the EMBL/GenBank/DDBJ databases.

Heilig R.,et al.Nature 421:601-607(2003).