

CLK2 Antibody
Purified Rabbit Polyclonal Antibody (Pab)
Catalog # AP50695**Specification**

CLK2 Antibody - Product Information

Application	WB
Primary Accession	P49760
Reactivity	Human, Mouse, Rat
Host	Rabbit
Clonality	Polyclonal
Calculated MW	60 18 KDa
Antigen Region	4-35

CLK2 Antibody - Additional Information**Gene ID** 1196**Other Names**

Dual specificity protein kinase CLK2, CDC-like kinase 2, CLK2

Dilution

WB~~1:1000

FormatRabbit IgG in phosphate buffered saline (without Mg²⁺ and Ca²⁺), pH 7.4, 150mM NaCl, 0.09% (W/V) sodium azide and 50% glycerol.**Storage Conditions**

-20°C

CLK2 Antibody - Protein Information**Name** CLK2**Function**

Dual specificity kinase acting on both serine/threonine and tyrosine-containing substrates. Phosphorylates serine- and arginine- rich (SR) proteins of the spliceosomal complex. May be a constituent of a network of regulatory mechanisms that enable SR proteins to control RNA splicing and can cause redistribution of SR proteins from speckles to a diffuse nucleoplasmic distribution. Acts as a suppressor of hepatic gluconeogenesis and glucose output by repressing PPARGC1A transcriptional activity on gluconeogenic genes via its phosphorylation. Phosphorylates PPP2R5B thereby stimulating the assembly of PP2A phosphatase with the PPP2R5B-AKT1 complex leading to dephosphorylation of AKT1. Phosphorylates: PTPN1, SRSF1 and SRSF3. Regulates the alternative splicing of tissue factor (F3) pre-mRNA in endothelial cells. Phosphorylates PAGE4 at several serine and threonine residues and this phosphorylation attenuates the ability of PAGE4 to potentiate the transcriptional activator activity of JUN (PubMed:28289210).

Cellular Location

Nucleus. [Isoform 2]: Nucleus speckle. Note=Co-localizes with serine- and arginine-rich (SR) proteins in the nuclear speckles

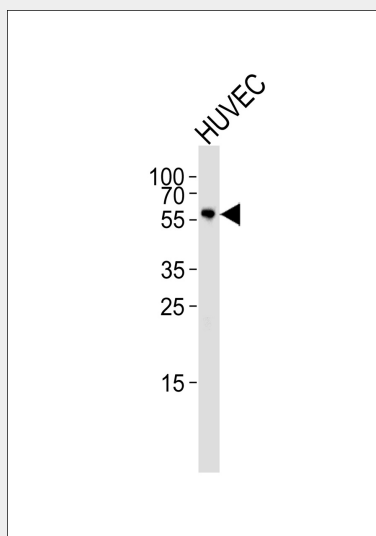
Tissue Location

Endothelial cells (PubMed:19168442). Expressed in androgen-dependent prostate cancer cells (PubMed:28289210)

CLK2 Antibody - Protocols

Provided below are standard protocols that you may find useful for product applications.

- [Western Blot](#)
- [Blocking Peptides](#)
- [Dot Blot](#)
- [Immunohistochemistry](#)
- [Immunofluorescence](#)
- [Immunoprecipitation](#)
- [Flow Cytometry](#)
- [Cell Culture](#)

CLK2 Antibody - Images

Western blot analysis of lysate from HUVEC cell line, using CLK2 Antibody (AP50695). AP50695 was diluted at 1:1000. A goat anti-rabbit IgG H&L (HRP) at 1:5000 dilution was used as the secondary antibody. Lysate at 35ug.

CLK2 Antibody - Background

Dual specificity kinase acting on both serine/threonine and tyrosine-containing substrates. Phosphorylates serine- and arginine-rich (SR) proteins of the spliceosomal complex. May be a constituent of a network of regulatory mechanisms that enable SR proteins to control RNA splicing and can cause redistribution of SR proteins from speckles to a diffuse nucleoplasmic distribution. Acts as a suppressor of hepatic gluconeogenesis and glucose output by repressing PPARGC1A transcriptional activity on gluconeogenic genes via its phosphorylation. Phosphorylates PPP2R5B thereby stimulating the assembly of PP2A phosphatase with the PPP2R5B-AKT1 complex leading to dephosphorylation of AKT1. Phosphorylates: PTPN1, SRSF1 and SRSF3. Regulates the alternative

splicing of tissue factor (F3) pre-mRNA in endothelial cells.

CLK2 Antibody - References

Hanes J.J.,et al.J. Mol. Biol. 244:665-672(1994).
Winfield S.L.,et al.Genome Res. 7:1020-1026(1997).
Gregory S.G.,et al.Nature 441:315-321(2006).
Lee K.,et al.J. Biol. Chem. 271:27299-27303(1996).
Duncan P.I.,et al.Exp. Cell Res. 241:300-308(1998).