

**KIF4A Antibody**  
**Purified Rabbit Polyclonal Antibody (Pab)**  
**Catalog # AP50702****Specification**

---

**KIF4A Antibody - Product Information**

Application	WB
Primary Accession	<a href="#">O95239</a>
Reactivity	Human
Host	Rabbit
Clonality	Polyclonal
Calculated MW	140-128 KDa
Antigen Region	1190-1214

**KIF4A Antibody - Additional Information****Gene ID** 24137**Other Names**

Chromosome-associated kinesin KIF4A, Chromokinesin-A, KIF4A, KIF4

**Dilution**

WB~~1:1000

**Format**Rabbit IgG in phosphate buffered saline (without Mg<sup>2+</sup> and Ca<sup>2+</sup>), pH 7.4, 150mM NaCl, 0.09% (W/V) sodium azide and 50% glycerol.**Storage Conditions**

-20°C

**KIF4A Antibody - Protein Information****Name** KIF4A**Synonyms** KIF4**Function**

Iron-sulfur (Fe-S) cluster binding motor protein that has a role in chromosome segregation during mitosis (PubMed: [29848660](http://www.uniprot.org/citations/29848660)). Translocates PRC1 to the plus ends of interdigitating spindle microtubules during the metaphase to anaphase transition, an essential step for the formation of an organized central spindle midzone and midbody and for successful cytokinesis (PubMed: [15297875](http://www.uniprot.org/citations/15297875), PubMed: [15625105](http://www.uniprot.org/citations/15625105)). May play a role in mitotic chromosomal positioning and bipolar spindle stabilization (By similarity).

**Cellular Location**

Nucleus matrix. Cytoplasm. Cytoplasm, cytoskeleton, spindle Midbody Chromosome.  
Note=Associates with chromosomes at all stage of mitosis (PubMed:11736643, PubMed:15297875, PubMed:15625105) Chromatin localization is dependent on iron-sulfur cluster binding (PubMed:29848660). In anaphase, associates with the mitotic spindle midzone (PubMed:15297875). In telophase and cytokinesis, co-localizes with CIAO2B at the spindle midzone and midbody (PubMed:29848660, PubMed:15297875). Co-localizes with PRC1 in early mitosis and at the spindle midzone from anaphase B to telophase (PubMed:15297875, PubMed:15625105). Does not localize to the nucleolus (PubMed:11736643)

#### **Tissue Location**

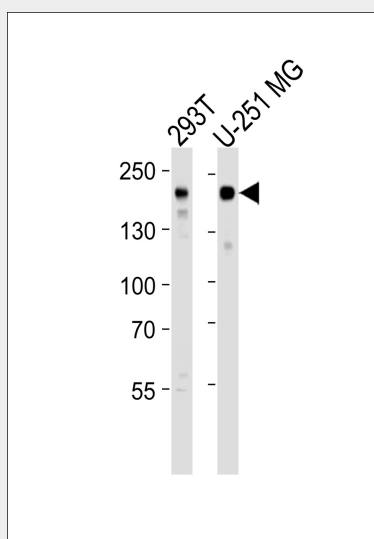
Highly expressed in hematopoietic tissues, fetal liver, spleen, thymus and adult thymus and bone marrow. Lower levels are found in heart, testis, kidney, colon and lung

#### **KIF4A Antibody - Protocols**

Provided below are standard protocols that you may find useful for product applications.

- [Western Blot](#)
- [Blocking Peptides](#)
- [Dot Blot](#)
- [Immunohistochemistry](#)
- [Immunofluorescence](#)
- [Immunoprecipitation](#)
- [Flow Cytometry](#)
- [Cell Culture](#)

#### **KIF4A Antibody - Images**



Western blot analysis of lysates from 293T,U-251 MG cell line (from left to right),using KIF4A Antibody(AP50702). AP50702 was diluted at 1:1000 at each lane. A goat anti-rabbit IgG H&L(HRP) at 1:5000 dilution was used as the secondary antibody.Lysates at 35ug per lane.

#### **KIF4A Antibody - Background**

Motor protein that translocates PRC1 to the plus ends of interdigitating spindle microtubules during the metaphase to anaphase transition, an essential step for the formation of an organized central spindle midzone and midbody and for successful cytokinesis. May play a role in mitotic

chromosomal positioning and bipolar spindle stabilization.

#### **KIF4A Antibody - References**

Villard L.,et al.Submitted (AUG-1999) to the EMBL/GenBank/DDBJ databases.  
Oh S.J.,et al.Biochim. Biophys. Acta 1493:219-224(2000).  
Rentsch A.,et al.Submitted (FEB-2000) to the EMBL/GenBank/DDBJ databases.  
Ota T.,et al.Nat. Genet. 36:40-45(2004).  
Ross M.T.,et al.Nature 434:325-337(2005).