

EEF1B2 Antibody
Purified Rabbit Polyclonal Antibody (Pab)
Catalog # AP50716**Specification**

EEF1B2 Antibody - Product Information

Application	WB
Primary Accession	P24534
Reactivity	Human, Mouse, Rat
Host	Rabbit
Clonality	Polyclonal
Calculated MW	25 KDa
Antigen Region	103-163

EEF1B2 Antibody - Additional Information**Gene ID** 1933**Other Names**

Elongation factor 1-beta, EF-1-beta, EEF1B2, EEF1B, EF1B

Target/Specificity

KLH-conjugated synthetic peptide encompassing a sequence within the center region of human EEF1B2. The exact sequence is proprietary.

Dilution

WB~~ 1:500-1:1000

Storage

Store at -20 °C. Stable for 12 months from date of receipt

EEF1B2 Antibody - Protein Information**Name** EEF1B2**Synonyms** EEF1B, EF1B**Function**

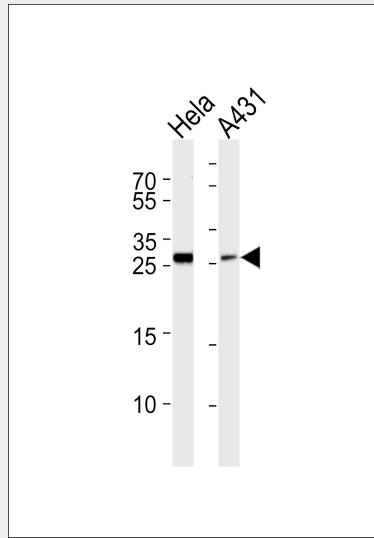
Catalytic subunit of the guanine nucleotide exchange factor (GEF) (eEF1B subcomplex) of the eukaryotic elongation factor 1 complex (eEF1) (By similarity). Stimulates the exchange of GDP for GTP on elongation factor 1A (eEF1A), probably by displacing GDP from the nucleotide binding pocket in eEF1A (By similarity).

EEF1B2 Antibody - Protocols

Provided below are standard protocols that you may find useful for product applications.

- [Western Blot](#)
- [Blocking Peptides](#)
- [Dot Blot](#)
- [Immunohistochemistry](#)
- [Immunofluorescence](#)
- [Immunoprecipitation](#)
- [Flow Cytometry](#)
- [Cell Culture](#)

EEF1B2 Antibody - Images



Western blot analysis of lysates from HeLa, A431 cell line (from left to right), using EEF1B2 Antibody was diluted at 1:500-1:1000 at each lane. A goat anti-rabbit IgG H&L(HRP) at 1:5000 dilution was used as the secondary antibody. Lysates at 35ug per lane.

EEF1B2 Antibody - Background

EF-1-beta and EF-1-delta stimulate the exchange of GDP bound to EF-1-alpha to GTP.

EEF1B2 Antibody - References

- Sanders J., et al. *Nucleic Acids Res.* 19:4551-4551(1991).
von der Kammer H., et al. *Biochem. Biophys. Res. Commun.* 177:312-317(1991).
Kalnina N., et al. Submitted (MAY-2003) to the EMBL/GenBank/DDBJ databases.
Ebert L., et al. Submitted (JUN-2004) to the EMBL/GenBank/DDBJ databases.
Ota T., et al. *Nat. Genet.* 36:40-45(2004).