

**IFNW1 Antibody**  
**Purified Rabbit Polyclonal Antibody (Pab)**  
**Catalog # AP50726**

**Specification**

---

**IFNW1 Antibody - Product Information**

Application	WB
Primary Accession	<a href="#">P05000</a>
Reactivity	Human, Mouse, Rat
Host	Rabbit
Clonality	Polyclonal
Calculated MW	22 KDa
Antigen Region	31-91

**IFNW1 Antibody - Additional Information**

**Gene ID** 3467

**Other Names**

Interferon omega-1, Interferon alpha-II-1, IFNW1

**Dilution**

WB~~ 1:1000

**Format**

0.01M PBS, pH 7.2, 0.09% (W/V) Sodium azide, Glycerol 50%

**Storage**

Store at -20 °C. Stable for 12 months from date of receipt

**IFNW1 Antibody - Protein Information**

**Name** IFNW1

**Cellular Location**

Secreted.

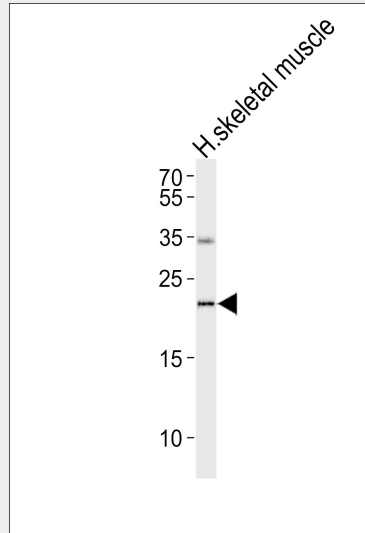
**IFNW1 Antibody - Protocols**

Provided below are standard protocols that you may find useful for product applications.

- [Western Blot](#)
- [Blocking Peptides](#)
- [Dot Blot](#)
- [Immunohistochemistry](#)
- [Immunofluorescence](#)

- [Immunoprecipitation](#)
- [Flow Cytometry](#)
- [Cell Culture](#)

### IFNW1 Antibody - Images



Western blot analysis of lysate from human skeletal muscle tissue lysate, using IFNW1 Antibody was diluted at 1:1000. A goat anti-rabbit IgG H&L(HRP) at 1:5000 dilution was used as the secondary antibody. Lysate at 35ug.

### IFNW1 Antibody - References

- Capon D.J., et al. Mol. Cell. Biol. 5:768-779(1985).  
Adolf G.R., et al. Biochim. Biophys. Acta 1089:167-174(1991).  
Humphray S.J., et al. Nature 429:369-374(2004).  
Mural R.J., et al. Submitted (JUL-2005) to the EMBL/GenBank/DDBJ databases.  
Hauptmann R., et al. Nucleic Acids Res. 13:4739-4749(1985).