

**PDCD1 Antibody**  
**Purified Rabbit Polyclonal Antibody (Pab)**  
**Catalog # AP50734****Specification**

---

**PDCD1 Antibody - Product Information**

Application	WB
Primary Accession	<a href="#">Q15116</a>
Reactivity	Human, Mouse, Rat
Host	Rabbit
Clonality	Polyclonal
Calculated MW	32 KDa
Antigen Region	123-183

**PDCD1 Antibody - Additional Information****Gene ID** 5133**Other Names**

Programmed cell death protein 1, Protein PD-1, hPD-1, CD279, PDCD1, PD1

**Target/Specificity**

KLH-conjugated synthetic peptide encompassing a sequence within the center region of human CD279. The exact sequence is proprietary.

**Dilution**

WB~~ 1:1000

**Storage**

Store at -20 °C.Stable for 12 months from date of receipt

**PDCD1 Antibody - Protein Information****Name** PDCD1 {ECO:0000303|PubMed:7851902, ECO:0000312|HGNC:HGNC:8760}**Function**

Inhibitory receptor on antigen activated T-cells that plays a critical role in induction and maintenance of immune tolerance to self (PubMed:<a href="http://www.uniprot.org/citations/21276005" target="\_blank">21276005</a>, PubMed:<a href="http://www.uniprot.org/citations/37208329" target="\_blank">37208329</a>). Delivers inhibitory signals upon binding to ligands CD274/PDCD1L1 and CD273/PDCD1LG2 (PubMed:<a href="http://www.uniprot.org/citations/21276005" target="\_blank">21276005</a>). Following T-cell receptor (TCR) engagement, PDCD1 associates with CD3- TCR in the immunological synapse and directly inhibits T-cell activation (By similarity). Suppresses T-cell activation through the recruitment of PTPN11/SHP-2: following ligand-binding, PDCD1 is phosphorylated within the ITSM motif, leading to the recruitment of the protein tyrosine phosphatase PTPN11/SHP-2 that mediates dephosphorylation of key TCR proximal signaling molecules, such as ZAP70, PRKCQ/PKCtheta and CD247/CD3zeta (By similarity).

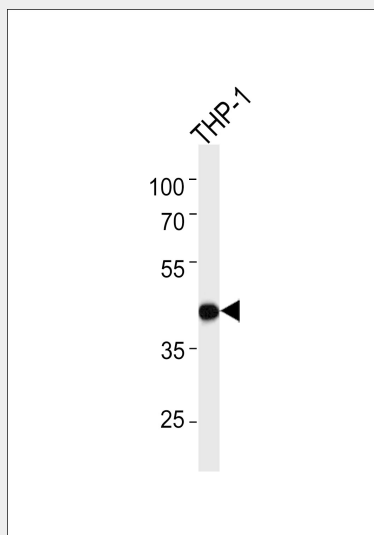
**Cellular Location**

Cell membrane; Single-pass type I membrane protein

**PDCD1 Antibody - Protocols**

Provided below are standard protocols that you may find useful for product applications.

- [Western Blot](#)
- [Blocking Peptides](#)
- [Dot Blot](#)
- [Immunohistochemistry](#)
- [Immunofluorescence](#)
- [Immunoprecipitation](#)
- [Flow Cytometry](#)
- [Cell Culture](#)

**PDCD1 Antibody - Images**

Western blot analysis of lysate from THP-1 cell line, using PDCD1 Antibody was diluted at 1:1000. A goat anti-rabbit IgG H&L(HRP) at 1:5000 dilution was used as the secondary antibody. Lysate at 35ug.

**PDCD1 Antibody - Background**

Inhibitory cell surface receptor involved in the regulation of T-cell function during immunity and tolerance. Upon ligand binding, inhibits T-cell effector functions in an antigen-specific manner. Possible cell death inducer, in association with other factors.

**PDCD1 Antibody - References**

Shinohara T., et al. Genomics 23:704-706(1994).  
Finger L.R., et al. Gene 197:177-187(1997).  
Finger L.R., et al. Gene 203:253-253(1997).  
Prokunina L., et al. Nat. Genet. 32:666-669(2002).  
He X., et al. Submitted (FEB-2003) to the EMBL/GenBank/DDBJ databases.