

RTP2 Antibody (Center)
Affinity Purified Rabbit Polyclonal Antibody (Pab)
Catalog # AP5073C

Specification

RTP2 Antibody (Center) - Product Information

Application	WB,E
Primary Accession	Q5QGT7
Reactivity	Human, Mouse
Host	Rabbit
Clonality	Polyclonal
Isotype	Rabbit IgG
Calculated MW	26068
Antigen Region	122-151

RTP2 Antibody (Center) - Additional Information

Gene ID 344892

Other Names

Receptor-transporting protein 2, RTP2

Target/Specificity

This RTP2 antibody is generated from rabbits immunized with a KLH conjugated synthetic peptide between 122-151 amino acids from the Central region of human RTP2.

Dilution

WB~~1:1000

E~~Use at an assay dependent concentration.

Format

Purified polyclonal antibody supplied in PBS with 0.09% (W/V) sodium azide. This antibody is purified through a protein A column, followed by peptide affinity purification.

Storage

Maintain refrigerated at 2-8°C for up to 2 weeks. For long term storage store at -20°C in small aliquots to prevent freeze-thaw cycles.

Precautions

RTP2 Antibody (Center) is for research use only and not for use in diagnostic or therapeutic procedures.

RTP2 Antibody (Center) - Protein Information

Name RTP2

Synonyms Z3CXXC2

Function Specifically promotes functional cell surface expression of olfactory receptors, but not of other GPCRs.

Cellular Location

Cell membrane; Single-pass type III membrane protein. Note=Effective cell surface expression depends upon interaction with olfactory receptors.

Tissue Location

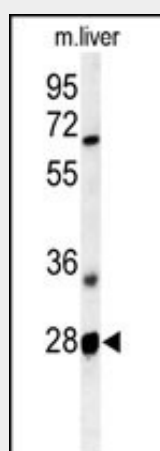
Expressed in circumvallate papillae and testis.

RTP2 Antibody (Center) - Protocols

Provided below are standard protocols that you may find useful for product applications.

- [Western Blot](#)
- [Blocking Peptides](#)
- [Dot Blot](#)
- [Immunohistochemistry](#)
- [Immunofluorescence](#)
- [Immunoprecipitation](#)
- [Flow Cytometry](#)
- [Cell Culture](#)

RTP2 Antibody (Center) - Images



Western blot analysis of RTP2 Antibody (Center) (Cat. #AP5073c) in mouse liver tissue lysates (35ug/lane). RTP2 (arrow) was detected using the purified Pab.

RTP2 Antibody (Center) - Background

RTP2 specifically promotes functional cell surface expression of olfactory receptors, but not of other GPCRs.

RTP2 Antibody (Center) - References

Behrens, M., et al. J. Biol. Chem. 281(29):20650-20659(2006)
Clark, A.J., et al. Trends Endocrinol. Metab. 16(10):451-457(2005)
Saito, H., et al. Cell 119(5):679-691(2004)