

CDH17 Antibody
Purified Rabbit Polyclonal Antibody (Pab)
Catalog # AP50744**Specification**

CDH17 Antibody - Product Information

Application	WB, IF
Primary Accession	Q12864
Reactivity	Human
Host	Rabbit
Clonality	Polyclonal
Calculated MW	92(abcam,120kd) KDa
Antigen Region	356-384

CDH17 Antibody - Additional Information**Gene ID** 1015**Other Names**

Cadherin-17, Intestinal peptide-associated transporter HPT-1, Liver-intestine cadherin, LI-cadherin, CDH17

Dilution

WB~~1:1000

IF~~1:100

FormatRabbit IgG in phosphate buffered saline (without Mg²⁺ and Ca²⁺), pH 7.4, 150mM NaCl, 0.09% (W/V) sodium azide and 50% glycerol.**Storage Conditions**

-20°C

CDH17 Antibody - Protein Information**Name** CDH17**Function**

Cadherins are calcium-dependent cell adhesion proteins. They preferentially interact with themselves in a homophilic manner in connecting cells; cadherins may thus contribute to the sorting of heterogeneous cell types. LI-cadherin may have a role in the morphological organization of liver and intestine. Involved in intestinal peptide transport.

Cellular Location

Cell membrane; Single-pass type I membrane protein

Tissue Location

Expressed in the gastrointestinal tract and pancreatic duct. Not detected in kidney, lung, liver,

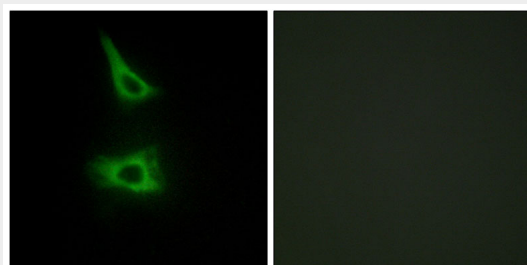
brain, adrenal gland and skin.

CDH17 Antibody - Protocols

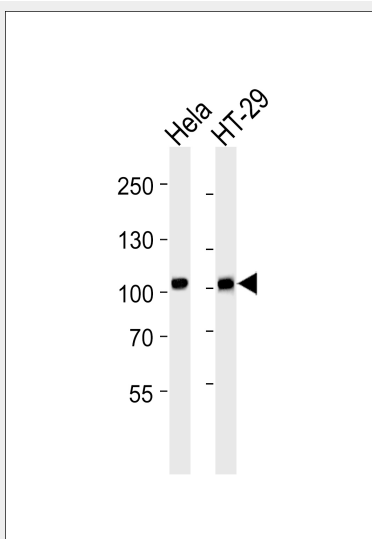
Provided below are standard protocols that you may find useful for product applications.

- [Western Blot](#)
- [Blocking Peptides](#)
- [Dot Blot](#)
- [Immunohistochemistry](#)
- [Immunofluorescence](#)
- [Immunoprecipitation](#)
- [Flow Cytometry](#)
- [Cell Culture](#)

CDH17 Antibody - Images



Immunofluorescence analysis of HeLa cells, using CDH17 antibody.



Western blot analysis of lysates from HeLa, HT-29 cell line (from left to right), using CDH17 Antibody (AP50744). AP50744 was diluted at 1:1000 at each lane. A goat anti-rabbit IgG H&L (HRP) at 1:5000 dilution was used as the secondary antibody. Lysates at 35 µg per lane.

CDH17 Antibody - Background

Cadherins are calcium-dependent cell adhesion proteins. They preferentially interact with themselves in a homophilic manner in connecting cells; cadherins may thus contribute to the sorting of heterogeneous cell types. LI-cadherin may have a role in the morphological organization

of liver and intestine. Involved in intestinal peptide transport.

CDH17 Antibody - References

Dantzig A.H.,et al.Science 264:430-433(1994).

Boettinger A.,et al.Submitted (DEC-1994) to the EMBL/GenBank/DDBJ databases.

Nusbaum C.,et al.Nature 439:331-335(2006).