

**PSMC6 Antibody**  
**Purified Rabbit Polyclonal Antibody (Pab)**  
**Catalog # AP50752**

**Specification**

---

**PSMC6 Antibody - Product Information**

Application	WB
Primary Accession	<a href="#">P62333</a>
Reactivity	Human, Mouse
Host	Rabbit
Clonality	Polyclonal
Calculated MW	44 KDa
Antigen Region	75-103

**PSMC6 Antibody - Additional Information**

**Gene ID** 5706

**Other Names**

26S protease regulatory subunit 10B, 26S proteasome AAA-ATPase subunit RPT4, Proteasome 26S subunit ATPase 6, Proteasome subunit p42, PSMC6, SUG2

**Dilution**

WB~~1:1000

**Format**

Rabbit IgG in phosphate buffered saline (without Mg<sup>2+</sup> and Ca<sup>2+</sup>), pH 7.4, 150mM NaCl, 0.09% (W/V) sodium azide and 50% glycerol.

**Storage Conditions**

-20°C

**PSMC6 Antibody - Protein Information**

**Name** PSMC6

**Synonyms** SUG2

**Function**

Component of the 26S proteasome, a multiprotein complex involved in the ATP-dependent degradation of ubiquitinated proteins. This complex plays a key role in the maintenance of protein homeostasis by removing misfolded or damaged proteins, which could impair cellular functions, and by removing proteins whose functions are no longer required. Therefore, the proteasome participates in numerous cellular processes, including cell cycle progression, apoptosis, or DNA damage repair. PSMC6 belongs to the heterohexameric ring of AAA (ATPases associated with diverse cellular activities) proteins that unfolds ubiquitinated target proteins that are concurrently translocated into a proteolytic chamber and degraded into peptides.

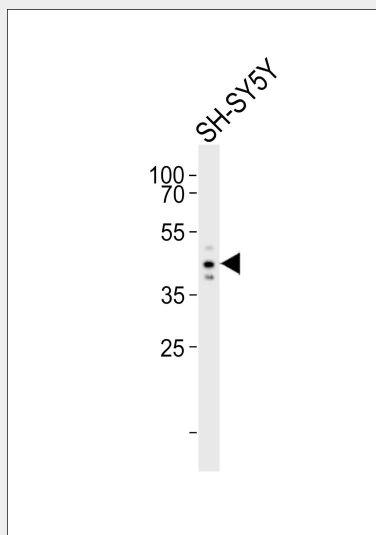
**Cellular Location**

Cytoplasm. Nucleus.

**PSMC6 Antibody - Protocols**

Provided below are standard protocols that you may find useful for product applications.

- [Western Blot](#)
- [Blocking Peptides](#)
- [Dot Blot](#)
- [Immunohistochemistry](#)
- [Immunofluorescence](#)
- [Immunoprecipitation](#)
- [Flow Cytometry](#)
- [Cell Culture](#)

**PSMC6 Antibody - Images**

Western blot analysis of lysate from SH-SY5Y cell line, using PSMC6 Antibody (AP50752). AP50752 was diluted at 1:1000. A goat anti-rabbit IgG H&L (HRP) at 1:5000 dilution was used as the secondary antibody. Lysate at 35 µg.

**PSMC6 Antibody - Background**

The 26S protease is involved in the ATP-dependent degradation of ubiquitinated proteins. The regulatory (or ATPase) complex confers ATP dependency and substrate specificity to the 26S complex.

**PSMC6 Antibody - References**

- Fujiwara T., et al. FEBS Lett. 387:184-188 (1996).  
Li Y., et al. Submitted (MAY-1997) to the EMBL/GenBank/DDBJ databases.  
Kalnine N., et al. Submitted (MAY-2003) to the EMBL/GenBank/DDBJ databases.  
Ebert L., et al. Submitted (JUN-2004) to the EMBL/GenBank/DDBJ databases.  
Ota T., et al. Nat. Genet. 36:40-45 (2004).