

PSMD2 Antibody
Purified Rabbit Polyclonal Antibody (Pab)
Catalog # AP50754

Specification

PSMD2 Antibody - Product Information

Application	WB
Primary Accession	Q13200
Reactivity	Human, Mouse, Rat
Host	Rabbit
Clonality	Polyclonal
Calculated MW	100 KDa
Antigen Region	25-53

PSMD2 Antibody - Additional Information

Gene ID 5708

Other Names

26S proteasome non-ATPase regulatory subunit 2, 26S proteasome regulatory subunit RPN1, 26S proteasome regulatory subunit S2, 26S proteasome subunit p97, Protein 5511, Tumor necrosis factor type 1 receptor-associated protein 2, PSMD2, TRAP2

Dilution

WB~~1:1000

Format

Rabbit IgG in phosphate buffered saline (without Mg²⁺ and Ca²⁺), pH 7.4, 150mM NaCl, 0.09% (W/V) sodium azide and 50% glycerol.

Storage Conditions

-20°C

PSMD2 Antibody - Protein Information

Name PSMD2

Synonyms TRAP2

Function

Component of the 26S proteasome, a multiprotein complex involved in the ATP-dependent degradation of ubiquitinated proteins. This complex plays a key role in the maintenance of protein homeostasis by removing misfolded or damaged proteins, which could impair cellular functions, and by removing proteins whose functions are no longer required. Therefore, the proteasome participates in numerous cellular processes, including cell cycle progression, apoptosis, or DNA damage repair.

Tissue Location

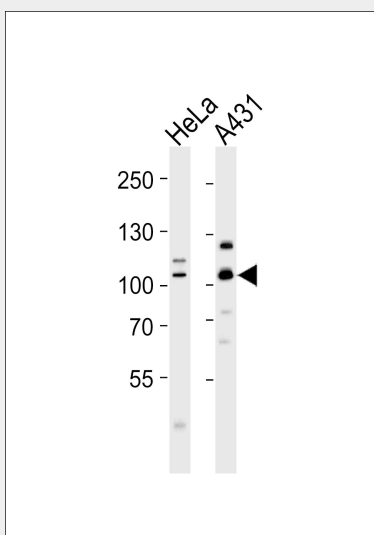
Found in skeletal muscle, liver, heart, brain, kidney, pancreas, lung and placenta

PSMD2 Antibody - Protocols

Provided below are standard protocols that you may find useful for product applications.

- [Western Blot](#)
- [Blocking Peptides](#)
- [Dot Blot](#)
- [Immunohistochemistry](#)
- [Immunofluorescence](#)
- [Immunoprecipitation](#)
- [Flow Cytometry](#)
- [Cell Culture](#)

PSMD2 Antibody - Images



Western blot analysis of lysates from HeLa, A431 cell line (from left to right), using PSMD2 Antibody (AP50754). AP50754 was diluted at 1:1000 at each lane. A goat anti-rabbit IgG H&L (HRP) at 1:5000 dilution was used as the secondary antibody. Lysates at 35 µg per lane.

PSMD2 Antibody - Background

Acts as a regulatory subunit of the 26 proteasome which is involved in the ATP-dependent degradation of ubiquitinated proteins.

PSMD2 Antibody - References

Tsurumi C., et al. Eur. J. Biochem. 239:912-921 (1996).
Kalnine N., et al. Submitted (AUG-2003) to the EMBL/GenBank/DDBJ databases.
Dunbar J.D., et al. J. Immunol. 158:4252-4259 (1997).
Boldin M.P., et al. FEBS Lett. 367:39-44 (1995).
Olsen J.V., et al. Cell 127:635-648 (2006).