

SEMA3C Antibody (C-term)
Affinity Purified Rabbit Polyclonal Antibody (Pab)
Catalog # AP5075b**Specification**

SEMA3C Antibody (C-term) - Product Information

Application	WB,E
Primary Accession	Q99985
Other Accession	Q62181 , A7MB70
Reactivity	Human, Mouse
Predicted	Bovine
Host	Rabbit
Clonality	Polyclonal
Isotype	Rabbit IgG
Calculated MW	85207
Antigen Region	592-620

SEMA3C Antibody (C-term) - Additional Information**Gene ID** 10512**Other Names**

Semaphorin-3C, Semaphorin-E, Sema E, SEMA3C, SEMAE

Target/Specificity

This SEMA3C antibody is generated from rabbits immunized with a KLH conjugated synthetic peptide between 592-620 amino acids from the C-terminal region of human SEMA3C.

Dilution

WB~~1:1000

Format

Purified polyclonal antibody supplied in PBS with 0.09% (W/V) sodium azide. This antibody is purified through a protein A column, followed by peptide affinity purification.

Storage

Maintain refrigerated at 2-8°C for up to 2 weeks. For long term storage store at -20°C in small aliquots to prevent freeze-thaw cycles.

Precautions

SEMA3C Antibody (C-term) is for research use only and not for use in diagnostic or therapeutic procedures.

SEMA3C Antibody (C-term) - Protein Information**Name** SEMA3C**Synonyms** SEMAE

Function Binds to plexin family members and plays an important role in the regulation of developmental processes. Required for normal cardiovascular development during embryogenesis. Functions as attractant for growing axons, and thereby plays an important role in axon growth and axon guidance (By similarity).

Cellular Location

Secreted.

Tissue Location

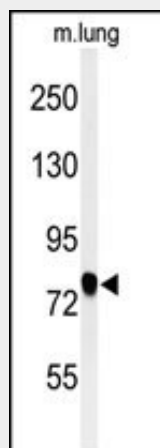
Expressed intensely in the heart, skeletal muscle, colon, small intestine, ovary, testis, and prostate. Faint expression ubiquitously among other organs, including brain

SEMA3C Antibody (C-term) - Protocols

Provided below are standard protocols that you may find useful for product applications.

- [Western Blot](#)
- [Blocking Peptides](#)
- [Dot Blot](#)
- [Immunohistochemistry](#)
- [Immunofluorescence](#)
- [Immunoprecipitation](#)
- [Flow Cytometry](#)
- [Cell Culture](#)

SEMA3C Antibody (C-term) - Images



Western blot analysis of SEMA3C Antibody (C-term) (Cat. #AP5075b) in mouse lung tissue lysates (35ug/lane). SEMA3C (arrow) was detected using the purified Pab.

SEMA3C Antibody (C-term) - Background

SEMA3C may be involved in diverse cell survival mechanisms.

SEMA3C Antibody (C-term) - References

Esselens, C., et al. J. Biol. Chem. 285(4):2463-2473(2010)
Kodo, K., et al. Proc. Natl. Acad. Sci. U.S.A. 106(33):13933-13938(2009)
Johnson, A.D., et al. Hum. Mol. Genet. 18(14):2700-2710(2009)