

**CDCA2 Antibody**  
**Purified Rabbit Polyclonal Antibody (Pab)**  
**Catalog # AP50761****Specification**

---

**CDCA2 Antibody - Product Information**

Application	WB
Primary Accession	<a href="#">Q69YH5</a>
Reactivity	Human
Host	Rabbit
Clonality	Polyclonal
Calculated MW	113,7 KDa
Antigen Region	520-551

**CDCA2 Antibody - Additional Information****Gene ID** 157313**Other Names**

Cell division cycle-associated protein 2, Recruits PP1 onto mitotic chromatin at anaphase protein, Repo-Man, CDCA2

**Dilution**

WB~~ 1:1000

**Format**

Rabbit IgG in phosphate buffered saline (without Mg<sup>2+</sup> and Ca<sup>2+</sup>), pH 7.4, 150mM NaCl, 0.09% (W/V) sodium azide and 50% glycerol.

**Storage Conditions**

-20°C

**CDCA2 Antibody - Protein Information****Name** CDCA2**Function**

Regulator of chromosome structure during mitosis required for condensin-depleted chromosomes to retain their compact architecture through anaphase. Acts by mediating the recruitment of phosphatase PP1-gamma subunit (PPP1CC) to chromatin at anaphase and into the following interphase. At anaphase onset, its association with chromatin targets a pool of PPP1CC to dephosphorylate substrates.

**Cellular Location**

Nucleus. Note=Excluded from the nucleolus. Present in nucleoplasm throughout the G1, S and G2 stages of the cell cycle. During M phase, it becomes diffuse throughout the cell as the nuclear membrane breaks down, and faintly accumulates later on metaphase chromatin. As the cell progresses to anaphase, it accumulates on chromatin

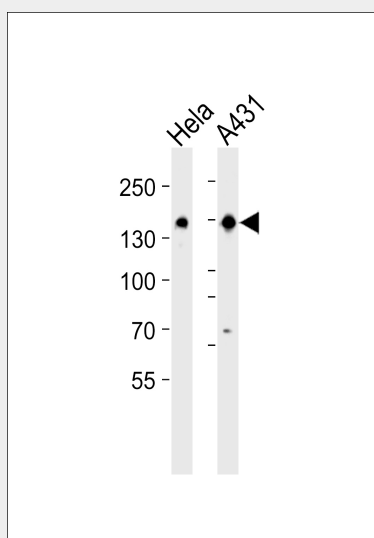
**Tissue Location**

Ubiquitously expressed.

**CDCA2 Antibody - Protocols**

Provided below are standard protocols that you may find useful for product applications.

- [Western Blot](#)
- [Blocking Peptides](#)
- [Dot Blot](#)
- [Immunohistochemistry](#)
- [Immunofluorescence](#)
- [Immunoprecipitation](#)
- [Flow Cytometry](#)
- [Cell Culture](#)

**CDCA2 Antibody - Images**

Western blot analysis of lysates from HeLa, A431 cell line (from left to right), using CDCA2 Antibody (AP50761). AP50761 was diluted at 1:1000 at each lane. A goat anti-rabbit IgG H&L (HRP) at 1:5000 dilution was used as the secondary antibody. Lysates at 35 µg per lane.

**CDCA2 Antibody - Background**

Regulator of chromosome structure during mitosis required for condensin-depleted chromosomes to retain their compact architecture through anaphase. Acts by mediating the recruitment of phosphatase PP1-gamma subunit (PPP1CC) to chromatin at anaphase and into the following interphase. At anaphase onset, its association with chromatin targets a pool of PPP1CC to dephosphorylate substrates.

**CDCA2 Antibody - References**

- Bechtel S., et al. BMC Genomics 8:399-399(2007).  
Nusbaum C., et al. Nature 439:331-335(2006).  
Walker M.G., et al. Curr. Cancer Drug Targets 1:73-83(2001).  
Ota T., et al. Nat. Genet. 36:40-45(2004).  
Olsen J.V., et al. Cell 127:635-648(2006).

