

OPN5 Antibody
Purified Rabbit Polyclonal Antibody (Pab)
Catalog # AP50765**Specification**

OPN5 Antibody - Product Information

Application	WB, IF
Primary Accession	Q6U736
Reactivity	Human, Mouse
Host	Rabbit
Clonality	Polyclonal
Calculated MW	40 KDa
Antigen Region	270-299

OPN5 Antibody - Additional Information**Gene ID** 221391**Other Names**

Opsin-5, G-protein coupled receptor 136, G-protein coupled receptor PGR12, Neuropsin, Transmembrane protein 13, OPN5, GPR136, PGR12, TMEM13

Dilution

WB~~ 1:1000

IF~~1:100

Format

Rabbit IgG in phosphate buffered saline (without Mg²⁺ and Ca²⁺), pH 7.4, 150mM NaCl, 0.09% (W/V) sodium azide and 50% glycerol.

Storage Conditions

-20°C

OPN5 Antibody - Protein Information**Name** OPN5**Synonyms** GPR136, PGR12, TMEM13**Function**

G-protein coupled receptor which selectively activates G(i) type G proteins via ultraviolet A (UVA) light-mediated activation in the retina (By similarity). Preferentially binds the chromophore 11-cis retinal and is a bistable protein that displays emission peaks at 380 nm (UVA light) and 470 nm (blue light) (PubMed:22043319). Required for the light-response in the inner plexiform layer, and contributes to the regulation of the light-response in the nerve fiber layer, via phosphorylated DAT/SLC6A3 dopamine uptake (By similarity). Involved in local corneal and retinal circadian rhythm photoentrainment via modulation of the UVA light-induced phase-shift of the retina clock

(By similarity). Acts as a circadian photoreceptor in the outer ear, via modulation of circadian clock-gene expression in response to violet light during the light-to-dark transition phase and night phase of the circadian cycle (By similarity). Required in the retina to negatively regulate hyaloid vessel regression during postnatal development via light-dependent OPN5-SLC32A1-DRD2-VEGFR2 signaling (By similarity). Involved in the light-dependent regulation of retina and vitreous compartment dopamine levels (By similarity).

Cellular Location

Cell membrane; Multi-pass membrane protein

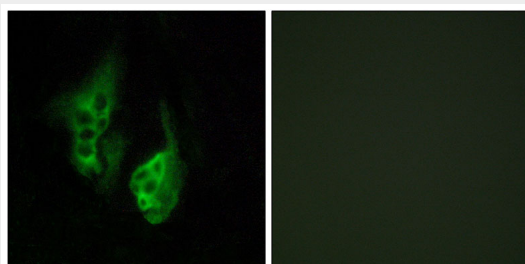
Tissue Location

Detected in brain and retina and cell lines derived from neural retina.

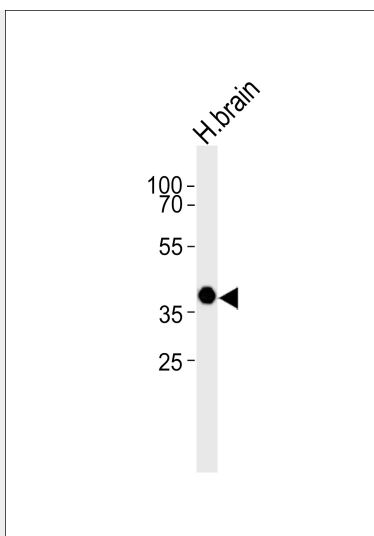
OPN5 Antibody - Protocols

Provided below are standard protocols that you may find useful for product applications.

- [Western Blot](#)
- [Blocking Peptides](#)
- [Dot Blot](#)
- [Immunohistochemistry](#)
- [Immunofluorescence](#)
- [Immunoprecipitation](#)
- [Flow Cytometry](#)
- [Cell Culture](#)

OPN5 Antibody - Images

Immunofluorescence analysis of HeLa cells, using OPN5 antibody.



Western blot analysis of lysate from human brain tissue lysate, using OPN5 Antibody (AP50765). AP50765 was diluted at 1:1000. A goat anti-rabbit IgG H&L (HRP) at 1:5000 dilution was used as the secondary antibody. Lysate at 35 µg.

OPN5 Antibody - References

- Tarttelin E.E., et al. FEBS Lett. 554:410-416 (2003).
Fredriksson R., et al. FEBS Lett. 554:381-388 (2003).
Vassilatis D.K., et al. Proc. Natl. Acad. Sci. U.S.A. 100:4903-4908 (2003).
Mungall A.J., et al. Nature 425:805-811 (2003).