

**GJB7 Antibody**  
**Purified Rabbit Polyclonal Antibody (Pab)**  
**Catalog # AP50767****Specification**

---

**GJB7 Antibody - Product Information**

|                   |                        |
|-------------------|------------------------|
| Application       | WB                     |
| Primary Accession | <a href="#">Q6PEY0</a> |
| Reactivity        | Human                  |
| Host              | Rabbit                 |
| Clonality         | Polyclonal             |
| Calculated MW     | 26 KDa                 |
| Antigen Region    | 35-63                  |

**GJB7 Antibody - Additional Information****Gene ID** 375519**Other Names**

Gap junction beta-7 protein, Connexin-25, Cx25, GJB7, CX25

**Dilution**

WB~~ 1:1000

**Format**Rabbit IgG in phosphate buffered saline (without Mg<sup>2+</sup> and Ca<sup>2+</sup>), pH 7.4, 150mM NaCl, 0.09% (W/V) sodium azide and 50% glycerol.**Storage Conditions**

-20°C

**GJB7 Antibody - Protein Information****Name** GJB7**Synonyms** CX25**Function**

One gap junction consists of a cluster of closely packed pairs of transmembrane channels, the connexons, through which materials of low MW diffuse from one cell to a neighboring cell.

**Cellular Location**

Cell membrane; Multi-pass membrane protein. Cell junction, gap junction

**Tissue Location**

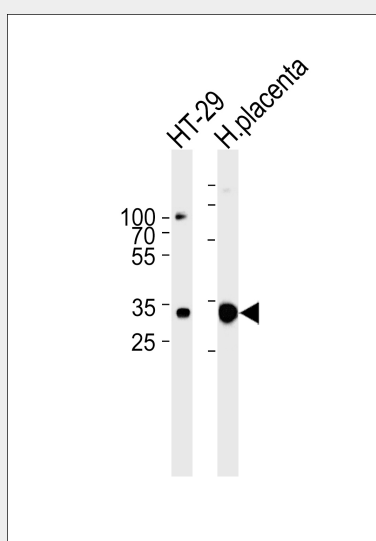
Weakly expressed in placenta.

## GJB7 Antibody - Protocols

Provided below are standard protocols that you may find useful for product applications.

- [Western Blot](#)
- [Blocking Peptides](#)
- [Dot Blot](#)
- [Immunohistochemistry](#)
- [Immunofluorescence](#)
- [Immunoprecipitation](#)
- [Flow Cytometry](#)
- [Cell Culture](#)

## GJB7 Antibody - Images



Western blot analysis of lysates from HT-29 cell line and human placenta tissue lysate (from left to right), using GJB7 Antibody (AP50767). AP50767 was diluted at 1:1000 at each lane. A goat anti-rabbit IgG H&L (HRP) at 1:5000 dilution was used as the secondary antibody. Lysates at 35 µg per lane.

## GJB7 Antibody - Background

One gap junction consists of a cluster of closely packed pairs of transmembrane channels, the connexons, through which materials of low MW diffuse from one cell to a neighboring cell (By similarity).

## GJB7 Antibody - References

- Willecke K., et al. Biol. Chem. 383:725-737(2002).  
Ota T., et al. Nat. Genet. 36:40-45(2004).  
Mungall A.J., et al. Nature 425:805-811(2003).  
Bondarev I., et al. Cell Commun. Adhes. 8:167-171(2001).  
Soehl G., et al. Cell Commun. Adhes. 10:27-36(2003).