

KCNT1 Antibody
Purified Rabbit Polyclonal Antibody (Pab)
Catalog # AP50772**Specification**

KCNT1 Antibody - Product Information

Application	WB, IHC
Primary Accession	Q5JUK3
Reactivity	Human, Mouse, Rat
Host	Rabbit
Clonality	Polyclonal
Calculated MW	138,142,140 KDa
Antigen Region	1035-1061

KCNT1 Antibody - Additional Information**Gene ID** 57582**Other Names**

Potassium channel subfamily T member 1, KCa41, KCNT1, KIAA1422

Dilution

WB~~ 1:1000

IHC~~1:50-100

FormatRabbit IgG in phosphate buffered saline (without Mg²⁺ and Ca²⁺), pH 7.4, 150mM NaCl, 0.09% (W/V) sodium azide and 50% glycerol.**Storage Conditions**

-20°C

KCNT1 Antibody - Protein Information**Name** KCNT1**Synonyms** KIAA1422**Function**

Outwardly rectifying potassium channel subunit that may coassemble with other Slo-type channel subunits. Activated by high intracellular sodium or chloride levels. Activated upon stimulation of G-protein coupled receptors, such as CHRM1 and GRIA1. May be regulated by calcium in the absence of sodium ions (in vitro) (By similarity).

Cellular Location

Cell membrane; Multi-pass membrane protein

Tissue Location

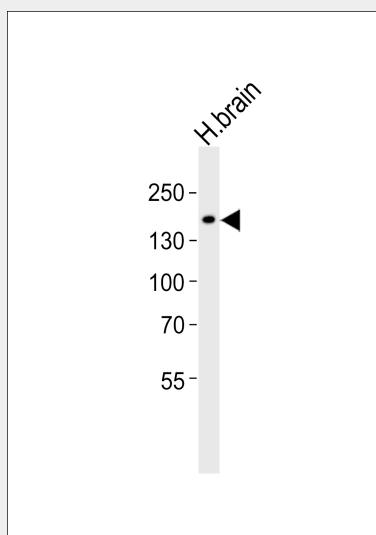
Highest expression in liver, brain and spinal cord. Lowest expression in skeletal muscle.

KCNT1 Antibody - Protocols

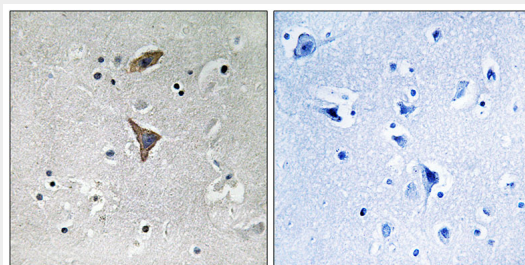
Provided below are standard protocols that you may find useful for product applications.

- [Western Blot](#)
- [Blocking Peptides](#)
- [Dot Blot](#)
- [Immunohistochemistry](#)
- [Immunofluorescence](#)
- [Immunoprecipitation](#)
- [Flow Cytometry](#)
- [Cell Culture](#)

KCNT1 Antibody - Images



Western blot analysis of lysate from human brain tissue lysate, using KCNT1 Antibody (AP50772). AP50772 was diluted at 1:1000. A goat anti-rabbit IgG H&L (HRP) at 1:5000 dilution was used as the secondary antibody. Lysate at 35ug.



Immunohistochemistry analysis of paraffin-embedded human brain tissue using KCNT1 antibody.

KCNT1 Antibody - Background

Outwardly rectifying potassium channel subunit that may coassemble with other Slo-type channel subunits. Activated by high intracellular sodium or chloride levels. Activated upon stimulation of G-protein coupled receptors, such as CHRM1 and GRIA1. May be regulated by calcium in the

absence of sodium ions (in vitro) (By similarity).

KCNT1 Antibody - References

Humphray S.J.,et al.Nature 429:369-374(2004).
Nagase T.,et al.DNA Res. 7:65-73(2000).
Heron S.E.,et al.Nat. Genet. 44:1188-1190(2012).
Barcia G.,et al.Nat. Genet. 44:1255-1259(2012).