

TOR1AIP1 Antibody
Purified Rabbit Polyclonal Antibody (Pab)
Catalog # AP50777**Specification**

TOR1AIP1 Antibody - Product Information

Application	WB
Primary Accession	Q5JTV8
Reactivity	Human
Host	Rabbit
Clonality	Polyclonal
Calculated MW	66,43 KDa
Antigen Region	450-478

TOR1AIP1 Antibody - Additional Information**Gene ID** 26092**Other Names**

Torsin-1A-interacting protein 1, Lamin-associated protein 1B, LAP1B, TOR1AIP1, LAP1

Dilution

WB~~ 1:1000

FormatRabbit IgG in phosphate buffered saline (without Mg²⁺ and Ca²⁺), pH 7.4, 150mM NaCl, 0.09% (W/V) sodium azide and 50% glycerol.**Storage Conditions**

-20°C

TOR1AIP1 Antibody - Protein Information**Name** TOR1AIP1**Synonyms** LAP1**Function**

Required for nuclear membrane integrity. Induces TOR1A and TOR1B ATPase activity and is required for their location on the nuclear membrane. Binds to A- and B-type lamins. Possible role in membrane attachment and assembly of the nuclear lamina.

Cellular Location

Nucleus inner membrane; Single-pass membrane protein

Tissue Location

Expressed in muscle, liver and kidney. [Isoform 4]: Expressed at higher levels than isoform 1 in lung, kidney and spleen (at protein level). Expressed at lower levels than isoform 1 in liver, brain

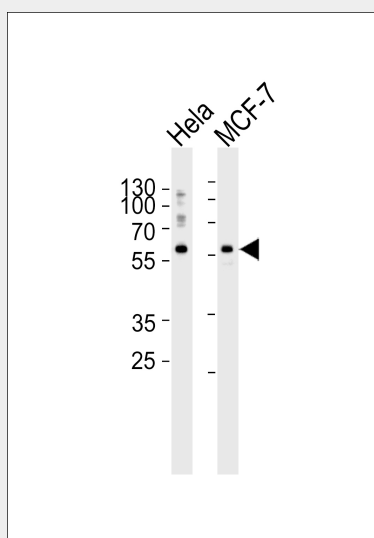
and heart (at protein level). Similar levels of isoforms 1 and 4 are observed in ovary, testis and pancreas (at protein level).

TOR1AIP1 Antibody - Protocols

Provided below are standard protocols that you may find useful for product applications.

- [Western Blot](#)
- [Blocking Peptides](#)
- [Dot Blot](#)
- [Immunohistochemistry](#)
- [Immunofluorescence](#)
- [Immunoprecipitation](#)
- [Flow Cytometry](#)
- [Cell Culture](#)

TOR1AIP1 Antibody - Images



Western blot analysis of lysates from HeLa, MCF-7 cell line (from left to right), using TOR1AIP1 Antibody (AP50777). AP50777 was diluted at 1:1000 at each lane. A goat anti-rabbit IgG H&L (HRP) at 1:5000 dilution was used as the secondary antibody. Lysates at 35 µg per lane.

TOR1AIP1 Antibody - Background

Binds to A- and B-type lamins. Possible role in membrane attachment and assembly of the nuclear lamina (By similarity).

TOR1AIP1 Antibody - References

Ota T., et al. Nat. Genet. 36:40-45(2004).
Gregory S.G., et al. Nature 441:315-321(2006).
Bechtel S., et al. BMC Genomics 8:399-399(2007).
Kondo Y., et al. Biochem. Biophys. Res. Commun. 294:770-778(2002).
Goodchild R.E., et al. J. Cell Biol. 168:855-862(2005).