

**TEAD2 Antibody**  
**Purified Rabbit Polyclonal Antibody (Pab)**  
**Catalog # AP50779****Specification**

---

**TEAD2 Antibody - Product Information**

Application	WB, IF, IHC
Primary Accession	<a href="#">Q15562</a>
Reactivity	Human, Mouse
Host	Rabbit
Clonality	Polyclonal
Calculated MW	49,50,35 KDa
Antigen Region	112-139

**TEAD2 Antibody - Additional Information****Gene ID** 8463**Other Names**

Transcriptional enhancer factor TEF-4, TEA domain family member 2, TEAD-2, TEAD2, TEF4

**Dilution**

WB~~ 1:1000

IF~~1:100

IHC~~1:50-100

**Format**Rabbit IgG in phosphate buffered saline (without Mg<sup>2+</sup> and Ca<sup>2+</sup>), pH 7.4, 150mM NaCl, 0.09% (W/V) sodium azide and 50% glycerol.**Storage Conditions**

-20°C

**TEAD2 Antibody - Protein Information****Name** TEAD2**Synonyms** TEF4**Function**

Transcription factor which plays a key role in the Hippo signaling pathway, a pathway involved in organ size control and tumor suppression by restricting proliferation and promoting apoptosis. The core of this pathway is composed of a kinase cascade wherein MST1/MST2, in complex with its regulatory protein SAV1, phosphorylates and activates LATS1/2 in complex with its regulatory protein MOB1, which in turn phosphorylates and inactivates YAP1 oncoprotein and WWTR1/TAZ. Acts by mediating gene expression of YAP1 and WWTR1/TAZ, thereby regulating cell proliferation, migration and epithelial mesenchymal transition (EMT) induction. Binds to the SPH and GT-IIC 'enhancers' (5'-GTGGAATGT-3'). May be involved in the gene regulation of neural development.

Binds to the M-CAT motif.

#### Cellular Location

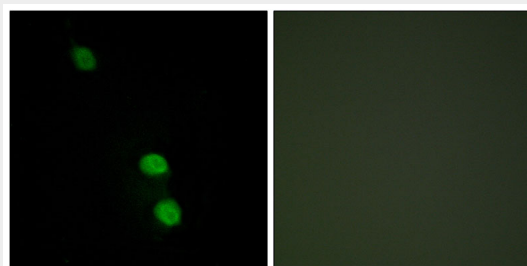
Nucleus.

#### TEAD2 Antibody - Protocols

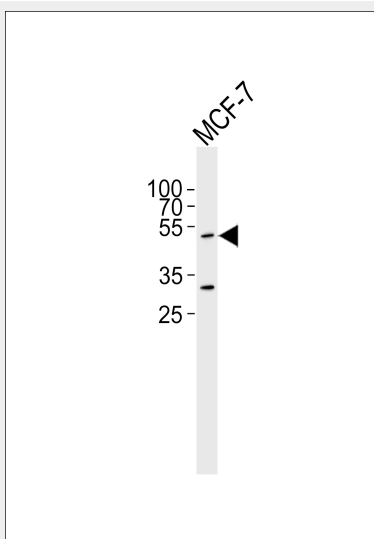
Provided below are standard protocols that you may find useful for product applications.

- [Western Blot](#)
- [Blocking Peptides](#)
- [Dot Blot](#)
- [Immunohistochemistry](#)
- [Immunofluorescence](#)
- [Immunoprecipitation](#)
- [Flow Cytometry](#)
- [Cell Culture](#)

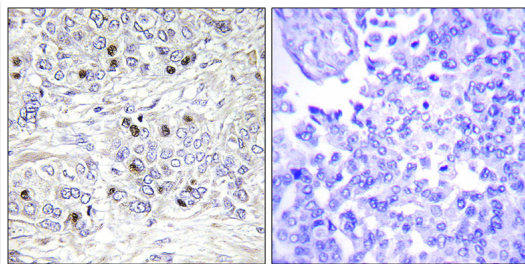
#### TEAD2 Antibody - Images



Immunofluorescence analysis of HepG2 cells, using TEAD2 antibody.



Western blot analysis of lysate from MCF-7 cell line, using TEAD2 Antibody (AP50779). AP50779 was diluted at 1:1000. A goat anti-rabbit IgG H&L (HRP) at 1:5000 dilution was used as the secondary antibody. Lysate at 35 µg.



Immunohistochemistry analysis of paraffin-embedded human breast carcinoma tissue, using TEAD2 antibody.

#### **TEAD2 Antibody - Background**

Transcription factor which plays a key role in the Hippo signaling pathway, a pathway involved in organ size control and tumor suppression by restricting proliferation and promoting apoptosis. The core of this pathway is composed of a kinase cascade wherein MST1/MST2, in complex with its regulatory protein SAV1, phosphorylates and activates LATS1/2 in complex with its regulatory protein MOB1, which in turn phosphorylates and inactivates YAP1 oncoprotein and WWTR1/TAZ. Acts by mediating gene expression of YAP1 and WWTR1/TAZ, thereby regulating cell proliferation, migration and epithelial mesenchymal transition (EMT) induction. Binds to the SPH and GT-IIC 'enhancers' (5'- GTGGAATGT-3'). May be involved in the gene regulation of neural development. Binds to the M-CAT motif.

#### **TEAD2 Antibody - References**

Ota T., et al. Nat. Genet. 36:40-45(2004).  
Grimwood J., et al. Nature 428:529-535(2004).  
Mural R.J., et al. Submitted (JUL-2005) to the EMBL/GenBank/DDBJ databases.  
Jacquemin P., et al. J. Biol. Chem. 271:21775-21785(1996).  
Zhao B., et al. Genes Dev. 22:1962-1971(2008).