

**Anti-JAZF1 antibody**  
**Purified Rabbit Polyclonal Antibody (Pab)**  
**Catalog # AP50814****Specification**

---

**Anti-JAZF1 antibody - Product Information**

Application	IHC-P, IHC-F, IF, ICC, E
Primary Accession	<a href="#">Q86VZ6</a>
Reactivity	Human
Host	Rabbit
Clonality	polyclonal
Calculated MW	H=27 KDa
Antigen Region	31-130/243 human

**Anti-JAZF1 antibody - Additional Information****Gene ID** 221895**Other Names**

Juxtaposed with another zinc finger protein 1, TAK1-interacting protein 27, Zinc finger protein 802, JAZF1, TIP27, ZNF802

**Dilution**

IHC-P ~ ~ N/A  
IHC-F ~ ~ N/A  
IF ~ ~ 1:50 ~ 200  
ICC ~ ~ N/A  
E ~ ~ N/A

**Format**

0.01M TBS(pH7.4), 0.09% (W/V) sodium azide and 50% Glyce

**Storage**

Store at -20 °C for one year. Avoid repeated freeze/thaw cycles. When reconstituted in sterile pH 7.4 0.01M PBS or diluent of antibody the antibody is stable for at least two weeks at 2-4 °C.

**Anti-JAZF1 antibody - Protein Information****Name** JAZF1 ([HGNC:28917](#))**Synonyms** TIP27, ZNF802**Function**

Acts as a transcriptional corepressor of orphan nuclear receptor NR2C2 (PubMed:<a href="http://www.uniprot.org/citations/15302918" target="\_blank">15302918</a>). Inhibits expression of the gluconeogenesis enzyme PCK2 through inhibition of NR2C2 activity (By similarity). Also involved in transcriptional activation of NAMPT by promoting expression of PPARA and PPARD (By similarity). Plays a role in lipid metabolism by suppressing lipogenesis, increasing lipolysis and decreasing lipid accumulation in adipose tissue (By similarity). Plays a role in glucose

homeostasis by improving glucose metabolism and insulin sensitivity (By similarity).

#### **Cellular Location**

Nucleus.

#### **Tissue Location**

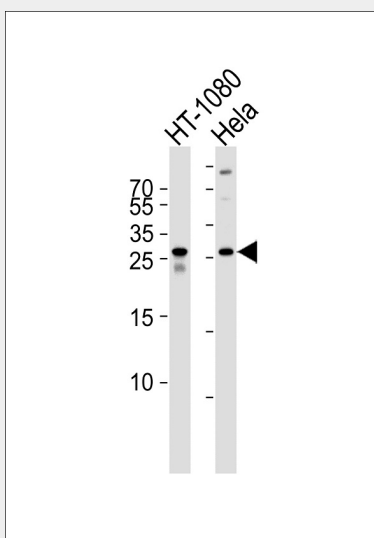
Highest expression in testis with moderate levels in colon, placenta, prostate and ovary and low levels in brain, spleen, liver and small intestine.

### **Anti-JAZF1 antibody - Protocols**

Provided below are standard protocols that you may find useful for product applications.

- [Western Blot](#)
- [Blocking Peptides](#)
- [Dot Blot](#)
- [Immunohistochemistry](#)
- [Immunofluorescence](#)
- [Immunoprecipitation](#)
- [Flow Cytometry](#)
- [Cell Culture](#)

### **Anti-JAZF1 antibody - Images**



Western blot analysis of lysates from HT-1080, HeLa cell line (from left to right), using Anti-JAZF1 antibody. This antibody was diluted at 1:1000 at each lane. A goat anti-rabbit IgG H&L(HRP) at 1:5000 dilution was used as the secondary antibody. Lysates at 35ug per lane.

### **Anti-JAZF1 antibody - Background**

Potential transcription factor.