

SERPING1 Antibody
Purified Rabbit Polyclonal Antibody (Pab)
Catalog # AP50849**Specification**

SERPING1 Antibody - Product Information

Application	WB, IHC
Primary Accession	P05155
Reactivity	Human
Host	Rabbit
Clonality	Polyclonal
Calculated MW	55(epitomics100) KDa
Antigen Region	351-379

SERPING1 Antibody - Additional Information**Gene ID** 710**Other Names**

Plasma protease C1 inhibitor, C1 Inh, C1Inh, C1 esterase inhibitor, C1-inhibiting factor, Serpin G1, SERPING1, C1IN, C1NH

Dilution

WB~~ 1:1000

IHC~~1:50~100

FormatRabbit IgG in phosphate buffered saline (without Mg²⁺ and Ca²⁺), pH 7.4, 150mM NaCl, 0.09% (W/V) sodium azide and 50% glycerol.**Storage Conditions**

-20°C

SERPING1 Antibody - Protein Information**Name** SERPING1**Synonyms** C1IN, C1NH**Function**

Activation of the C1 complex is under control of the C1- inhibitor. It forms a proteolytically inactive stoichiometric complex with the C1r or C1s proteases. May play a potentially crucial role in regulating important physiological pathways including complement activation, blood coagulation, fibrinolysis and the generation of kinins. Very efficient inhibitor of FXIIa. Inhibits chymotrypsin and kallikrein.

Cellular Location

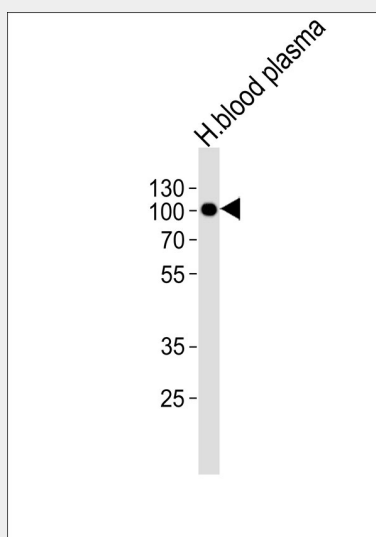
Secreted.

SERPING1 Antibody - Protocols

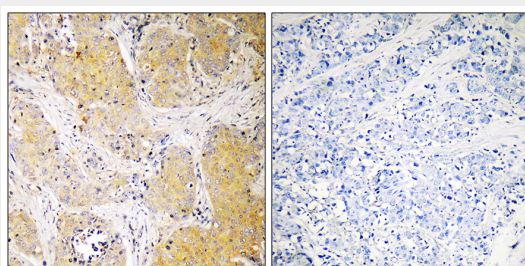
Provided below are standard protocols that you may find useful for product applications.

- [Western Blot](#)
- [Blocking Peptides](#)
- [Dot Blot](#)
- [Immunohistochemistry](#)
- [Immunofluorescence](#)
- [Immunoprecipitation](#)
- [Flow Cytometry](#)
- [Cell Culture](#)

SERPING1 Antibody - Images



Western blot analysis of lysate from human blood plasma tissue lysate, using SERPING1 Antibody, was diluted at 1:1000. A goat anti-rabbit IgG H&L(HRP) at 1:5000 dilution was used as the secondary antibody. Lysate at 35ug.



Immunohistochemistry analysis of paraffin-embedded human breast carcinoma tissue using SERPING1 antibody.

SERPING1 Antibody - Background

Activation of the C1 complex is under control of the C1- inhibitor. It forms a proteolytically inactive stoichiometric complex with the C1r or C1s proteases. May play a potentially crucial role in regulating important physiological pathways including complement activation, blood coagulation, fibrinolysis and the generation of kinins. Very efficient inhibitor of FXIIa. Inhibits chymotrypsin and

kallikrein.

SERPING1 Antibody - References

Que B.G.,et al.Biochem. Biophys. Res. Commun. 137:620-625(1986).
Bock S.C.,et al.Biochemistry 25:4292-4301(1986).
Carter P.E.,et al.Eur. J. Biochem. 173:163-169(1988).
Carter P.E.,et al.Eur. J. Biochem. 197:301-308(1991).
Heus J.,et al.Submitted (OCT-2001) to the EMBL/GenBank/DDBJ databases.