

Tubulin Beta Antibody
Purified Rabbit Polyclonal Antibody (Pab)
Catalog # AP50855**Specification**

Tubulin Beta Antibody - Product Information

Application	WB, IHC-P, IHC-F, IF, E
Primary Accession	P07437
Reactivity	Human, Mouse, Rat, Rabbit
Host	Rabbit
Clonality	Polyclonal
Calculated MW	50 KDa
Antigen Region	61-160/444

Tubulin Beta Antibody - Additional Information**Gene ID** 203068**Other Names**

Tubulin beta chain, Tubulin beta-5 chain, TUBB, TUBB5

Dilution

WB~1:100~1:500<br \>IHC-P~1:100~1:500<br \>IHC-F~N/A<br \>IF~1:100~1:200<br \>E~N/A

Format

0.01M TBS(pH7.4), 0.09% (W/V) sodium azide and 50% Glyce

Storage

Store at -20 °C for one year. Avoid repeated freeze/thaw cycles. When reconstituted in sterile pH 7.4 0.01M PBS or diluent of antibody the antibody is stable for at least two weeks at 2-4 °C.

Tubulin Beta Antibody - Protein Information**Name** TUBB**Synonyms** TUBB5**Function**

Tubulin is the major constituent of microtubules, a cylinder consisting of laterally associated linear protofilaments composed of alpha- and beta-tubulin heterodimers. Microtubules grow by the addition of GTP-tubulin dimers to the microtubule end, where a stabilizing cap forms. Below the cap, tubulin dimers are in GDP-bound state, owing to GTPase activity of alpha-tubulin.

Cellular Location

Cytoplasm, cytoskeleton

Tissue Location

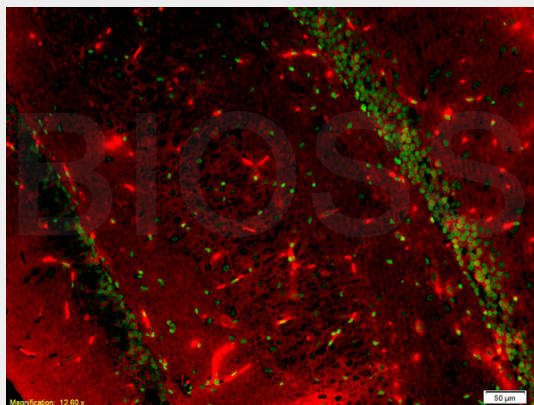
Ubiquitously expressed with highest levels in spleen, thymus and immature brain.

Tubulin Beta Antibody - Protocols

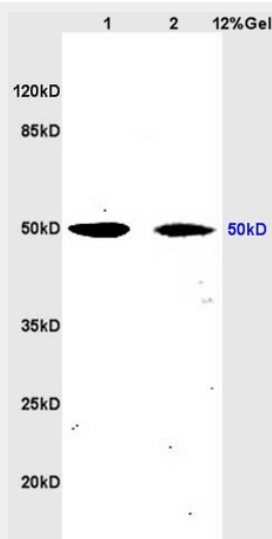
Provided below are standard protocols that you may find useful for product applications.

- [Western Blot](#)
- [Blocking Peptides](#)
- [Dot Blot](#)
- [Immunohistochemistry](#)
- [Immunofluorescence](#)
- [Immunoprecipitation](#)
- [Flow Cytometry](#)
- [Cell Culture](#)

Tubulin Beta Antibody - Images

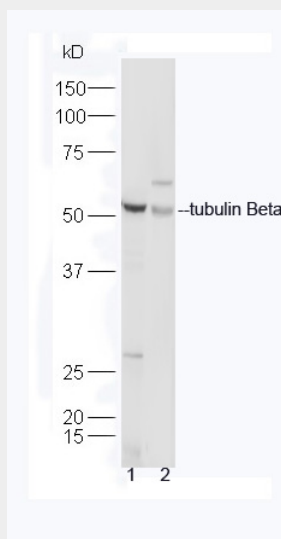


Formalin-fixed and paraffin embedded rat brain tissue labeled with Anti-BrdU(A7) Monoclonal Antibody, FITC Conjugated (bsm-0917M-FITC) at 1:200 for 40 minutes at 37°C followed by labeling Rabbit Anti-Tubulin Beta, Cy3 conjugated(AP50855-Cy3) 1:200, 40 minutes at 37°C

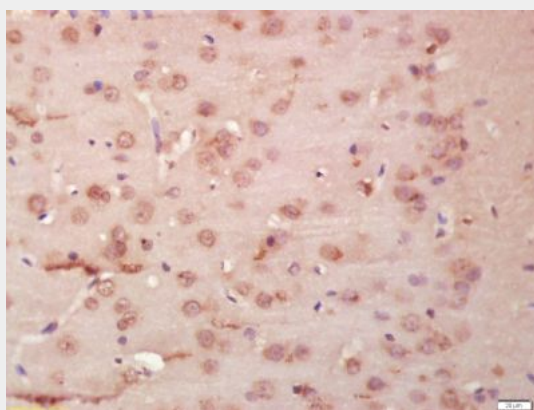


Lane 1: Mouse heart lysates; Lane 2: Human MCF7 cell lysates probed with Rabbit Anti-Tubulin Beta Polyclonal Antibody, Unconjugated (AP50855) at 1:300 overnight at 4°C. Followed by a

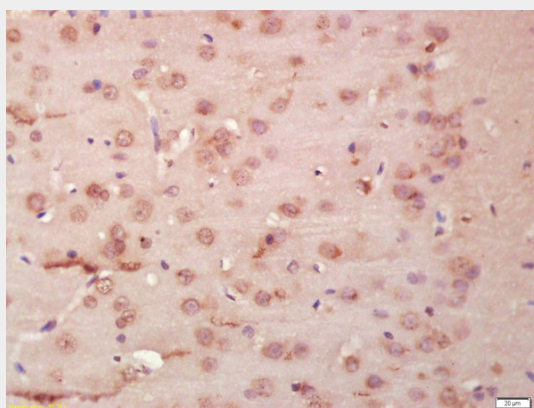
conjugated secondary antibody at 1:5000 for 90 min at 37°C.



Lane 1: Mouse heart lysates; Lane 2: Human MCF7 cell lysates probed with Rabbit Anti-Tubulin Beta Polyclonal Antibody, Unconjugated AP50855 at 1:300 overnight at 4°C. Followed by a conjugated secondary antibody at 1:5000 for 90 min at 37°C.



Tissue/cell: rat brain tissue; 4% Paraformaldehyde-fixed and paraffin-embedded; Antigen retrieval: citrate buffer (0.01M, pH 6.0), Boiling bathing for 15min; Block endogenous peroxidase by 3% Hydrogen peroxide for 30min; Blocking buffer at 37°C for 20 min; Incubation: Anti-tubulin Beta Polyclonal Antibody, Unconjugated 1:200, overnight at 4°C, followed by conjugation to the secondary antibody and DAB staining



Formalin-fixed and paraffin embedded rat brain labeled with Anti-tubulin Beta Polyclonal Antibody, Unconjugated (AP50855) at 1:200 followed by conjugation to the secondary antibody

and DAB staining

Tubulin Beta Antibody - Background

Tubulin is the major constituent of microtubules. It binds two moles of GTP, one at an exchangeable site on the beta chain and one at a non-exchangeable site on the alpha chain.

Tubulin Beta Antibody - References

Lee M.G.-S.,et al.Cell 33:477-487(1983).
Hall J.L.,et al.Mol. Cell. Biol. 3:854-862(1983).
Crabtree D.V.,et al.Bioorg. Med. Chem. 9:1967-1976(2001).
Yu W.,et al.Submitted (JUN-1998) to the EMBL/GenBank/DDBJ databases.
Shiina S.,et al.Submitted (SEP-1999) to the EMBL/GenBank/DDBJ databases.

Tubulin Beta Antibody - Citations

- [Single-walled carbon-nanohorns improve biocompatibility over nanotubes by triggering less protein-initiated pyroptosis and apoptosis in macrophages.](#)