

Anti-B7-DC antibody
Purified Rabbit Polyclonal Antibody (Pab)
Catalog # AP50869**Specification****Anti-B7-DC antibody - Product Information**

Application	ICC, E
Primary Accession	Q9BQ51
Reactivity	Human, Mouse, Rat
Host	Rabbit
Clonality	Polyclonal
Calculated MW	29 KDa
Physical State	Liquid
Immunogen	KLH conjugated synthetic peptide derived from human PDCD1LG2
Epitope Specificity	41-150/273
Isotype	IgG
Purity	
affinity purified by Protein A	
Buffer	0.01M TBS (pH7.4) with 1% BSA, 0.02% Proclin300 and 50% Glycerol.
SUBCELLULAR LOCATION	Isoform 3: Secreted (Probable). Isoform 2: Endomembrane system; Single-pass type I membrane protein. Isoform 1: Cell membrane; Single-pass type I membrane protein.
SIMILARITY	Belongs to the immunoglobulin superfamily. BTN/MOG family. Contains 1 Ig-like C2-type (immunoglobulin-like) domain. Contains 1 Ig-like V-type (immunoglobulin-like) domain.
SUBUNIT	Interacts with PDCD1.
Post-translational modifications	Phosphorylated by AKT1. Phosphorylation relieves inhibitory function on mTORC1.
Important Note	This product as supplied is intended for research use only, not for use in human, therapeutic or diagnostic applications.

Background Descriptions

B7DC is a 33kDa member of the immunoglobulin receptor superfamily expressed on DC, liver and a small subset of macrophages as well as a few transformed cell lines. B7DC has been reported to be stimulatory on dendritic cells when cross linked and to inhibit T cell activation upon engaging the PD1 receptor. B7DC has also been reported to bind to an alternative receptor and to mediate T cell activation through non PD1 mediated interactions.

Antigen Region	41-150/273
----------------	------------

Anti-B7-DC antibody - Additional Information**Gene ID 80380**

Other Names

Programmed cell death 1 ligand 2, PD-1 ligand 2, PD-L2, PDCD1 ligand 2, Programmed death ligand 2, Butyrophilin B7-DC, B7-DC, CD273, PDCD1LG2, B7DC, CD273, PDCD1L2, PDL2

Target/Specificity

Highly expressed in heart, placenta, pancreas, lung and liver and weakly expressed in spleen, lymph nodes and thymus.

Dilution

ICC~N/A
E~N/A

Format

0.01M TBS(pH7.4), 0.09% (W/V) sodium azide and 50% Glyce

Storage

Store at -20 °C for one year. Avoid repeated freeze/thaw cycles. When reconstituted in sterile pH 7.4 0.01M PBS or diluent of antibody the antibody is stable for at least two weeks at 2-4 °C.

Anti-B7-DC antibody - Protein Information

Name PDCD1LG2

Synonyms B7DC, CD273, PDCD1L2, PDL2

Function

Involved in the costimulatory signal, essential for T-cell proliferation and IFNG production in a PDCD1-independent manner. Interaction with PDCD1 inhibits T-cell proliferation by blocking cell cycle progression and cytokine production (By similarity).

Cellular Location

[Isoform 3]: Secreted [Isoform 1]: Cell membrane; Single-pass type I membrane protein {ECO:0000250|UniProtKB:Q9WUL5, ECO:0000305|PubMed:15340161}

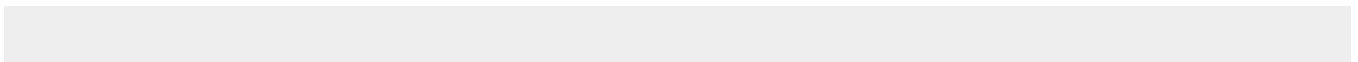
Tissue Location

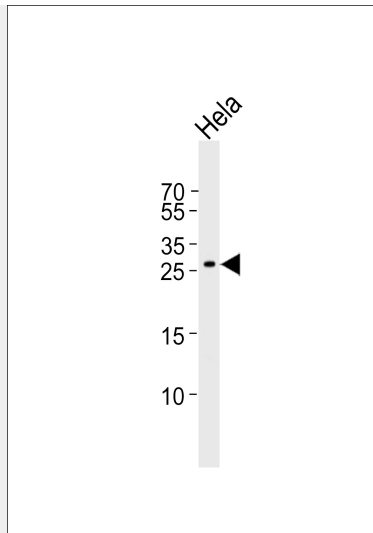
Highly expressed in heart, placenta, pancreas, lung and liver and weakly expressed in spleen, lymph nodes and thymus

Anti-B7-DC antibody - Protocols

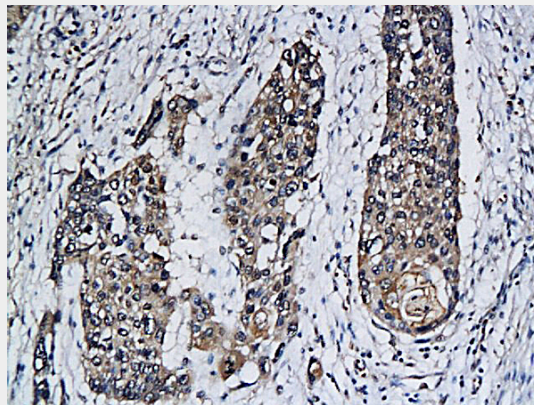
Provided below are standard protocols that you may find useful for product applications.

- [Western Blot](#)
- [Blocking Peptides](#)
- [Dot Blot](#)
- [Immunohistochemistry](#)
- [Immunofluorescence](#)
- [Immunoprecipitation](#)
- [Flow Cytometry](#)
- [Cell Culture](#)

Anti-B7-DC antibody - Images



Western blot analysis of lysate from HeLa cell line, using Anti-B7-DC antibody (AP50869). AP50869 was diluted at 1:1000. A goat anti-rabbit IgG H&L(HRP) at 1:10000 dilution was used as the secondary antibody. Lysate at 35ug.



Formalin-fixed and paraffin embedded human cervical cancer labeled with Anti-B7-DC/CD273/PDL2, Unconjugated (AP50869) followed by conjugation to the secondary antibody

Anti-B7-DC antibody - Background

B7DC is a 33kDa member of the immunoglobulin receptor superfamily expressed on DC, liver and a small subset of macrophages as well as a few transformed cell lines. B7DC has been reported to be stimulatory on dendritic cells when cross linked and to inhibit T cell activation upon engaging the PD1 receptor. B7DC has also been reported to bind to an alternative receptor and to mediate T cell activation through non PD1 mediated interactions

Anti-B7-DC antibody - References

Tseng S.-Y., et al. J. Exp. Med. 193:839-846(2001).
Latchman Y., et al. Nat. Immunol. 2:261-268(2001).
He X.-H., et al. Acta Biochim. Biophys. Sin. 36:284-289(2004).
Humphray S.J., et al. Nature 429:369-374(2004).
Zhang Z., et al. Protein Sci. 13:2819-2824(2004).