

CISH Antibody
Purified Rabbit Polyclonal Antibody (Pab)
Catalog # AP50938**Specification**

CISH Antibody - Product Information

Application	WB
Primary Accession	Q9NSE2
Reactivity	Human
Host	Rabbit
Clonality	Polyclonal
Calculated MW	29,31 KDa
Antigen Region	145-194

CISH Antibody - Additional Information**Gene ID** 1154**Other Names**

Cytokine-inducible SH2-containing protein, CIS, CIS-1, Protein G18, Suppressor of cytokine signaling, SOCS, CISH, G18

Target/Specificity

KLH-conjugated synthetic peptide encompassing a sequence within the center region of human G18. The exact sequence is proprietary.

Dilution

WB~~ 1:500

Format

Rabbit IgG in phosphate buffered saline , pH 7.4, 150mM NaCl, 0.09% (W/V) sodium azide and 53% glycerol

Storage

Store at -20 °C.Stable for 12 months from date of receipt

CISH Antibody - Protein Information**Name** CISH**Synonyms** G18**Function**

SOCS family proteins form part of a classical negative feedback system that regulates cytokine signal transduction. CIS is involved in the negative regulation of cytokines that signal through the JAK-STAT5 pathway such as erythropoietin, prolactin and interleukin 3 (IL3) receptor. Inhibits STAT5 trans-activation by suppressing its tyrosine phosphorylation. May be a substrate-recognition component of a SCF-like ECS (Elongin BC-CUL2/5-SOCS-box protein) E3 ubiquitin-protein ligase

complex which mediates the ubiquitination and subsequent proteasomal degradation of target proteins (By similarity).

Tissue Location

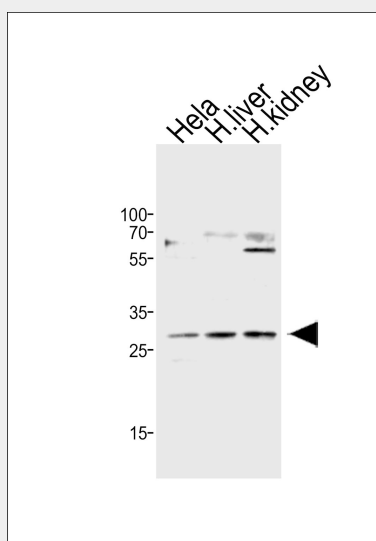
Expressed in various epithelial tissues. Abundantly expressed in liver and kidney, and to a lesser extent in lung. The tissue distribution of isoforms 1 and 1B is distinct

CISH Antibody - Protocols

Provided below are standard protocols that you may find useful for product applications.

- [Western Blot](#)
- [Blocking Peptides](#)
- [Dot Blot](#)
- [Immunohistochemistry](#)
- [Immunofluorescence](#)
- [Immunoprecipitation](#)
- [Flow Cytometry](#)
- [Cell Culture](#)

CISH Antibody - Images



Western blot analysis of lysates from HeLa cell line, human liver, human kidney tissue lysate (from left to right), using CISH Antibody(A1-1587). A1-1587 was diluted at 1:500 at each lane. A goat anti-rabbit IgG H&L(HRP) at 1:10000 dilution was used as the secondary antibody. Lysates at 20ug per lane.

CISH Antibody - Background

SOCS family proteins form part of a classical negative feedback system that regulates cytokine signal transduction. CIS is involved in the negative regulation of cytokines that signal through the JAK-STAT5 pathway such as erythropoietin, prolactin and interleukin 3 (IL3) receptor. Inhibits STAT5 trans-activation by suppressing its tyrosine phosphorylation. May be a substrate- recognition component of a SCF-like ECS (Elongin BC-CUL2/5-SOCS- box protein) E3 ubiquitin-protein ligase complex which mediates the ubiquitination and subsequent proteasomal degradation of target proteins (By similarity).

CISH Antibody - References

Uchida K.,et al.Cytogenet. Cell Genet. 78:209-212(1997).
Jiang C.,et al.DNA Seq. 11:149-154(2000).
Wei M.-H.,et al.Submitted (MAR-2000) to the EMBL/GenBank/DDBJ databases.
Yousefi S.,et al.Biochem. Biophys. Res. Commun. 277:401-409(2000).
Ota T.,et al.Nat. Genet. 36:40-45(2004).