

**IL37 Antibody**  
**Purified Rabbit Polyclonal Antibody (Pab)**  
**Catalog # AP50940****Specification**

---

**IL37 Antibody - Product Information**

Application	WB
Primary Accession	<a href="#">O9NZH6</a>
Reactivity	Human
Host	Rabbit
Clonality	Polyclonal
Calculated MW	24,22,20,17 KDa
Antigen Region	99-148

**IL37 Antibody - Additional Information****Gene ID** 27178**Other Names**

Interleukin-37, FIL1 zeta, IL-1X, Interleukin-1 family member 7, IL-1F7, Interleukin-1 homolog 4, IL-1H, IL-1H4, Interleukin-1 zeta, IL-1 zeta, Interleukin-1-related protein, IL-1RP1, Interleukin-23, IL-37, IL37, FIL1Z, IL1F7, IL1H4, IL1RP1

**Dilution**

WB~~ 1:500

**Format**

Rabbit IgG in phosphate buffered saline , pH 7.4, 150mM NaCl, 0.09% (W/V) sodium azide and 55% glycerol

**Storage**

Store at -20 °C.Stable for 12 months from date of receipt

**IL37 Antibody - Protein Information****Name** IL37 ([HGNC:15563](#))**Function**

Immune regulatory cytokine that acts as a suppressor of innate inflammatory and immune responses involved in curbing excessive inflammation. Signaling can occur via two mechanisms, intracellularly through nuclear translocation with SMAD3 and extracellularly after secretion and binding to its receptor composed of IL18R1 and IL18RAP. Suppresses, or reduces, pro-inflammatory cytokine production, including IL1A and IL6, as well as CCL12, CSF1, CSF2, CXCL13, IL1B, IL23A and IL1RN, but spares anti-inflammatory cytokines. Inhibits dendritic cell activation.

**Cellular Location**

Cytoplasm, cytosol. Nucleus. Secreted Note=Stimulation with IL1B leads to colocalization with

SMAD3 mostly in perinuclear regions (PubMed:20935647, PubMed:33674380). Only the CASP1-cleaved mature form translocates into the nucleus upon LPS stimulation (PubMed:18390730). The secretion is dependent on protein unfolding and facilitated by the cargo receptor TMED10; it results in protein translocation from the cytoplasm into the ERGIC (endoplasmic reticulum- Golgi intermediate compartment) followed by vesicle entry and secretion (PubMed:32272059, PubMed:33674380).

#### Tissue Location

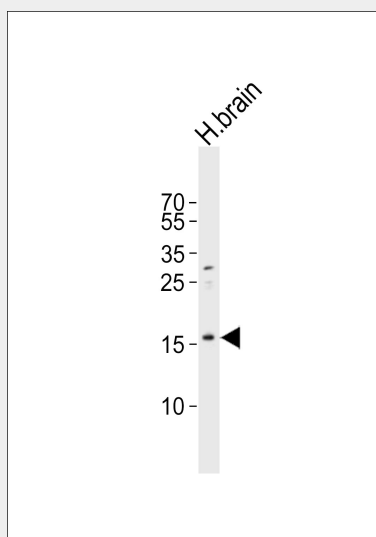
In general, low constitutive expression, if any, in healthy tissues; high expression in inflammatory counterparts, including in synovial tissues from individuals with active rheumatoid arthritis. Isoform A, isoform B and isoform C are expressed in testis, colon, placenta, lung and lymph node. Isoform D and isoform E were found only in testis and bone marrow. Whereas only isoform A is found in brain, only isoform B in kidney and only isoform C in heart

#### IL37 Antibody - Protocols

Provided below are standard protocols that you may find useful for product applications.

- [Western Blot](#)
- [Blocking Peptides](#)
- [Dot Blot](#)
- [Immunohistochemistry](#)
- [Immunofluorescence](#)
- [Immunoprecipitation](#)
- [Flow Cytometry](#)
- [Cell Culture](#)

#### IL37 Antibody - Images



Western blot analysis of lysate from human brain tissue lysate, using IL37 Antibody(A1-1822).A1-1822 was diluted at 1:500. A goat anti-rabbit IgG H&L(HRP) at 1:10000 dilution was used as the secondary antibody.Lysate at 20ug.

#### IL37 Antibody - Background

Suppressor of innate inflammatory and immune responses involved in curbing excessive inflammation. This function requires SMAD3. Suppresses, or reduces, proinflammatory cytokine

production, including IL1A and IL6, as well as CCL12, CSF1, CSF2, CXCL13, IL1B, IL23A and IL1RN, but spares anti-inflammatory cytokines. Inhibits dendritic cell activation.

### **IL37 Antibody - References**

Kumar S.,et al.J. Biol. Chem. 275:10308-10314(2000).

Manoj P.P.,et al.Submitted (JUL-1999) to the EMBL/GenBank/DDBJ databases.

Pan G.,et al.Cytokine 13:1-7(2001).

Smith D.E.,et al.J. Biol. Chem. 275:1169-1175(2000).

Taylor S.L.,et al.Genomics 79:726-733(2002).