

AATF Antibody
Purified Rabbit Polyclonal Antibody (Pab)
Catalog # AP50944**Specification**

AATF Antibody - Product Information

Application	WB
Primary Accession	O9NY61
Reactivity	Human
Host	Rabbit
Clonality	Polyclonal
Calculated MW	63 KDa
Antigen Region	21 - 80

AATF Antibody - Additional Information**Gene ID** 26574**Other Names**

Protein AATF, Apoptosis-antagonizing transcription factor, Rb-binding protein Che-1, AATF, CHE1, DED

Target/Specificity

KLH-conjugated synthetic peptide encompassing a sequence within the N-term region of human AATF. The exact sequence is proprietary.

Dilution

WB~~ 1:1000

Format

0.01M PBS, pH 7.2, 0.09% (W/V) Sodium azide, Glycerol 50%

Storage

Store at -20 °C. Stable for 12 months from date of receipt

AATF Antibody - Protein Information**Name** AATF ([HGNC:19235](#))**Synonyms** CHE1, DED**Function**

Part of the small subunit (SSU) processome, first precursor of the small eukaryotic ribosomal subunit. During the assembly of the SSU processome in the nucleolus, many ribosome biogenesis factors, an RNA chaperone and ribosomal proteins associate with the nascent pre- rRNA and work in concert to generate RNA folding, modifications, rearrangements and cleavage as well as targeted degradation of pre- ribosomal RNA by the RNA exosome (PubMed:34516797). May function

as a general inhibitor of the histone deacetylase HDAC1. Binding to the pocket region of RB1 may displace HDAC1 from RB1/E2F complexes, leading to activation of E2F target genes and cell cycle progression. Conversely, displacement of HDAC1 from SP1 bound to the CDKN1A promoter leads to increased expression of this CDK inhibitor and blocks cell cycle progression. Also antagonizes PAWR mediated induction of aberrant amyloid peptide production in Alzheimer disease (presenile and senile dementia), although the molecular basis for this phenomenon has not been described to date.

Cellular Location

Nucleus, nucleolus

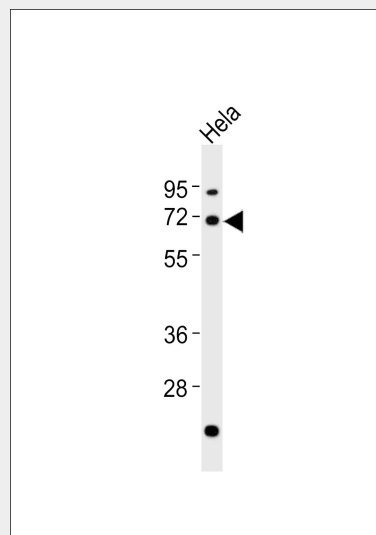
Tissue Location

Ubiquitously expressed. Expressed at high levels in brain, heart, kidney, placenta and thymus

AATF Antibody - Protocols

Provided below are standard protocols that you may find useful for product applications.

- [Western Blot](#)
- [Blocking Peptides](#)
- [Dot Blot](#)
- [Immunohistochemistry](#)
- [Immunofluorescence](#)
- [Immunoprecipitation](#)
- [Flow Cytometry](#)
- [Cell Culture](#)

AATF Antibody - Images

Anti-AATF Antibody at 1:1000 dilution + HeLa whole cell lysates Lysates/proteins at 20 µg per lane. Secondary Goat Anti-Rabbit IgG, (H+L), Peroxidase conjugated at 1/10000 dilution Predicted band size : 63 kDa Blocking/Dilution buffer: 5% NFDM/TBST.

AATF Antibody - Background

May function as a general inhibitor of the histone deacetylase HDAC1. Binding to the pocket region of RB1 may displace HDAC1 from RB1/E2F complexes, leading to activation of E2F target genes and

cell cycle progression. Conversely, displacement of HDAC1 from SP1 bound to the CDKN1A promoter leads to increased expression of this CDK inhibitor and blocks cell cycle progression. Also antagonizes PAWR mediated induction of aberrant amyloid peptide production in Alzheimer disease (presenile and senile dementia), although the molecular basis for this phenomenon has not been described to date.

AATF Antibody - References

- Lindfors K.,et al.Biochem. Biophys. Res. Commun. 276:660-666(2000).
Fanciulli M.,et al.FASEB J. 14:904-912(2000).
Ota T.,et al.Nat. Genet. 36:40-45(2004).
Zody M.C.,et al.Nature 440:1045-1049(2006).
Mural R.J.,et al.Submitted (JUL-2005) to the EMBL/GenBank/DDBJ databases.