

**ABCG1 Antibody**  
**Purified Rabbit Polyclonal Antibody (Pab)**  
**Catalog # AP50949****Specification**

---

**ABCG1 Antibody - Product Information**

Application	WB
Primary Accession	<a href="#">P45844</a>
Reactivity	Human, Mouse, Rat
Host	Rabbit
Clonality	Polyclonal
Calculated MW	110 KDa
Antigen Region	571 - 630

**ABCG1 Antibody - Additional Information****Gene ID** 9619**Other Names**

ATP-binding cassette sub-family G member 1, ATP-binding cassette transporter 8, White protein homolog, ABCG1, ABC8, WHT1

**Target/Specificity**

KLH-conjugated synthetic peptide encompassing a sequence within the C-term region of human ABCG1. The exact sequence is proprietary.

**Dilution**

WB~~ 1:1000

**Format**

0.01M PBS, pH 7.2, 0.09% (W/V) Sodium azide, Glycerol 50%

**Storage**

Store at -20 °C. Stable for 12 months from date of receipt

**ABCG1 Antibody - Protein Information****Name** ABCG1 ([HGNC:73](#))**Synonyms** ABC8, WHT1**Function**

Catalyzes the efflux of phospholipids such as sphingomyelin, cholesterol and its oxygenated derivatives like 7beta- hydroxycholesterol and this transport is coupled to hydrolysis of ATP (PubMed:<a href="http://www.uniprot.org/citations/17408620" target="\_blank">17408620</a>, PubMed:<a href="http://www.uniprot.org/citations/24576892" target="\_blank">24576892</a>). The lipid efflux is ALB-dependent (PubMed:<a href="http://www.uniprot.org/citations/16702602" target="\_blank">16702602</a>). Is an active component of the macrophage lipid export

complex. Could also be involved in intracellular lipid transport processes. The role in cellular lipid homeostasis may not be limited to macrophages. Prevents cell death by transporting cytotoxic 7beta- hydroxycholesterol (PubMed:<a href="http://www.uniprot.org/citations/17408620" target="\_blank">17408620</a>).

#### Cellular Location

Endoplasmic reticulum membrane; Multi-pass membrane protein. Golgi apparatus membrane; Multi-pass membrane protein. Cell membrane Note=Predominantly localized in the intracellular compartments mainly associated with the endoplasmic reticulum (ER) and Golgi membranes

#### Tissue Location

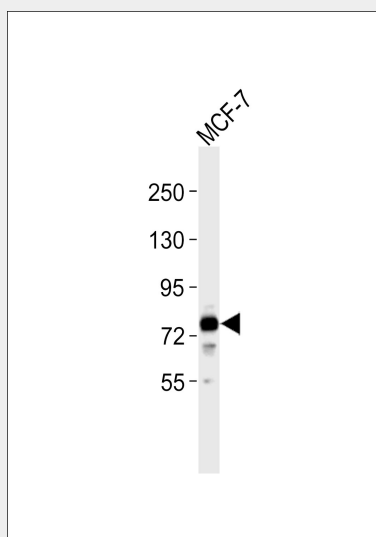
Expressed in several tissues. Expressed in macrophages; expression is increased in macrophages from patients with Tangier disease.

### ABCG1 Antibody - Protocols

Provided below are standard protocols that you may find useful for product applications.

- [Western Blot](#)
- [Blocking Peptides](#)
- [Dot Blot](#)
- [Immunohistochemistry](#)
- [Immunofluorescence](#)
- [Immunoprecipitation](#)
- [Flow Cytometry](#)
- [Cell Culture](#)

### ABCG1 Antibody - Images



Anti-ABCG1 Antibody at 1:1000 dilution + MCF-7 whole cell lysates. Lysates/proteins at 20 µg per lane. Secondary Goat Anti-Rabbit IgG, (H+L), Peroxidase conjugated at 1/10000 dilution. Predicted band size : 76 kDa. Blocking/Dilution buffer: 5% NFDM/TBST.

### ABCG1 Antibody - Background

Transporter involved in macrophage lipid homeostasis. Is an active component of the macrophage lipid export complex. Could also be involved in intracellular lipid transport processes. The role in

cellular lipid homeostasis may not be limited to macrophages.

### **ABCG1 Antibody - References**

Chen H.M.,et al.Am. J. Hum. Genet. 59:66-75(1996).  
Berry A.,et al.Genomics 68:22-29(2000).  
Porsch-Oezcueruemez M.,et al.J. Biol. Chem. 276:12427-12433(2001).  
Lorkowski S.,et al.Biochem. Biophys. Res. Commun. 280:121-131(2001).  
Kennedy M.A.,et al.J. Biol. Chem. 276:39438-39447(2001).

### **ABCG1 Antibody - Citations**

- [Murine Beta-Amyloid \(1-42\) Oligomers Disrupt Endothelial Barrier Integrity and VEGFR Signaling via Activating Astrocytes to Release Deleterious Soluble Factors](#)