

Adenylate Cyclase 5/6 Antibody
Purified Rabbit Polyclonal Antibody (Pab)
Catalog # AP50965

Specification

Adenylate Cyclase 5/6 Antibody - Product Information

Application	WB
Primary Accession	O95622
Reactivity	Human, Mouse, Rat
Host	Rabbit
Clonality	Polyclonal
Calculated MW	139 KDa
Antigen Region	1031 - 1090

Adenylate Cyclase 5/6 Antibody - Additional Information

Gene ID 111

Other Names

Adenylate cyclase type 5, ATP pyrophosphate-lyase 5, Adenylate cyclase type V, Adenylyl cyclase 5, ADCY5

Target/Specificity

KLH conjugated synthetic peptide derived from human Adenylate Cyclase 5/6

Dilution

WB~~ 1:1000

Format

0.01M PBS, pH 7.2, 0.09% (W/V) Sodium azide, Glycerol 50%

Storage

Store at -20 °C. Stable for 12 months from date of receipt

Adenylate Cyclase 5/6 Antibody - Protein Information

Name ADCY5

Function

Catalyzes the formation of the signaling molecule cAMP in response to G-protein signaling (PubMed: [15385642](http://www.uniprot.org/citations/15385642)), PubMed: [24700542](http://www.uniprot.org/citations/24700542), PubMed: [26206488](http://www.uniprot.org/citations/26206488)). Mediates signaling downstream of ADRB1 (PubMed: [24700542](http://www.uniprot.org/citations/24700542)). Regulates the increase of free cytosolic Ca(2+) in response to increased blood glucose levels and contributes to the regulation of Ca(2+)-dependent insulin secretion (PubMed: [24740569](http://www.uniprot.org/citations/24740569)).

Cellular Location

Cell membrane; Multi-pass membrane protein. Cell projection, cilium
{ECO:0000250|UniProtKB:P84309}

Tissue Location

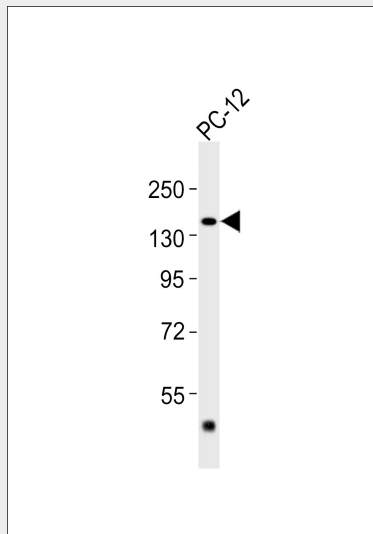
Detected in pancreas islets (at protein level). Expressed in the brain, with high expression in the corpus striatum (PubMed:26085604).

Adenylate Cyclase 5/6 Antibody - Protocols

Provided below are standard protocols that you may find useful for product applications.

- [Western Blot](#)
- [Blocking Peptides](#)
- [Dot Blot](#)
- [Immunohistochemistry](#)
- [Immunofluorescence](#)
- [Immunoprecipitation](#)
- [Flow Cytometry](#)
- [Cell Culture](#)

Adenylate Cyclase 5/6 Antibody - Images



Anti-Adenylate Cyclase 5/6 Antibody at 1:1000 dilution + PC-12 whole cell lysates Lysates/proteins at 20 µg per lane. Secondary Goat Anti-Rabbit IgG, (H+L), Peroxidase conjugated at 1/10000 dilution Predicted band size : 139 kDa Blocking/Dilution buffer: 5% NFDM/TBST.

Adenylate Cyclase 5/6 Antibody - Background

This is a membrane-bound, calcium-inhibitable adenylyl cyclase.

Adenylate Cyclase 5/6 Antibody - References

- Ota T., et al. Nat. Genet. 36:40-45(2004).
Muzny D.M., et al. Nature 440:1194-1198(2006).
Ludwig M.G., et al. J. Recept. Signal Transduct. 22:79-110(2002).
Raimundo S., et al. Clin. Chim. Acta 285:155-161(1999).

Ding Q., et al. Mol. Pharmacol. 66:921-928(2004).